



Solutions for Heavy Industry



MARKETS &
APPLICATIONS





BONFIGLIOLI SOLUTIONS FOR HEAVY INDUSTRY

Among Bonfiglioli product portfolio, a wide range of solutions is dedicated to heavy industry applications. By offering complete solutions (gearboxes-motors-inverters), we are able to satisfy all the market requirements in terms of robustness, quality and superior reliability.

Operating from the Bonfiglioli many subsidiaries around the world, our technical service is always available to support customers in selecting the most suitable type and size of product for the application at hand.



A ONE-STOP SHOP FOR ALL YOUR INDUSTRIAL APPLICATIONS

Every year, Bonfiglioli manufactures over 1.5 million products offering its customers fully integrated and solutions, ideal for a wide range of applications in over twenty industrial sectors.

With more than 60 years of experience, our extensive range of gearboxes, gearmotors, electric motors and inverters offers the opportunity to benefit from exceptional technical characteristics and superb performance in all industrial applications.

Our mechatronic solutions for industrial automation deliver the highest possible level of precision, efficiency and energy optimization. These solutions include precision planetary gearboxes, servomotors, open and closed loop inverters, servo inverters and regenerative inverters.



**MEET OUR
CUSTOMERS'
NEEDS**



**WORLDWIDE
DISTRIBUTION
NETWORK**



**IMPROVE
APPLICATION
PERFORMANCE**

ALWAYS BY OUR CUSTOMER'S SIDE, ALL OVER THE WORLD

Bonfiglioli has globalized production over the years. Today, we operate 14 manufacturing plants around the world to serve customers in local markets more effectively. Our plants in Italy, Germany, USA, Brazil, India, China, Vietnam, and Slovakia form a truly efficient distribution network.

Excellence is our number one priority.

We use the latest technologies to optimize our daily production. Bonfiglioli is fully committed to a more sustainable workplace and supports various local initiatives.

All Bonfiglioli employee pay the utmost attention to even the smallest details, to ensure that our customers receive products with unrivalled quality.



**LEAN
MANUFACTURING**



INDUSTRY 4.0



**FAST DELIVERY
TIMES**



**WORLDWIDE
PRESENCE**

SHARING THE VALUE OF OUR WORK WITH YOU

Our team is fully dedicated to continuous improvement in the fields of quality, safety and the environment, across the entire value chain, from the smallest supplier to the end customer.

Bonfiglioli management systems are certified to ISO 9001:2008, ISO 14001 and OHSAS 18001, while our products are covered by 7 international certifications.

Responsibility, excellence and continuous improvement are some of the basic elements that make Bonfiglioli a preferred partner.

SYSTEM CERTIFICATIONS:



PRODUCT CERTIFICATIONS:



HEAVY MACHINERY HAS BONFIGLIOLI PRODUCTS AT ITS HEART

The HDP parallel shaft, HDO right-angle and 300 planetary series offer designers the ultimate flexibility in build architecture and transmissible power range.

For every installation, cooling or lubrication requirement, each gearmotor can easily be rendered fit-for-purpose through the long, complete list of standard options and accessories.

Logistics

(belt, chain, bucket, screw conveyors, gantry and trolley drives, etc.)

Winch and Lift

(cranes, hoists, winches, etc.)

Packaging

(filling machines, palletizers, stackers, etc.)

Raw material and resources

(metals, petroleum, forestry, rubber, plastics, cement, sand & stone, etc.)

Mining

(ore crushers, apron and screw feeders, bucket elevators, mills and kilns, etc.)

Purification and Production

(pulp and paper, air cooling, sewage, recycling, etc.)



PRODUCT RELIABILITY IS ACHIEVED THROUGH A PRODUCTION PROCESS GEARED TOWARDS EXCELLENCE

All essential parts are produced in Bonfiglioli's own plant using constantly updated machine tools of the latest generation.

Machining technology is therefore fully owned by Bonfiglioli and part of a know-how acquired over 50 years of manufacturing.

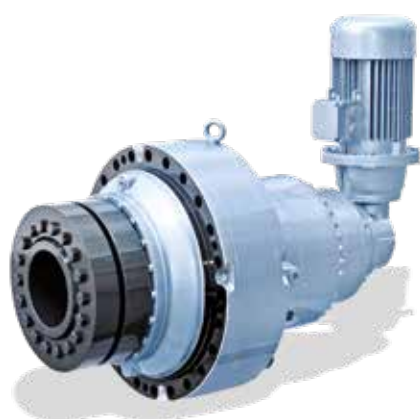
Today, precision machining is very much a part of Bonfiglioli's consolidated heritage.

The CNC machine tools and equipment used for the production of gears and other essential component parts are all state-of-the-art in terms of quality, efficiency and productivity in general.

Advanced machinery has always been central to Bonfiglioli's production system and Bonfiglioli has always assigned top priority to the quality and efficiency of its machine park, and has invested accordingly.



Bonfiglioli products



300M PLANETARY GEARMOTORS

The planetary drives from the 300 series are particularly suitable for power transmission in applications for mixing fermenting matter.

The vertical configuration for the agitators and right angle configuration for the mixers, typical of the installation management processes, are available as part of the standard offer.

In particular, vertical mounting significantly reduces the dimensions of the drive, ensuring high torque and excellent performance in this application type.

300 Series planetary gearboxes are extremely compact despite their outstanding transmissible torque characteristics and overload capacity typical of "Heavy Duty" applications.

Superb flexibility is ensured by a large number of optional variants that can be selected directly from the catalogue and that allow gearbox configurations to be customised to meet the needs of specific applications.

| Type | Torque [Nm] |
|------|-------------|
| 300 | 1 250 |
| 301 | 2 460 |
| 303 | 2 970 |
| 304 | 3 960 |
| 305 | 5 800 |
| 306 | 10 840 |
| 307 | 15 680 |
| 309 | 23 240 |
| 310M | 33 460 |
| 311M | 49 210 |
| 313M | 60 940 |
| 314M | 80 640 |
| 315M | 100 800 |
| 316M | 134 390 |
| 317M | 207 490 |
| 318M | 297 550 |
| 319 | 471 190 |
| 321 | 655 740 |
| 323 | 890 310 |
| 325 | 1 286 000 |

Torque range

1 250 ... 1 286 000 Nm

Mechanical rating

up to 1 050 kW

Gear ratios

3.4 ... 5234



ATEX GEARBOX AVAILABLE

HDO BEVEL HELICAL GEARBOX

The bevel helical gear reducer series from Bonfiglioli optimises superior performance with compact dimensions and flexibility. The several options that can be selected from the catalogue facilitate customization to meet specific application requirements.

Gear case from nodular cast iron guarantee rigidity in all circumstances, while the gears - integrally ground finished on their profile - ensure quiet and vibration-free operations even in the harshest conditions.



Torque range

8 990 ... 209 900 Nm

Gear ratios

5.6 ... 490

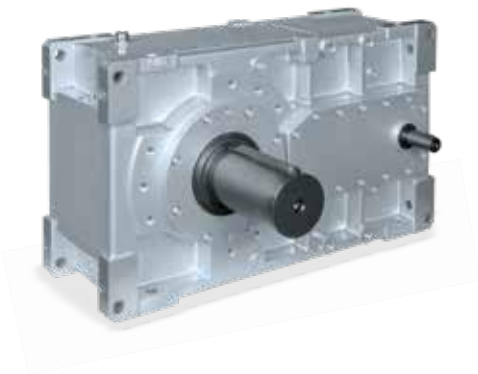
Mounting

Foot, flange, shaft mounting



ATEX GEARBOX AVAILABLE

| Type | Torque [Nm] |
|---------|-------------|
| HDO 71 | 8 990 |
| HDO 81 | 14 740 |
| HDO 91 | 21 610 |
| HDO 95 | 23 200 |
| HDO 100 | 28 210 |
| HDO 110 | 31 790 |
| HDO 120 | 41 250 |
| HDO 125 | 49 240 |
| HDO 130 | 69 570 |
| HDO 140 | 87 060 |
| HDO 150 | 117 200 |
| HDO 160 | 147 070 |
| HDO 170 | 190 190 |
| HDO 180 | 209 900 |



HDP PARALLEL SHAFT GEARBOX

Consistently high torque ratings, gear ratios in close progression, numerous mounting options along with compact dimensions will ease the engineering of any application.

The housing from nodular cast iron ensures robustness even in the harshest environment and the class of precision the gear are machined into helps produce an extremely quiet and vibration-free operation.

| Type | Torque [Nm] |
|---------|-------------|
| HDP 60 | 5 190 |
| HDP 70 | 7 080 |
| HDP 80 | 12 600 |
| HDP 90 | 17 900 |
| HDP 100 | 28 210 |
| HDP 110 | 31 790 |
| HDP 120 | 41 250 |
| HDP 125 | 49 240 |
| HDP 130 | 69 570 |
| HDP 140 | 87 060 |
| HDP 150 | 117 200 |
| HDP 160 | 147 070 |
| HDP 170 | 190 190 |
| HDP 180 | 209 900 |

Torque range
5 190 ... 209 900 Nm

Gear ratios
7.1 ... 500

Mounting
Foot, flange, shaft mounting

 ATEX GEARBOX AVAILABLE

ACTIVE POWERFUL DRIVE

A full series of flexible solution drives that are versatile and extremely easy to use, featuring control for high performance and unbeatable advantages in their scalability and compact size.



Power range

ACT 410: 0.55 ... 132 kW

ACT 210: 0.55 ... 9.2 kW

Overload Capacity

150% for 60 s; 200% for 1 s

Switching Frequency

2, 4, 8, 12, 16 kHz

Enclosure

IP20 (EN 60529)

EMC Filter

Integrated up to 9.2 kW (EN 61800-3)

| Type | Power kW |
|-----------|----------|
| ACT410-05 | 0.55 |
| ACT410-07 | 0.75 |
| ACT410-09 | 1.1 |
| ACT410-11 | 1.5 |
| ACT410-12 | 1.85 |
| ACT410-13 | 2.2 |
| ACT410-15 | 3.0 |
| ACT410-18 | 4.0 |
| ACT410-19 | 5.5 |
| ACT410-21 | 7.5 |
| ACT410-22 | 9.2 |
| ACT410-23 | 11 |
| ACT410-25 | 15 |
| ACT410-27 | 18.5 |
| ACT410-29 | 22 |
| ACT410-31 | 30 |
| ACT410-33 | 37 |
| ACT410-35 | 45 |
| ACT410-37 | 55 |
| ACT410-39 | 65 |
| ACT410-43 | 75 |
| ACT410-45 | 90 |
| ACT410-47 | 110 |
| ACT410-49 | 132 |

| | |
|-----------|------|
| ACT210-05 | 0.55 |
| ACT210-07 | 0.75 |
| ACT210-09 | 1.1 |
| ACT210-11 | 1.5 |
| ACT210-13 | 2.2 |
| ACT210-15 | 3.0 |
| ACT210-18 | 4.0 |
| ACT210-19 | 5.5 |
| ACT210-21 | 7.5 |
| ACT210-22 | 9.2 |



ACTIVE CUBE

HIGH POSITIONING & SPEED CONTROL

A full series of solution & servo drives, compact and flexible, dedicated both to high demanding industrial automation systems and to motion control architectures, in match with Bonfiglioli servomotors.

| Type | Power kW |
|-----------|----------|
| ACU410-01 | 0.25 |
| ACU410-03 | 0.37 |
| ACU410-05 | 0.55 |
| ACU410-07 | 0.75 |
| ACU410-09 | 1.1 |
| ACU410-11 | 1.5 |
| ACU410-12 | 1.85 |
| ACU410-13 | 2.2 |
| ACU410-15 | 3.0 |
| ACU410-18 | 4.0 |
| ACU410-19 | 5.5 |
| ACU410-21 | 7.5 |
| ACU410-22 | 9.2 |
| ACU410-23 | 11 |
| ACU410-25 | 15 |
| ACU410-27 | 18.5 |
| ACU410-29 | 22 |
| ACU410-31 | 30 |
| ACU410-33 | 37 |
| ACU410-35 | 45 |
| ACU410-37 | 55 |
| ACU410-39 | 65 |
| ACU410-43 | 75 |
| ACU410-45 | 90 |
| ACU410-47 | 110 |
| ACU410-49 | 132 |
| ACU410-51 | 160 |
| ACU410-51 | 200 |
| ACU410-51 | 160 |
| ACU410-53 | 200 |
| ACU410-55 | 250 |
| ACU410-57 | 315 |
| ACU410-59 | 355 |
| ACU410-61 | 400 |

Power range

ACU 410: 0.25 ... 400 kW (1200 kW in parallel connection)
 ACU 210: 0.25 ... 9.2 kW

Overload Capacity

150% for 60 s; 200% for 1 s

Switching Frequency

2, 4, 8, 12, 16 kHz

Enclosure

IP20 (EN 60529), IP 54 available

EMC Filter

Integrated up to 9.2 kW (EN 61800-3)

| Type | Power kW |
|-----------|----------|
| ACU210-01 | 0.25 |
| ACU210-03 | 0.37 |
| ACU210-05 | 0.55 |
| ACU210-07 | 0.75 |
| ACU210-09 | 1.1 |
| ACU210-11 | 1.5 |
| ACU210-13 | 2.2 |
| ACU210-15 | 3.0 |
| ACU210-18 | 4.0 |
| ACU210-19 | 5.5 |
| ACU210-21 | 7.5 |
| ACU210-22 | 9.2 |

Global Presence



Bonfiglioli is a market force with a presence spanning 22 countries on 5 continents. Our organization makes the most of geographic proximity to offer complete solutions combining efficiency and competence.



3780
EMPLOYEES



20
BRANCHES



13
PLANTS



550
DISTRIBUTORS



80
COUNTRIES

We Are a Global Company

Thanks to an international network of sales branches and closely interconnecting production plants, we can guarantee the same high standards of Bonfiglioli quality anywhere at any given time. Aware that our direct presence in local markets is the key to long-lasting success, our family includes 20 sales branches, 13 production plants and more than 500 distributors around the world.

Our organization is always close by, offering complete and efficient solutions and supporting our customers with dedicated services, such as co-engineering or after-sales assistance.



Bonfiglioli Worldwide Locations

Australia

Bonfiglioli Transmission (Aust.) Pty Ltd.

2, Cox Place Glendenning NSW 2761
Locked Bag 1000 Plumpton NSW 2761
Tel. +61 2 8811 8000

Brazil

Bonfiglioli Redutores do Brasil Ltda.

Travessa Cláudio Armando 171 - Bloco 3 - CEP 09861-730
Bairro Assunção - São Bernardo do Campo - São Paulo
Tel. +55 11 4344 2322

China

Bonfiglioli Drives (Shanghai) Co. Ltd.

#68, Hui-Lian Road, QingPu District,
201707 Shanghai
Tel. +86 21 6700 2000

France

Bonfiglioli Transmission s.a.

14 Rue Eugène Pottier
Zone Industrielle de Moimont II - 95670 Marly la Ville
Tel. +33 1 34474510

Germany

Bonfiglioli Deutschland GmbH

Sperberweg 12 - 41468 Neuss
Tel. +49 0 2131 2988 0

Bonfiglioli Vectron GmbH

Europark Fichtenhain B6 - 47807 Krefeld
Tel. +49 0 2151 8396 0

O&K Antriebstechnik GmbH

Ruhrallee 8-12 - 45525 Hattingen
Tel. +49 0 2324 2050 1

India

Bonfiglioli Transmissions Pvt. Ltd.

Mobile, Wind

AC 7 - AC 11 Sidco Industrial Estate
Thirumudivakkam Chennai - 600 044
Tel. +91 844 844 8649

Industrial

Survey No. 528/1, Perambakkam High Road Mannur Village,
Sriperumbudur Taluk Chennai - 602 105
Tel. +91 844 844 8649

Industrial

Plot No.A-9/5, Phase IV MIDC Chakan,
Village Nighoje Pune - 410 501
Tel. +91 844 844 8649

Italy

Bonfiglioli Riduttori S.p.A.

Headquarters

Via Giovanni XXIII, 7/A - 40012 Lippo di Calderara di Reno
Tel. +39 051 647 3111

EVO - Industrial

Via Bazzane, 33/A - 40012 Calderara di Reno
Tel. +39 051 6473111

Mobile, Wind

Via Enrico Mattei, 12 Z.I. Villa Selva - 47100 Forlì
Tel. +39 0543 789111

Bonfiglioli Italia S.p.A

Via Sandro Pertini lotto 7b - 20080 Carpiano
Tel. +39 02 985081

Bonfiglioli Mechatronic Research S.p.A

Via Unione 49 - 38068 Rovereto
Tel. +39 0464 443435/36

New Zealand

Bonfiglioli Transmission (Aust.) Pty Ltd.

88 Hastie Avenue, Mangere Bridge, 2022 Auckland
PO Box 11795, Ellerslie
Tel. +64 09 634 6441

Singapore

Bonfiglioli South East Asia Pte Ltd.

8 Boon Lay Way, #04-09,
8@ Tadehub 21, Singapore 609964
Tel. +65 6268 9869

Slovakia

Bonfiglioli Slovakia s.r.o.

Robotnícka 2129
Považská Bystrica, 01701 Slovakia
Tel. +421 42 430 75 64

South Africa

Bonfiglioli South Africa Pty Ltd.

55 Galaxy Avenue, Linbro Business Park, Sandton,
Johannesburg, 2090 South Africa
Tel. +27 11 608 2030

Spain

Tecnotrans Bonfiglioli, S.A.

Pol. Ind. Zona Franca, Sector C, Calle F, nº 6
08040 Barcelona
Tel. +34 93 447 84 00

Turkey

Bonfiglioli Turkey Jsc

Atatürk Organize Sanayi Bölgesi, 10007 Sk. No. 30
Atatürk Organize Sanayi Bölgesi, 35620 Çiğli - Izmir
Tel. +90 0 232 328 22 77

United Kingdom

Bonfiglioli UK Ltd.

Unit 1 Calver Quay, Calver Road, Winwick
Warrington, Cheshire - WA2 8UD
Tel. +44 1925 852667

USA

Bonfiglioli USA Inc.

3541 Hargrave Drive
Hebron, Kentucky 41048
Tel. +1 859 334 3333

Vietnam

Bonfiglioli Vietnam Ltd.

Lot C-9D-CN My Phuoc Industrial Park 3
Ben Cat - Binh Duong Province
Tel. +84 650 3577411



We have a relentless commitment to excellence, innovation and sustainability. Our team creates, distributes and services world-class power transmission and drive solutions to keep the world in motion.

HEADQUARTERS

Bonfiglioli Riduttori S.p.A.
Via Giovanni XXIII, 7/A
40012 Lippo di Calderara di Reno
Bologna (Italy)
www.bonfiglioli.com

