



# BLUEROLL

The Bonfiglioli platform for  
mobile robots and logistic systems







# BLUEROLL

## CONTENTS

---

<b>BLUEROLL .....</b>	<b>4</b>
The highest level of precision, efficiency and energy optimization .....	4
Fully committed to the efficiency of customers' system over its life cycle .....	5
<b>THE BLUEROLL PLATFORM .....</b>	<b>6</b>
<b>MODULAR AND CUSTOMER-SPECIFIC AGV SOLUTIONS .....</b>	<b>7</b>
<b>BLUEROLL BASIC .....</b>	<b>8</b>
<b>BLUEROLL ADVANCED .....</b>	<b>10</b>
<b>BLUEROLL COMPACT: THE TOP-LEVEL INTEGRATION .....</b>	<b>12</b>
<b>OTHER BONFIGLIOLI SOLUTIONS FOR AGVS .....</b>	<b>13</b>
<b>TECHNICAL DATA .....</b>	<b>14</b>
<b>GLOBAL PRESENCE.....</b>	<b>18</b>

# BLUEROLL

## THE HIGHEST LEVEL OF PRECISION, EFFICIENCY AND ENERGY OPTIMIZATION

With more than 20 years of experience in creating tailored and forward-thinking motion control systems, Bonfiglioli has proven being a reliable partner as **one-stop shop for mechatronic applications** in industrial automation. Bonfiglioli engineering specialists work side by side with customers to develop dedicated integrated solutions, covering the entire motion drive train according to an **Industry 4.0 approach**.

Thanks to the extensive know-how and the long-term collaboration with key customers, our two centers of excellence, located in Italy and Germany, develop **breakthrough mechatronic innovations**, including low backlash planetary gearboxes, servomotors, open and closed loop inverters, servo drives and energy regenerative units.

This, combined with a comprehensive range of **Professional Services**, enables us to respond to customers' requests by:

- providing **user friendly, plug & play solutions**
- **increasing** applications' **efficiency** and **productivity**
- designing **flexible, modular solutions** targeted to a wide range of applications
- granting access to real time data for **diagnostic, maintenance** and **predictive analytics**



### ASSESSMENT & RECOMMENDATION



### ENGINEERING & PLANNING



### INSTALLATION & COMMISSIONING



### RETROFIT & UPGRADE



### MAINTENANCE & REPAIR

---

## FULLY COMMITTED TO THE SUCCESS OF OUR CUSTOMERS' SYSTEM OVER ITS LIFE CYCLE

Bonfiglioli technical sales experts support customers with a proactive, flexible and dedicated approach **throughout the system's entire life cycle**.

- **Assessment and recommendation:** our team provides support starting from the very early stage of the project by assessing the requirements and developing a targeted analysis of the application, guiding customers in the choice of the most suitable components for their drive solution.
- **Engineering and planning:** our experts work with customers to co-engineer their application, offering consultancy in sizing, fine tuning and selecting the optimized drive train, always considering life cycle cost optimization.
- **Installation and commissioning:** we partner with our customers to ensure a quick, cost-effective and successful installation, optimizing the benefits and functions of their drive technology.
- **Retrofit and upgrade:** we update customers' machines with state-of-the-art technology to ensure constant levels of productivity, reliability and performance.
- **Maintenance and repair:** we work side by side with customers to avoid failures, reduce down times and ensure the best system operation.

# THE BLUEROLL PLATFORM

## MODULAR AGVS AND AMRS SOLUTIONS TAILORED TO YOUR NEEDS

BlueRoll is the Bonfiglioli platform specifically developed to respond to the demanding requirements of the AGVs and AMRs sector in terms of power density, position accuracy and high load capacity. With its **flexibility** and **full customization**, it offers a **modular solution**, that reduces complexity while ensuring **maximum power density** and **energy efficiency**.

### FULL CUSTOMIZATION FOR RELIABLE PERFORMANCE AND HIGH POWER DENSITY



#### EXPERTISE FOR CUSTOMIZED SOLUTIONS

Active partnerships and **co-engineering** to satisfy a **wide range of individual requirements**, from design constraints to type of duty cycles



#### COMPLEXITY REDUCTION

The **freely configurable modular solution** is available in various combinations and sizes to match both **design and performance requirements**



#### SECTOR SPECIFIC REQUIREMENTS

The solution can be designed to **meet specific industry sector requirements** such as high / low ambient temperature, surface protection, higher IP protection, compliance with specific regulations

### THE HIGHLY FLEXIBLE AND MODULAR PLATFORM FOR A WIDE SPECTRUM OF APPLICATIONS



WAREHOUSE & LOGISTICS



MATERIAL HANDLING



PHARMACEUTICAL



FOOD & BEVERAGE



E-COMMERCE

# A DEDICATED SOLUTION FOR DIFFERENTS VEHICLES DESIGN

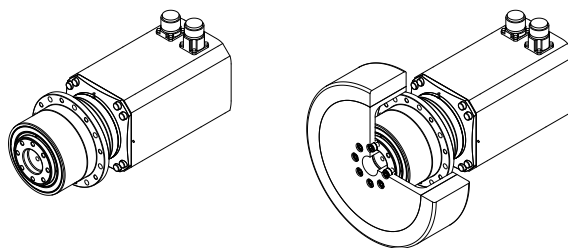
In order to satisfy the requirements of a wide range of different vehicle concepts and designs, Bonfiglioli offers a **modular approach** for AGVs and AMRs, allowing the selection of the **best configuration** to effectively suit the specific application's needs.

Based on the design of your vehicle, we can provide the **single component** (servomotor or precision planetary gearbox, with and without the wheel) or the **integrated geared motor solution**, together with a wide range of **sector-specific components and options**, tuned to the requirements of mobile robots and logistic systems.

## CUSTOMIZED LEVELS OF INTEGRATION

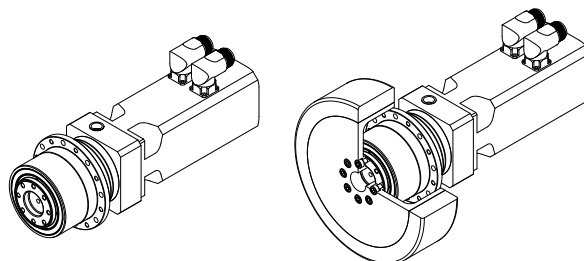
### BLUEROLL COMPACT

Extra compact  
Servo geared motors



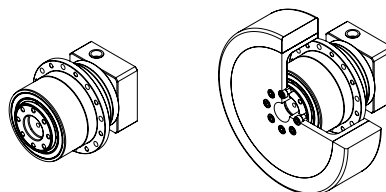
### BLUEROLL ADVANCED

Servo geared motors



### BLUEROLL BASIC

Precision Planetary Gearboxes



*Each version of BlueRoll is available both with and without the wheel.*

# BLUEROLL BASIC

## TQW: PRECISION PLANETARY GEARBOXES FOR AMRS AND AGVS

BlueRoll Basic, based on our TQW planetary gearbox, represents the ideal solution for your drive wheels.. Thanks to its **heavy load capability**, **exceptional compactness**, **efficiency** and **durability**, it fulfills application-specific requirements in an optimum way.

### High energy efficiency

Compared to other technologies, planetary gearboxes allow to reduce energy consumption at any load condition, hence extending battery life.

### Minimized installation space

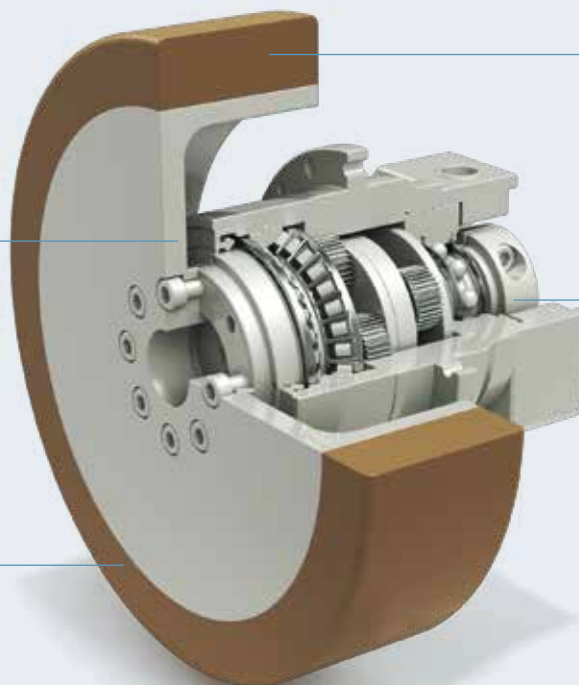
Since the gearbox is almost completely enclosed by the wheel, the required installation space is reduced to the minimum

### Easy installation

Thanks to its fixing flange design, the gearbox can be fitted directly to the chassis of the vehicle

### Heavy loads capability

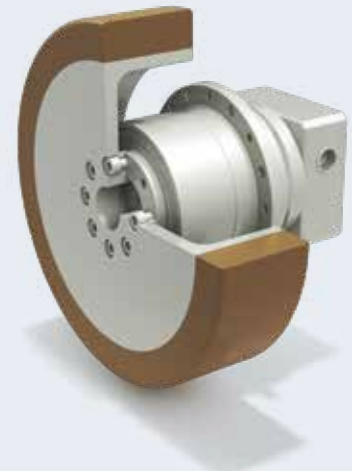
The integrated wheel is supported directly by the reinforced gearbox bearings, which permit ultra-high radial forces





## THE TQW PRECISION PLANETARY GEARBOX SERIES

TQW is available in **three sizes**, each supporting a maximum load (per wheel) of 360, 720, 1020kg. and coupled with a specific industrial wheel, with a diameter of 160 mm, 200 mm or 250 mm. **Maximum speeds** up to 2 m/s (7.2 km/h) are possible.



### GEAR RATIOS

- 9 ... 100

### DEGREE OF PROTECTION

- IP65

### BACKLASH

- Less than 10 arcmin

### MAX RADIAL FORCE

- 2300 ... 5200 N

### MAXIMUM INPUT SPEED

- 4000 ... 6000 rpm

### MAXIMUM LOAD CAPACITY

- 360 ... 1020 kg

### MAXIMUM SPEED

- <2m/s

### POSITION PRECISION

- 0.2 ... 0.3 mm

### WEIGHT (WHEEL INCLUDED)

- 4,2 ... 18,1 kg

### KEY FEATURES

- Extremely compact
- High energy efficiency
- Output shaft supported by heavy load capacity bearings
- Highly reliable
- Life lubricated
- Designed for continuous and intermittence duty

### NOMINAL TORQUE (Nm)

TQW 060	30
TQW 070	65
TQW 090	155

### MAX LOAD CAPACITY (kg)

TQW 060	360
TQW 070	720
TQW 090	1,020

# BLUEROLL ADVANCED

## A POWERFUL AND MODULAR SOLUTION TO DRIVE ANY AGVS AND AMRS DESIGN

Thanks to the effective combination of our **Permanent Magnet Servomotors**, characterized by high torque density and compact design, and our **Precision Planetary Gearboxes** designed for high loads support, BlueRoll Advanced offers the **ideal performance for AGV applications**, ensuring great levels of flexibility, safety and space-saving.

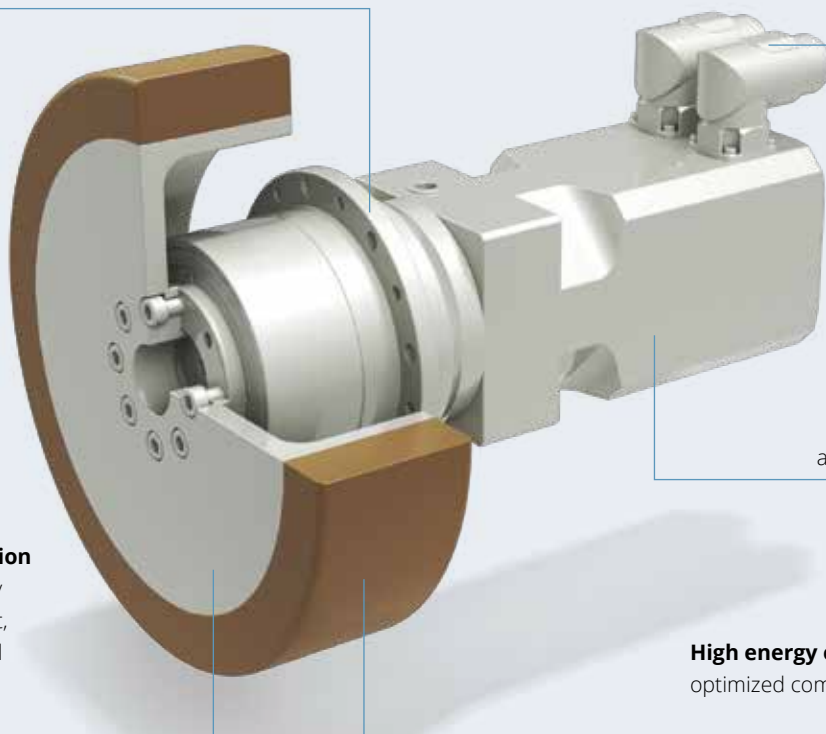
Embeds all the benefits of TQW gearbox from BlueRoll Basic

**Tailored** for your mobile robot thanks to a wide range of sector-specific features, i.e.: low voltage supply, special feedbacks including safety encoders, holding brakes

The **modular design** allows you to freely combine gearbox and motor to fulfil different application requirements

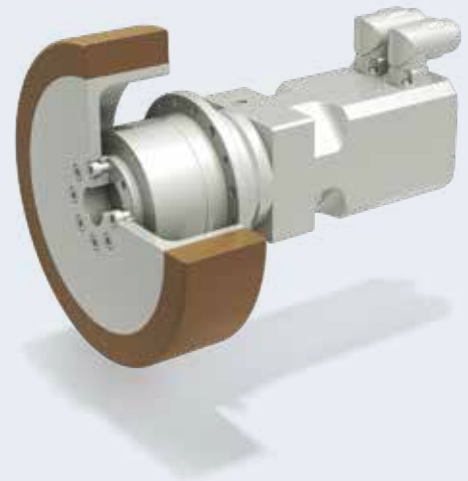
**Extensive customization** possibilities to meet any application requirement, including environmental constraints (e.g. low temperature)

**High energy efficiency** thanks to the optimized combination of servo motor and gearbox



## PERMANENT MAGNET SERVO GEARMOTORS

The BlueRoll Advanced servomotors are permanent magnet synchronous gearmotors with **highly compact dimensions** and **low inertia**. They meet the most stringent demands for precision, dynamics and speed settings thanks to their high-quality neodymium iron boron rare-earth magnets and optimized mechatronic integration. The solution allows great freedom in the **product customization**, thanks to the **wide range of options**, for an **optimized and flexible servo package**.



### POWER SUPPLY

- Customized winding for low voltage supply (i.e. 48Vdc)

### RATED SPEED

- 1600, 3000, 4500, 6000 rpm

### SIZES

- 3 gearbox sizes
- 4 motor frames

### BACKLASH

- Less than 10 arcmin

### BRAKE

- Holding brake
- Safety brake

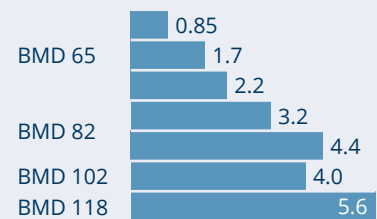
### DEGREE OF PROTECTION

- IP 65, IP 67 possible

### KEY FEATURES

- Highly customizable solution
- Specific matching between the individual application demands and the gearmotor's operating area
- Wide range of encoders and protocols suitable for functional safety
- Various connectors options or flying cable

### BMD SERIES MOTOR TORQUE (Nm)



# BLUEROLL COMPACT: THE TOP-LEVEL INTEGRATION

## EXTRA COMPACT SERVO GEARMOTORS

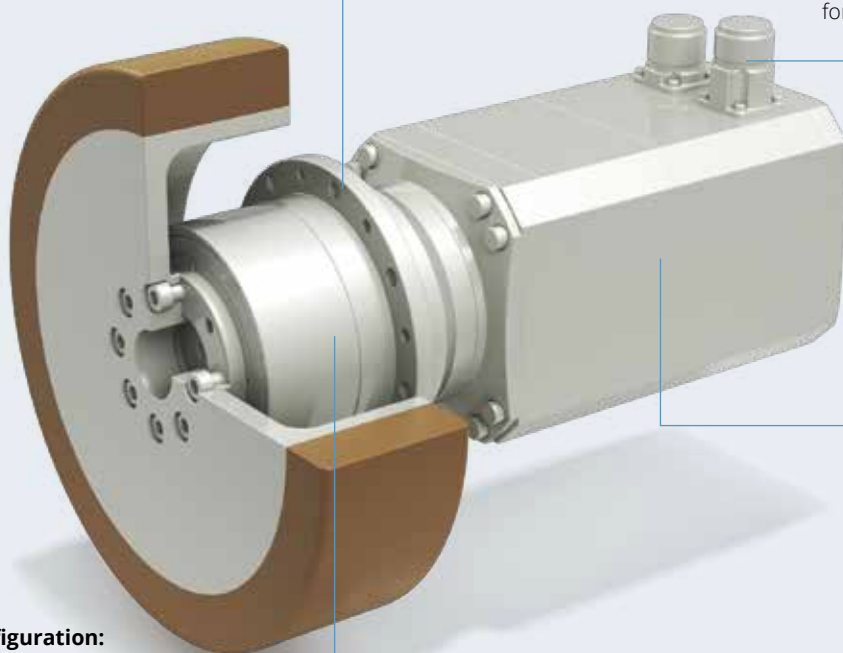
Reach the **highest level of customization and compactness** with our **complete solution**, characterized by **fully tested** and **validated dimensioning** tailored to your specific requirements. Developed to respond to customer's requests, the extreme compactness of this solution allows **greater flexibility in the design** of your AMR application.

Embeds all the benefits of TQW gearbox from BlueRoll Basic

**Make the battery last longer:** the combination of low voltage PMSM and a planetary gearbox in a compact design, makes BlueRoll the right choice for your battery-powered system.

**Simplify your AGV design:** the Compact version is **25% shorter** than the Advanced version, maximizing space-saving and preserving high-level performance.

**Choose the best configuration:** thanks to its wide range of gearbox ratios, feedback systems (including safety encoders), and motor options, BlueRoll is the most versatile platform on the market.



# OTHER BONFIGLIOLI SOLUTIONS FOR AGVs

Thanks to over 40 years of experience in the sector, Bonfiglioli is the right partner to support you in **developing and designing** electric powertrain and drive **solutions for warehouse vehicles**.

Our EL Series is able to respond to the most demanding requirements of warehousing applications, ensuring **great loads capability, extreme compactness** and **high maneuverability**.

## EL SERIES

Bonfiglioli EL powertrains are a perfect match for the most demanding warehousing applications (Class 2 and Class 3). Warehousing trucks require high maneuverability in tight spaces, provided by drives like the EL series drives, with the smallest operating radius in vertical arrangements.



## GEAR RATIOS

- 13 ... 32

## POWER RANGE

- 2 ... 7 kW

## MAIN OPTIONS

- Cold environment versions
- Integrated tiller or castor wheel supports

## KEY FEATURES

- Two-stage helical & bevel gearboxes
- Manual steer and power steer versions
- Optimized gear design for efficiency and noise
- Integrated low-voltage electric motor
- Integrated parking brake
- Complete system with tyres

## TORQUE (Nm)

EL100	450
EL09 V	500
EL96	500
EL10 V	900
EL300	1,100
EL92	1,500
EL93	1,500
EL94	1,500
EL14 V	1,900

## MAX WHEEL LOAD (kg)

EL100	1,200
EL09 V	1,200
EL96	1,500
EL10 V	1,500
EL300	2,200
EL92	3,000
EL93	3,000
EL94	3,000
EL14 V	3,400



MATERIAL  
HANDLING  
VEHICLES



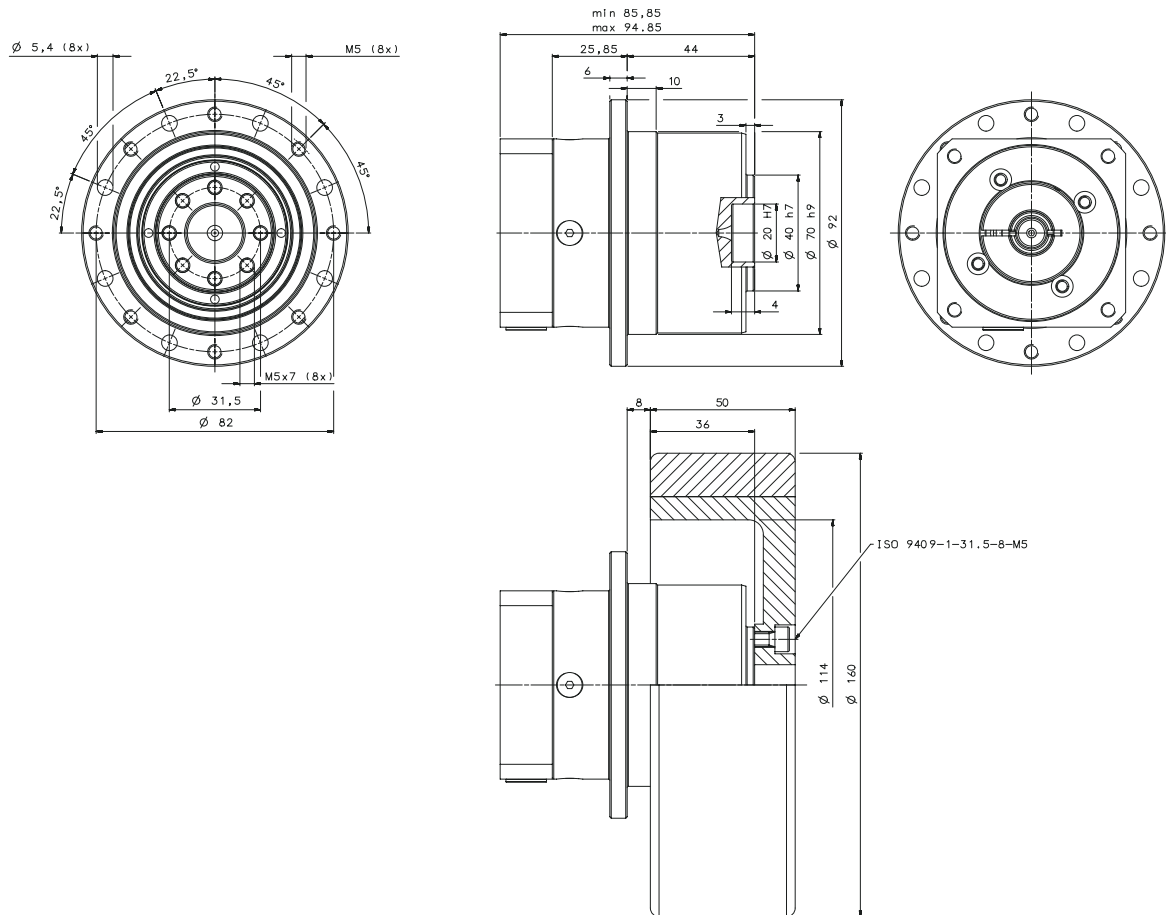
REACH  
TRUCKS



TOW  
TRACTORS



## TQW 060



TQW 060		Ratio													Wheel technical data		
		9	12	15	16	20	25	28	30	35	40	50	70	100			
Rated output torque	$M_{n2}$ [Nm]	29	29	29	30	30	30	30	29	30	30	30	30	18	Weight	[kg]	2,5
Maximum acceleration output torque	$M_{a2}$ [Nm]	55	55	55	45	45	45	45	55	45	45	45	45	30	Mass inertia	[kgcm <sup>2</sup> ]	82,8
Emergency stop output torque <sup>[1]</sup>	$M_{p2}$ [Nm]	60	70	70	70	70	70	70	70	70	70	70	70	70	Roll resistance <sup>[4]</sup>	[%]	1
Nominal input speed	$n_1$ [min <sup>-1</sup> ]	3300	3300	3300	3500	3500	3500	3700	4000	4000	4000	4000	4000	4000	Minimum Friction coefficient <sup>[5]</sup>	[-]	0,75
Maximum momentary input speed <sup>[2]</sup>	$n_{1max}$ [min <sup>-1</sup> ]	4000	4000	4000	5000	5000	5000	6000	6000	6000	6000	6000	6000	6000	Temperature range	[C°]	+30 / -5
Backlash	$\varphi_R$ [arcmin]								10						Tread		Dynaroll
Torsional stiffness	$C_t$ [Nm/arcmin]								6						Tread colour		Black
Maximum radial force <sup>[3]</sup>	$R_{2max}$ [N]								2300						Tread Hardness		95° Shore A
Maximum tilting moment applied to the output shaft <sup>[3]</sup>	$M_{T2max}$ [Nm]								108						Rim material		S235JR
Mass moment of inertia at motor shaft	$J_g$ [kgcm <sup>2</sup> ]								0,06 ... 0,21						Colour		Black
Gearbox weight	$m_g$ [kg]								1,7						Corrosion protection		Standard Painting

[1] Permitted 1000 times during service life of the gearbox.

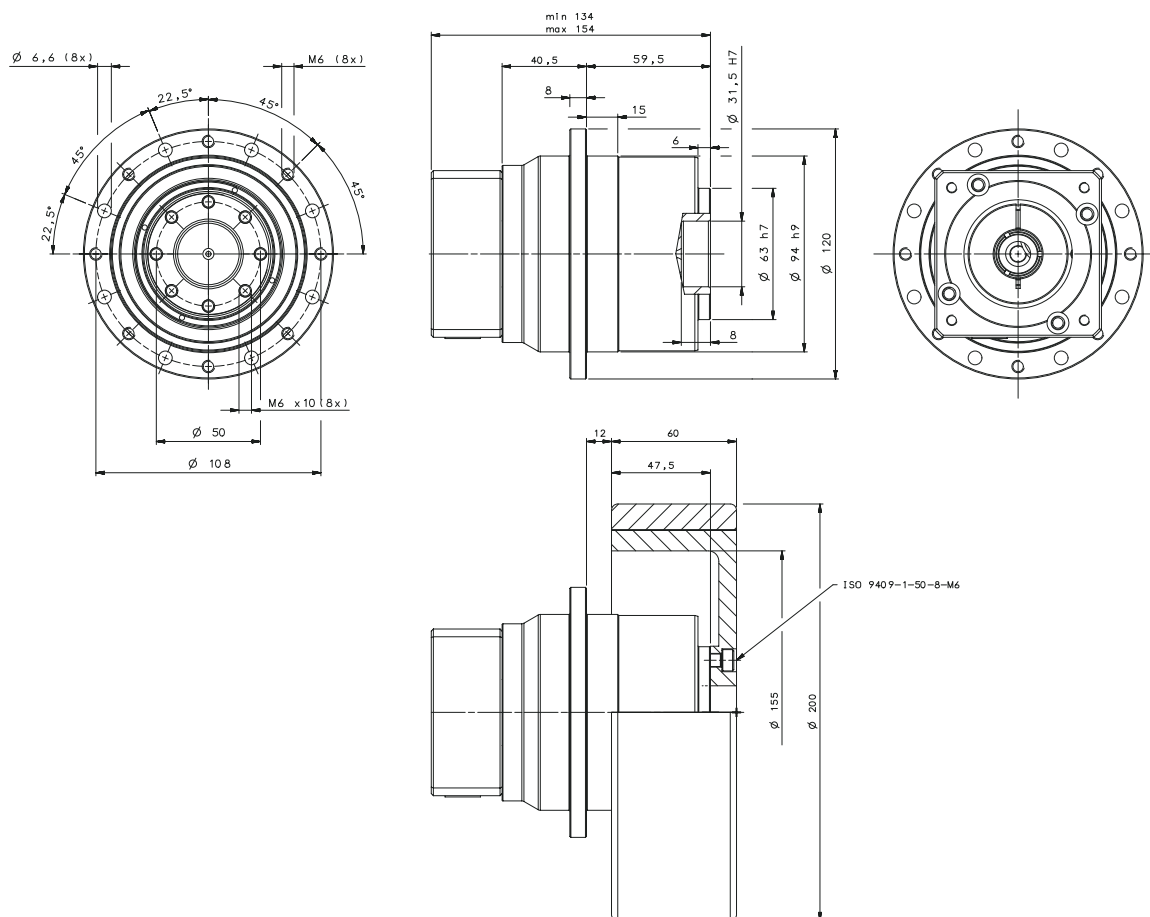
[2] The speed the unit can be driven at occasionally and in non-repetitive conditions. For S5 duty cycle, it cannot be applied continuously for more than 30 seconds.

[3] Calculated at lifetime of 20000 h - output shaft speed of 100 rpm.

[4] Roll resistance expressed in terms of additional mass percentage to the load applied and at 7,2 km/h.

[5] Static friction coefficient on concrete.

## TQW 070



TQW 070		Ratio													Wheel technical data		
		9	12	15	16	20	25	28	30	35	40	50	70	100			
Rated output torque	$M_{n2}$ [Nm]	65	65	65	60	60	50	50	65	50	60	50	50	40	Weight	[kg]	4,3
Maximum acceleration output torque	$M_{a2}$ [Nm]	120	120	120	110	110	100	100	120	100	110	100	100	70	Mass inertia	[kgcm <sup>2</sup> ]	258,9
Emergency stop output torque <sup>[1]</sup>	$M_{p2}$ [Nm]	150	160	160	160	160	160	160	150	160	160	160	160	150	Roll resistance <sup>[4]</sup>	[%]	1
Nominal input speed	$n_1$ [min <sup>-1</sup> ]	3500	3500	3500	3500	3500	3200	4000	4000	4000	4000	4000	4000	4000	Minimum Friction coefficient <sup>[5]</sup>	[-]	0,75
Maximum momentary input speed <sup>[2]</sup>	$n_{1max}$ [min <sup>-1</sup> ]	3500	3500	3500	4500	4500	4500	6000	6000	6000	6000	6000	6000	6000	Temperature range	[C°]	+30 / -5
Backlash	$\varphi_R$ [arcmin]								10						Tread		Dynaroll
Torsional stiffness	$C_t$ [Nm/arcmin]								23						Tread colour		Black
Maximum radial force <sup>[3]</sup>	$R_{2max}$ [N]								4100						Tread Hardness		95° Shore A
Maximum tilting moment applied to the output shaft <sup>[3]</sup>	$M_{T2max}$ [Nm]								281						Rim material		S235JR
Mass moment of inertia at motor shaft	$J_g$ [kgcm <sup>2</sup> ]								0,36 ... 0,81						Colour		Black
Gearbox weight	$m_g$ [kg]								5,5						Corrosion protection		Standard Painting

[1] Permitted 1000 times during service life of the gearbox.

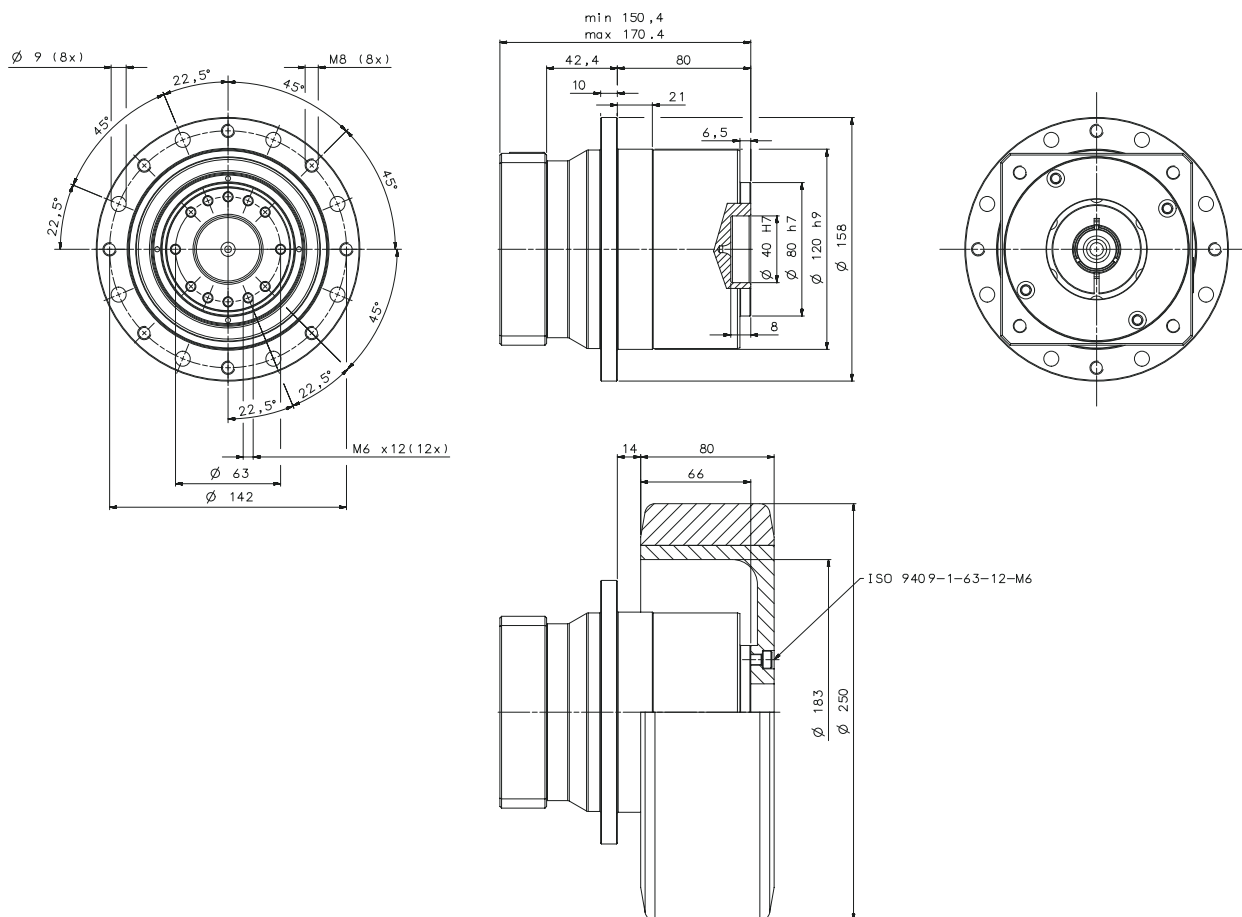
[2] The speed the unit can be driven at occasionally and in non-repetitive conditions. For S5 duty cycle, it cannot be applied continuously for more than 30 seconds.

[3] Calculated at lifetime of 20000 h - output shaft speed of 100 rpm.

[4] Roll resistance expressed in terms of additional mass percentage to the load applied and at 7,2 km/h.

[5] Static friction coefficient on concrete.

# TQW 090



TQW 090		Ratio													Wheel technical data		
		9	12	15	16	20	25	28	30	35	40	50	70	100			
Rated output torque	$M_{n2}$ [Nm]	155	155	155	155	155	125	125	155	125	135	125	125	100	Weight	[kg]	7,2
Maximum acceleration output torque	$M_{a2}$ [Nm]	280	300	300	300	300	240	240	300	240	300	240	240	160	Mass inertia	[kgcm <sup>2</sup> ]	619,1
Emergency stop output torque <sup>[1]</sup>	$M_{p2}$ [Nm]	300	360	360	360	360	360	360	360	360	360	360	360	300	Roll resistance <sup>[4]</sup>	[%]	1
Nominal input speed	$n_1$ [min <sup>-1</sup> ]	3000	3000	3000	3000	3000	3000	3500	3500	3500	3500	3500	3500	3500	Minimum Friction coefficient <sup>[5]</sup>	[-]	0,75
Maximum momentary input speed <sup>[2]</sup>	$n_{1max}$ [min <sup>-1</sup> ]	4000	4000	4000	4500	4500	4500	5000	5000	5000	5000	5000	5000	5000	Temperature range	[°C]	+30 / -5
Backlash	$\varphi_R$ [arcmin]	10													Tread		Dynaroll
Torsional stiffness	$C_t$ [Nm/arcmin]	50													Tread colour		Black
Maximum radial force <sup>[3]</sup>	$R_{2max}$ [N]	5200													Tread Hardness		95° Shore A
Maximum tilting moment applied to the output shaft <sup>[3]</sup>	$M_{t2max}$ [Nm]	403													Rim material		S235JR
Mass moment of inertia at motor shaft	$J_g$ [kgcm <sup>2</sup> ]	0,47 ... 3,05													Colour		Black
Gearbox weight	$m_g$ [kg]	10,9													Corrosion protection		Standard Painting

[1] Permitted 1000 times during service life of the gearbox.

[2] The speed the unit can be driven at occasionally and in non-repetitive conditions. For S5 duty cycle, it cannot be applied continuously for more than 30 seconds.

[3] Calculated at lifetime of 20000 h - output shaft speed of 100 rpm.

[4] Roll resistance expressed in terms of additional mass percentage to the load applied and at 7,2 km/h.

[5] Static friction coefficient on concrete.



## PERMANENT MAGNET SERVOMOTORS

			BMD 65												BMD 82			BMD 102		BMD 118		
Standstill torque	<b>M<sub>0</sub></b>	[Nm]	0,85				1,70				2,20				3,20	4,40	4,00		5,60			
Rated torque	<b>M<sub>n</sub></b>	[Nm]	0,83	0,80	0,76	0,73	1,65	1,60	1,52	1,45	2,12	2,05	1,95	3,15	3,00	4,20	3,70	3,40	5,50			
Rated speed	<b>n</b>	[min <sup>-1</sup> ]	1600 3000 4500 6000				1600 3000 4500 6000				1600 3000 4500				1600 3000		1600					
Rated frequency	<b>f<sub>n</sub></b>	[Hz]	107	200	300	400	107	200	300	400	107	200	300	107	200	107	107	200	107			
Rated power	<b>P<sub>n</sub></b>	[kW]	0,14	0,25	0,36	0,46	0,28	0,50	0,72	0,91	0,36	0,64	0,92	0,53	0,94	0,70	0,62	1,01	0,92			
Max torque	<b>M<sub>max</sub></b>	[Nm]	2,55				4,90				6,20				8,50	11,5	11,0		15,0			
Number of poles	<b>2p</b>	[-]	8				8				8				8	8	8		8			
Motor moment of inertia	<b>J</b>	[kg cm <sup>2</sup> ]	0,2				0,4				0,6				1,4	1,7	1,9		4,5			
Electric time constant	<b>τ<sub>el</sub></b>	[ms]	3				3				3				5,7	5,7	8,4		13			
Thermal time constant	<b>τ<sub>therm</sub></b>	[min]	14				20				26				26	33	25		28			
Motor mass without bake/ flywheel	<b>m<sub>M</sub></b>	[kg]	1,3				1,9				2,6				3,5	4,6	4,2		7,7			
Rated voltage	48 Vdc	<b>V<sub>n</sub></b>	[V <sub>AC</sub> ]		31	30	32	32	31	30	31	31	31	31	31	31	31	32	30	31	32	31
Stall RMS current		<b>I<sub>0</sub></b>	[A]	4,04	6,85	9,20	12,0	7,8	13,0	18,0	23,5	10,3	16,6	24,1	15,9	24,8	22,5	19,1	30,0	24,0		
Rated RMS current		<b>I<sub>n</sub></b>	[A]	3,89	6,46	8,30	10,5	7,75	12,8	17,0	21,0	9,98	15,6	21,2	15,0	23,7	21,1	16,4	26,6	21,7		
Max RMS current		<b>I<sub>max</sub></b>	[A]	13,1	21,7	29,6	38,5	26,7	44,4	61,0	79,5	32,7	52,8	76,0	52,7	85,3	66,8	58,5	96,3	78,7		
Back EMF constant phase-phase		<b>K<sub>e</sub></b>	[ $\frac{mV}{min^{-1}}$ ]	14,3	8,44	6,29	4,80	14,4	8,64	6,22	4,80	14,9	9,26	6,45	14,5	8,91	13,7	14,9	9,13	16,1		
Torque constant		<b>K<sub>T</sub></b>	[Nm/A]	0,21	0,12	0,09	0,07	0,22	0,13	0,09	0,07	0,21	0,13	0,09	0,20	0,13	0,20	0,21	0,13	0,23		
Stator phase-phase resistance at 20°C		<b>R<sub>pp</sub></b>	[Ω <sub>20°</sub> ]	1,76	0,62	0,34	0,20	0,79	0,28	0,15	0,09	0,51	0,20	0,09	0,28	0,11	0,15	0,21	0,08	0,12		
Stator phase-phase inductance		<b>L<sub>pp</sub></b>	[mH]	5,26	1,85	1,02	0,60	2,39	0,86	0,45	0,26	1,56	0,60	0,29	1,59	0,60	0,84	1,78	0,67	1,60		

48 Vdc

# OUR GLOBAL PRESENCE

---

Thanks to an international network of closely interconnected commercial and production sites, we can guarantee the same high standards of Bonfiglioli quality anywhere at any given time. We know that our direct presence in local markets is the key to long-lasting success, so our family includes 18 production sites, 23 commercial sites and more than 550 distributors around the world.

Our organization is always close by, offering complete and efficient solutions and supporting our customers with dedicated services, co-engineering and after-sales assistance.

  
**18**

PRODUCTION SITES

  
**23**

COMMERCIAL SITES

  
**80**

COUNTRIES

  
**550**

DISTRIBUTORS

  
**~4,700**

PEOPLE

## AUSTRALIA

**Bonfiglioli Transmission (Aust.) Pty Ltd**  
2, Cox Place Glendenning NSW 2761  
Locked Bag 1000 Plumpton NSW 2761  
Tel. +61 2 8811 8000



## BRAZIL

**Bonfiglioli Redutores do Brasil Ltda**  
Av. Osvaldo Fregonezi, 171, cjs 31 e 44  
CEP 09851-015 - São Bernardo do Campo  
São Paulo  
Tel. +55 11 4344 2322



## CHINA

**Bonfiglioli Drives (Shanghai) Co. Ltd.**  
#68, Hui-Lian Road, QingPu District,  
201707 Shanghai  
Tel. +86 21 6700 2000



### Industry & Automation Solutions

#568, Longpan Road, Jiading District,  
201707 Shanghai



### Bonfiglioli Trading (Shanghai) Co. Ltd.

Room 423, 4<sup>th</sup> Floor, #38, Yinglun Road,  
China (Shanghai) Pilot Free Trade Zone,  
Shanghai



**Selcom Electronics (Shanghai) Co., Ltd**  
A7, No.5399, Waiqingsong Road, QingPu  
District,  
201707 Shanghai  
Tel. +86 21 6010 8100



A24, No.5399, Waiqingsong Road, QingPu  
District,  
201707 Shanghai  
Tel. +86 21 6010 8100



## FRANCE

**Bonfiglioli Transmission S.A.S.**  
14 Rue Eugène Pottier  
Zone Industrielle de Moimont II  
95670 Marly la Ville  
Tel. +33 1 34474510



## GERMANY

**Bonfiglioli Deutschland GmbH**  
Sperberweg 12 - 41468 Neuss  
Tel. +49 0 2131 2988 0



### Bonfiglioli Vectron GmbH

Europark Fichtenhain B6 - 47807 Krefeld  
Tel. +49 0 2151 8396 0



### O&K Antriebstechnik GmbH

Ruhrallee 8-12 - 45525 Hattingen  
Tel. +49 0 2324 2050 1



## INDIA

**Bonfiglioli Transmission Pvt. Ltd.**  
**Mobility & Wind Industries**  
AC 7 - 11, SIDCO Industrial Estate,  
Thirumudivakkam  
Kancheepuram - 600132 - Tamil Nadu  
Tel. +91 844 844 8649



### Industry & Automation Solutions

Survey No. 528/1, Perambakkam High Road  
Mannur Village, Sriperumbudur Taluk  
Kancheepuram - 602 105 - Tamil Nadu  
Tel. +91 844 844 8649



### Industry & Automation Solutions

Plot No E-5/2, Badhalwadi  
Talegaon MIDC Phase II,  
Pune - 410 507 - Maharashtra  
Tel. +91 844 844 8649



### Bonfiglioli Drive Systems Pvt. Ltd.

**Industry & Automation Solutions**  
No 50, Pappambakkam Road,  
Mannur Village, Sriperumbudur Taluk,  
Kancheepuram - 602105 - Tamil Nadu  
Tel. +91 844 844 8649



## ITALY

**Bonfiglioli Riduttori S.p.A.**  
**Industry & Automation Solutions**  
Via Cav. Clementino Bonfiglioli, 1  
40012 Calderara di Reno  
Tel. +39 051 6473111



### Industry & Automation Solutions

Via Sandro Pertini, lotto 7b  
20080 Carpiano  
Tel. +39 02985081



### Industry & Automation Solutions

Via Saliceto, 15 - 40010 Bentivoglio



### Mobility & Wind Industries

Via Enrico Mattei, 12 Z.I. Villa Selva  
47122 Forlì  
Tel. +39 0543 789111



### Industry & Automation Solutions

Via Unione, 49 - 38068 Rovereto  
Tel. +39 0464 443435/36



### Selcom Group S.p.A.

Via Achille Grandi, 5  
40013 Castel Maggiore (BO)  
Tel. +39 051 6387111



Via Marino Serenari, 18  
40013 Castel Maggiore (BO)  
Tel. +39 051 6387111



Via Cadriano, 19  
40057 Cadriano (BO)  
Tel. +39 051 6387111



## NEW ZEALAND

**Bonfiglioli Transmission (Aust.) Pty Ltd**  
88 Hastie Avenue, Mangere Bridge,  
2022 Auckland  
PO Box 11795, Ellerslie  
Tel. +64 09 634 6441



## SINGAPORE

**Bonfiglioli South East Asia Pte Ltd**  
8 Boon Lay Way, #04-09,  
8@ Tadehub 21, Singapore 609964  
Tel. +65 6268 9869



## SLOVAKIA

**Bonfiglioli Slovakia s.r.o.**  
Robotnícka 2129  
Považská Bystrica, 01701 Slovakia  
Tel. +421 42 430 75 64



## SOUTH AFRICA

**Bonfiglioli South Africa Pty Ltd.**  
55 Galaxy Avenue, Linbro Business Park,  
Sandton, Johannesburg  
2090 South Africa  
Tel. +27 11 608 2030



## SPAIN

**Tecnotrans Bonfiglioli S.A**  
Avinguda del Ferrocarril, n° 14,  
Polígono Industrial Can Estapé  
08755 Castellbisbal - Barcelona  
Tel. +34 93 447 84 00



## TURKEY

**Bonfiglioli Türkiye Jsc**  
Atatürk Organize Sanayi Bölgesi,  
10007 Sk. No. 30  
Atatürk Organize Sanayi Bölgesi,  
35620 Çiğli - İzmir  
Tel. +90 0 232 328 22 77



## UNITED KINGDOM

**Bonfiglioli UK Ltd.**  
Unit 1 Calver Quay, Calver Road, Winwick  
Warrington, Cheshire - WA2 8UD  
Tel. +44 1925 852667



## USA

**Bonfiglioli USA Inc.**  
3541 Hargrave Drive  
Hebron, Kentucky 41048  
Tel. +1 859 334 3333



## VIETNAM

**Bonfiglioli Vietnam Co. Ltd.**  
Lot C-9D-CN, My Phuoc 3 Industrial Park,  
Thoi Hoa ward, Ben Cat city, Binh Duong  
province, Vietnam  
Tel. +84 274 3577411





We have a relentless commitment to excellence, innovation & sustainability. Our team creates, distributes and services world-class power transmission & drive solutions to keep the world in motion.

#### **HEADQUARTERS**

**Bonfiglioli S.p.A**

Via Cav. Clementino Bonfiglioli, 1  
40012 Calderara di Reno - Bologna (Italy)  
Tel. +39 051 6473111

