



CUSTOM HIGH-TECH ELECTRONIC



Selcom

A BONFIGLIOLI COMPANY

Solutions



CUSTOM HIGH-TECH ELECTRONIC

INNOVATIVE SOLUTIONS & SERVICES

Solutions

SELCOM IS MECHATRONIC SERVICE PARTNER
MANUFACTURING CUSTOM HIGH-TECH
ELECTRONIC SOLUTIONS

ABOUT SELCOM GROUP

LEADING THE WORLD OF CUSTOMISED ELECTRONICS

Selcom Group is a global EMS and ODM company which designs, tests and manufactures electronic and electro-mechanical customized solutions.



EXTENSIVE R&D SUPPORT

Product design and engineering



SOURCING AND ASSEMBLY

Direct order fulfilment



TEST AND DIAGNOSTIC



MANUFACTURING AND DEVELOPMENT OF CUSTOM SOLUTIONS

- High volume and high mix – low volume manufacturing
- Electro-mechanical assembly
- Advanced automation solutions



AFTER SALES PRODUCT SERVICE AND SUPPORT



**SELCOM COUNTS ON OVER 40 YEARS OF EXPERIENCE & KNOW-HOW WITH
TOP PLAYERS IN DIVERSIFIED MARKETS**

RANGE OF INDUSTRIES SERVED

HOME & PROFESSIONAL APPLIANCE

- Control Units / Embedded Solutions
- HMI Solutions
- Drives Power Converters
- Components Safety Devices
- Communication and Wireless Application

ELECTRIC MOBILITY

- Control Units / Embedded Solutions
- HMI Solutions
- Drives Power Converters
- Body Electronics
- Powertrain, Car Infotainment
- Battery Management Systems
- Energy Recovery System
- Communication and Wireless Application

BATTERY MANAGEMENT SYSTEM



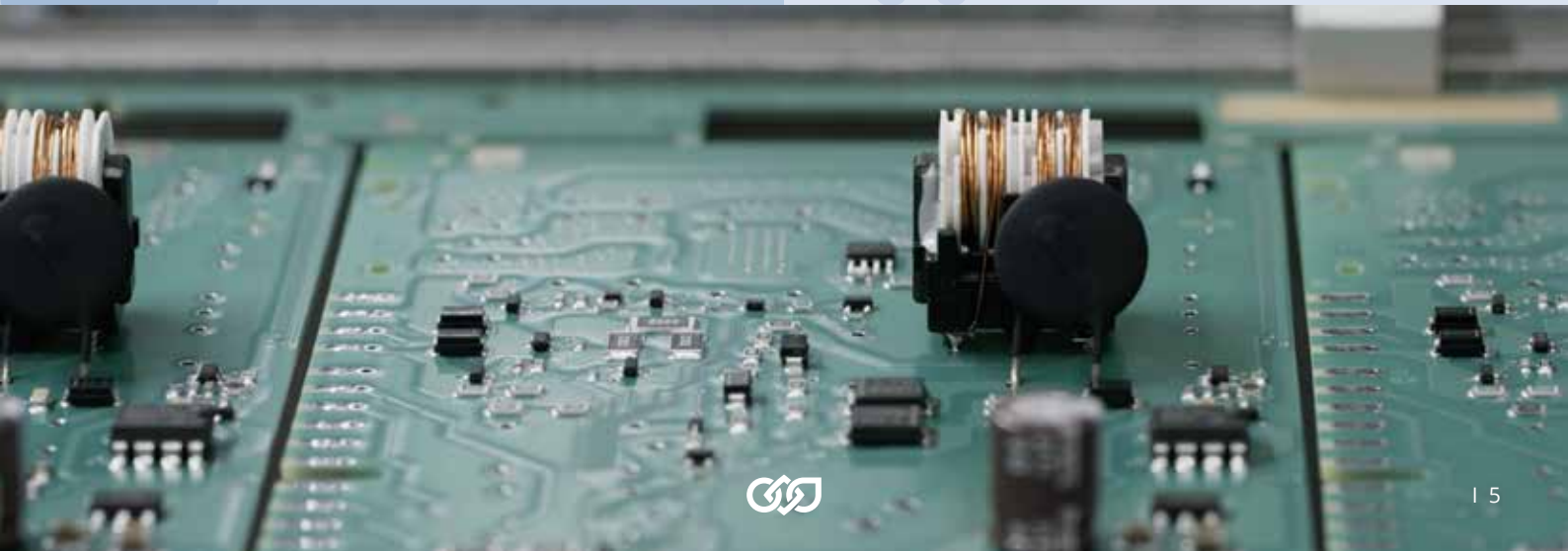
- Power Conversion
- Battery Protection
- Control Techniques
- Battery Management System
- Fuel Cells for Battery Applications

INDUSTRIAL SOLUTIONS

- Control Units / Embedded Solutions
- HMI Solutions
- Drives Power Converters
- Cabinets and Equipment
- Battery Management Systems

BIOMEDICAL & WELLNESS

- Control Units / Embedded Solutions
- HMI Solutions
- Drives Power Converters
- Battery Management



WHAT WE OFFER

HOME &
PROFESSIONAL
APPLIANCE



HARDWARE & PCB DESIGN

ELECTRIC
MOBILITY



PLC + HMI PROGRAMMING

FIRMWARE/SOFTWARE
PROGRAMMING
AND DESIGN

INDUSTRIAL
SOLUTIONS



MECHANICAL DESIGN

TESTING

BIOMEDICAL &
WELLNESS



DOCUMENTATION AND
OBsolescence MANAGEMENT

BATTERY
MANAGEMENT
SYSTEM



VALIDATION AND
CERTIFICATIONS MANAGEMENT

SKILLS AND EXPERTISE

HOME & PROFESSIONAL APPLIANCE

- Artificial Intelligence & Sensors
- HMI aesthetic interfaces
- Sterilization methods



ELECTRIC MOBILITY

- Electrical motor control
- Wall Box Charger
- Battery Pack Diagnosis



INDUSTRIAL SOLUTIONS

- Predictive Diagnosis
- High Frequency Power Techniques



BIOMEDICAL & WELLNESS

- Smart appliances
- Sensor monitoring
- HMI Display



INDUSTRIAL SOLUTIONS

KEY COMPETENCES AND EXPERTISE

- Siemens WinCC
- Rockwell RsView Studio
- Wonderware InTouch
- Movicon

HMI

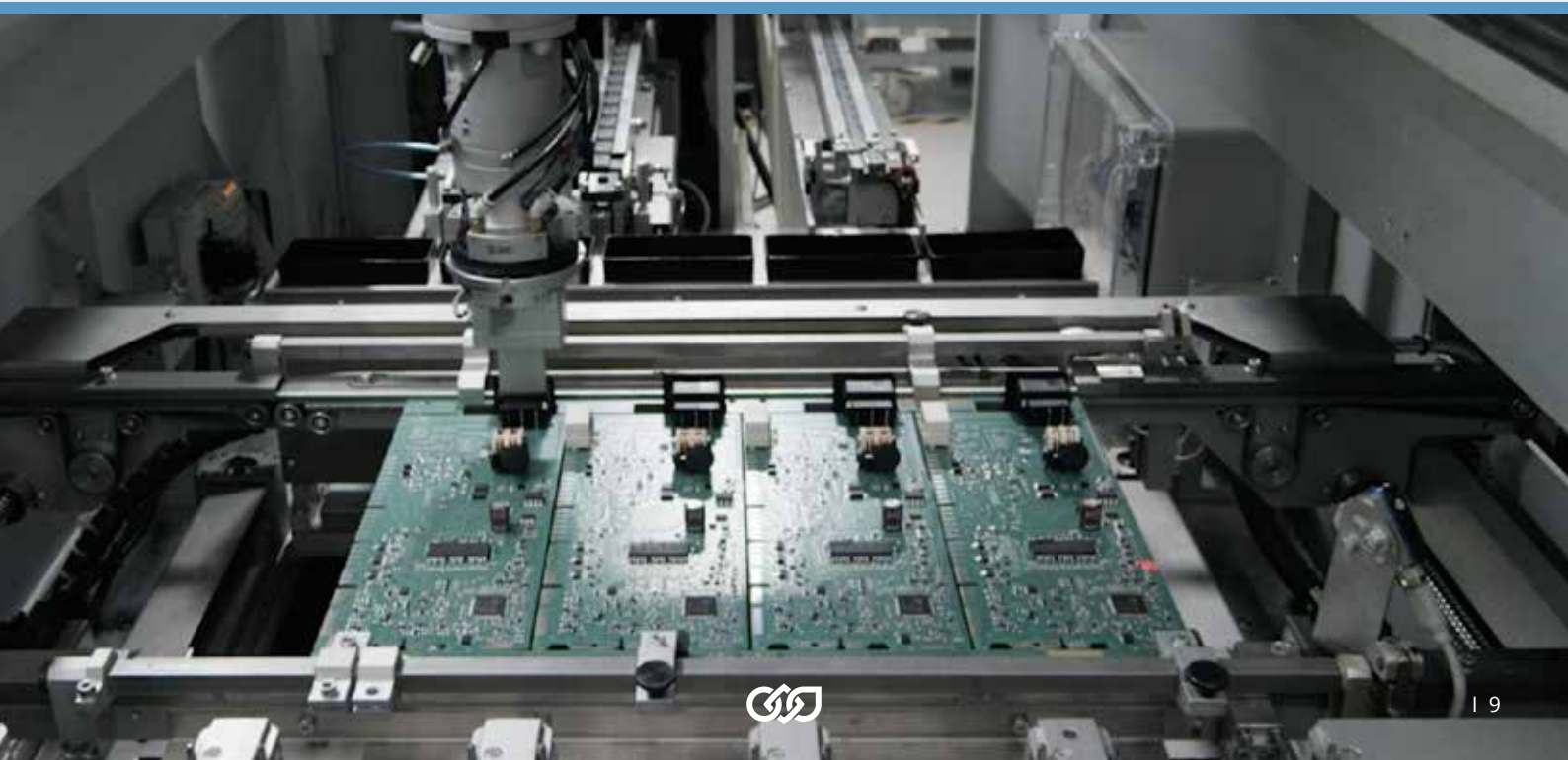
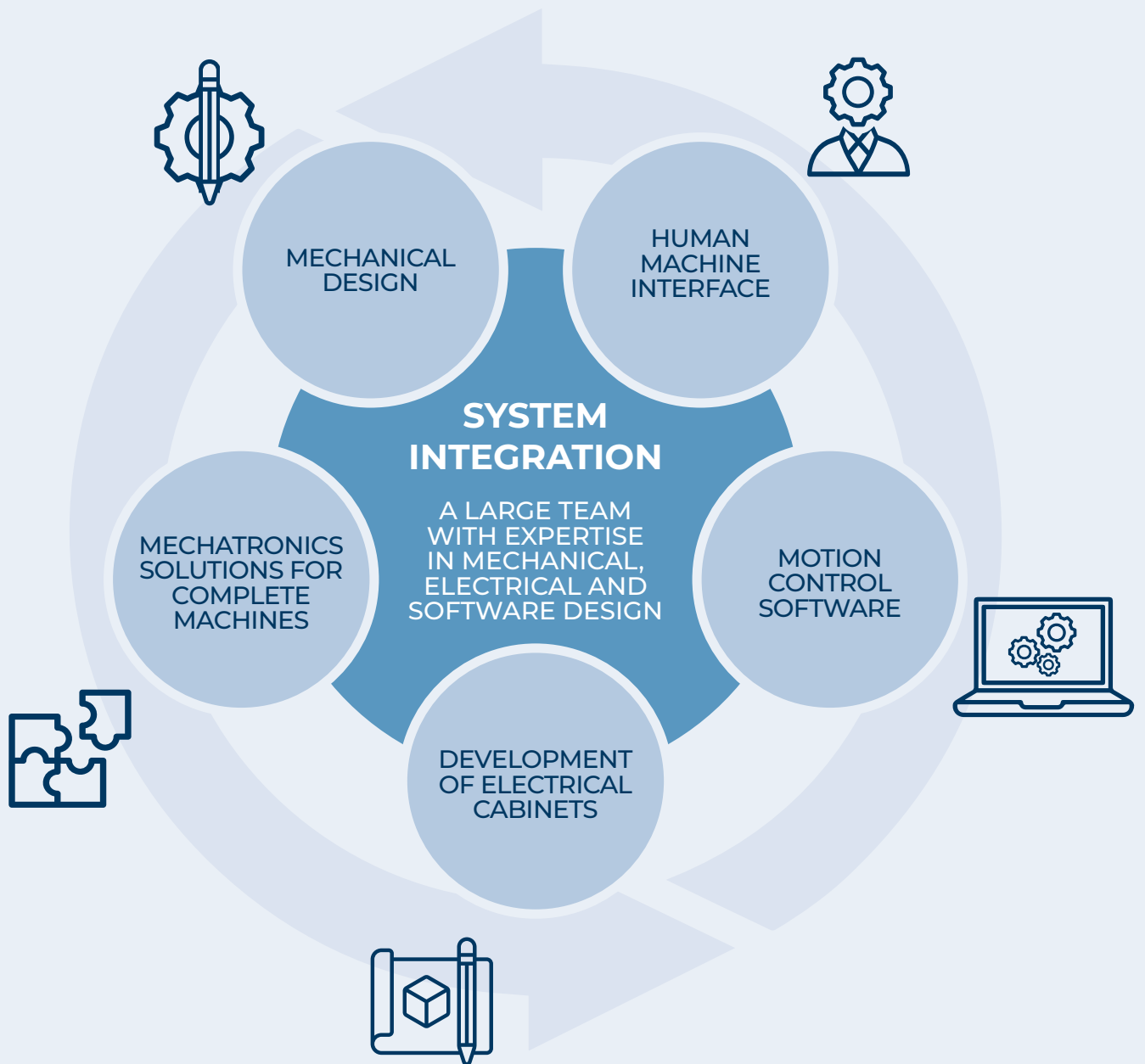
- Siemens
- Allen-Bradley
- GE Fanuc
- Mitsubishi
- Beckhoff
- Schneider
- Bosch Rexroth

PLC - MOTION

- Eplan 5,xx and P8
- Solidworks
- Pro/E/ PTC Creo
- SolidEdge
- AutoCAD

C.A.D.





OUR PRESENCE

ITALY

Selcom Group S.p.A.

Via Achille Grandi, 5
40013 Castel Maggiore (BO)
Tel. +39 051 6387111



Via Marino Serenari, 18
40013 Castel Maggiore (BO)
Tel. +39 051 6387111



Via Cadriano, 19
40057 Cadriano (BO)
Tel. +39 051 6387111



CHINA

Selcom Electronics (Shanghai) Co., Ltd

A7, No.5399, Waiqingsong Road, QingPu District,
201707 Shanghai
Tel. +86 21 6010 8100



A24, No.5399, Waiqingsong Road, QingPu District,
201707 Shanghai
Tel. +86 21 6010 8100



PRODUCTION



ASSEMBLY

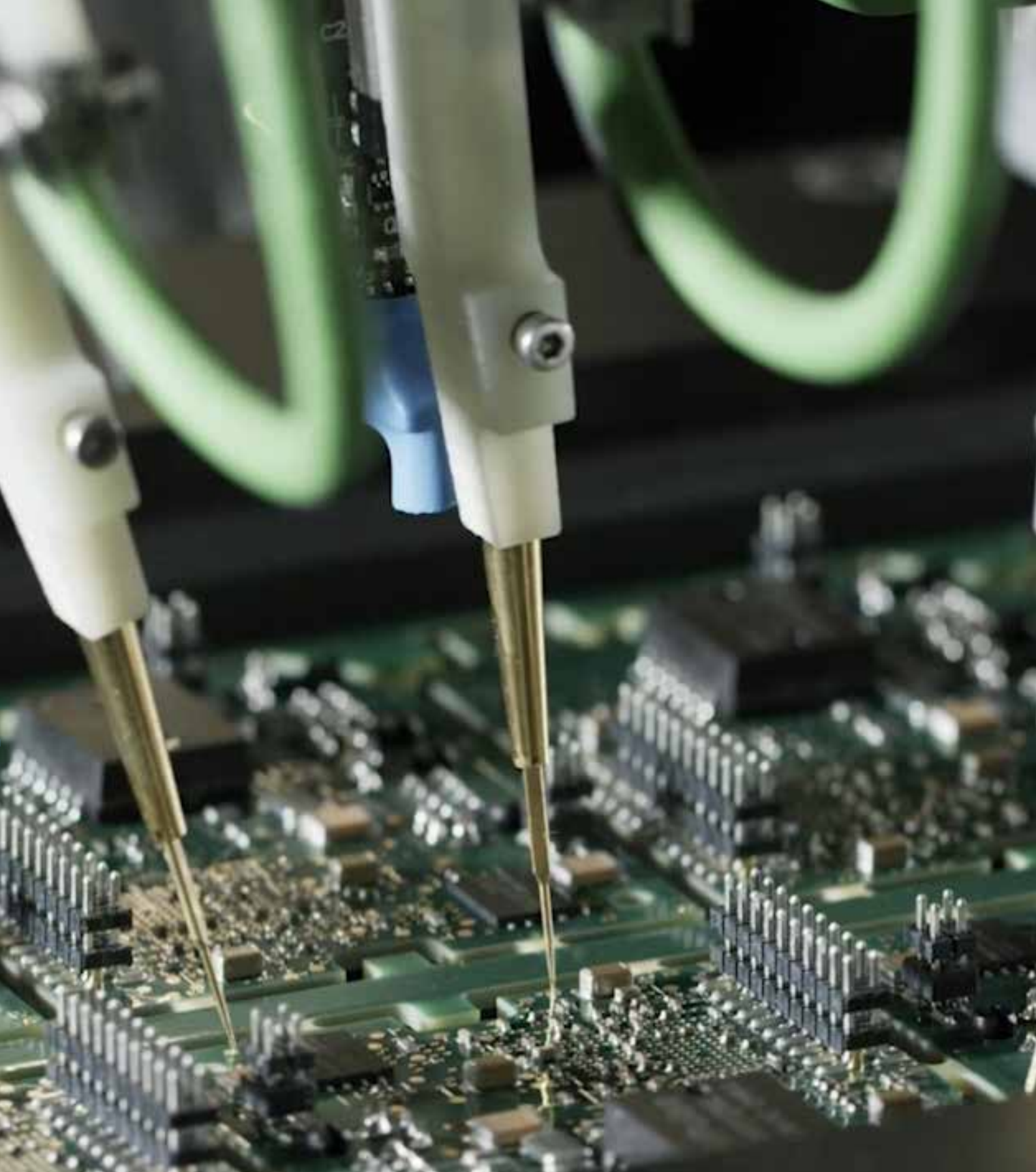


SALES



SERVICE





Selcom

A BONFIGLIOLI COMPANY



We have a relentless commitment to excellence, innovation & sustainability. Our team creates, distributes and services world-class power transmission & drive solutions to keep the world in motion.

HEADQUARTERS

Bonfiglioli S.p.A

Via Cav. Clementino Bonfiglioli, 1
40012 Calderara di Reno - Bologna (Italy)
Tel. +39 051 6473111

