

A photograph of a large industrial water treatment facility. In the background, there are several large, cylindrical storage tanks, one of which is white and the others are grey. A long, elevated walkway with metal railings extends from the tanks towards the foreground. The facility is situated near a body of water, which reflects the sky and the structures. The sky is blue with scattered white clouds. In the foreground, there is a blue metal structure, possibly part of a filtration or aeration system, with a grid-like surface.

Solutions for
**WATER
TREATMENT**

 **Bonfiglioli**

EFFICIENT AND COMPACT SOLUTIONS FOR WATER TREATMENT

From desalination to purification, the water & wastewater sector is complex and requires reliable solutions to ensure the uninterrupted flow of operations.

With a full portfolio of automation products, Bonfiglioli is able to offer efficient solutions for any kind of application in support of wastewater treatment plants. Easy maintenance, adaptability, compactness and high torque values are other fundamental features required for water and wastewater processes.

Perfect control of the drive speed, the water flow and pressure are key elements allowing us to supply our customers with energy saving solutions for the pumps, conveyors and filters typically used in this sector.

Bonfiglioli has all the experience needed to support the following water treatment processes:



Water Screening process

Page 4 to 7



Wastewater & Sludge treatment

Page 8 to 11

Pre-Sales & After Sales Services:



Pre-Sales support and co-engineering (gears and bearings lifetime calculation according to required standards, load verifications etc.)



Tailored service and warranty plans



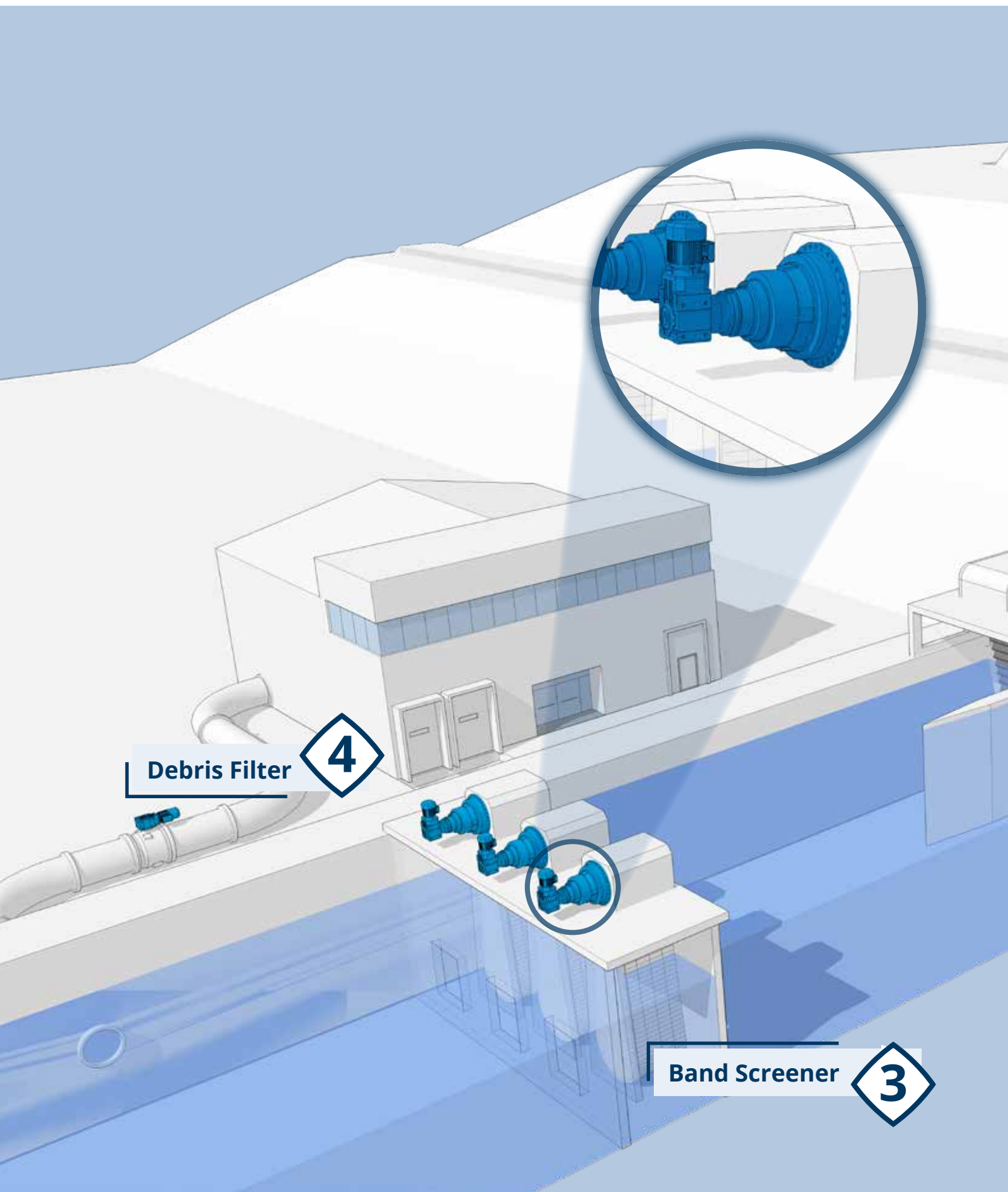
Tailored solution as per Customer needs (special output shaft design and auxiliar devices like brakes, couplings etc.)



Discover all processes of the Water & Wastewater industry:

- Water-Gate
 - Flap Gate
 - Flum Gate
 - Roller Gate
- Trash Rake
 - Rack and pinion Trash Rake
 - Chain Trash Rake
 - Cable Trash Rake
- Band Screener
- Debris Filter
- Thickener & Clarifier
- Anaerobic Digester
- Screw Press
- Aerator
 - Vertical low speed Aerator
 - Paddle Aerator

EXAMPLES OF SOLUTIONS WE OFFER
WATER SCREENING PROCESS



Debris Filter

4

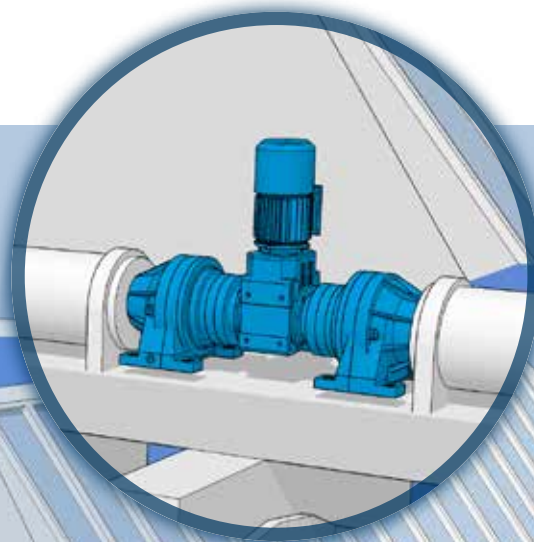
Band Screener

3

1

Water-Gate

- Flap Gate •
- Flum Gate •
- Roller Gate •



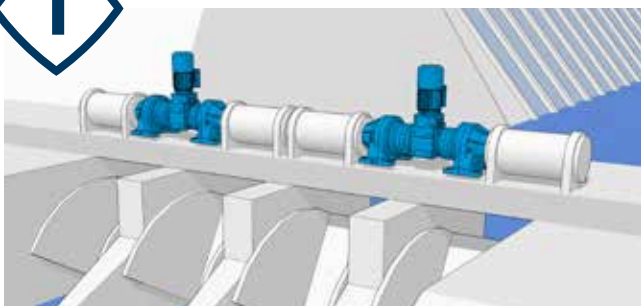
2

Trash Rake

- Rack and pinion Trash Rake
- Chain Trash Rake
- Cable Trash Rake

Examples of solutions we offer **WATER SCREENING PROCESS**

1



Water Gate **Solutions**

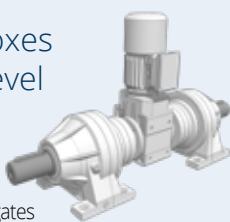
3/A/3 - Planetary gearboxes combined with helical bevel geared motor

BENEFITS

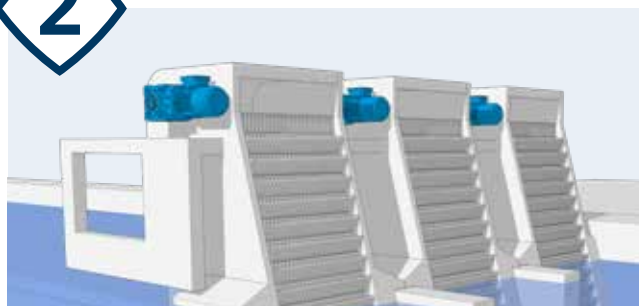
- Also suitable for high torque application gates
- Easy to match the application's required speed
- Easy installation even in tight spaces (simplified maintenance)
- Suitable for pinion/chain transmission

FEATURES

- Nominal Torque up to 1300 kNm
- Wide ratio range (300+combined)
- Modular design
- High radial load capability on output shaft



2



Trash Rake **Solutions**

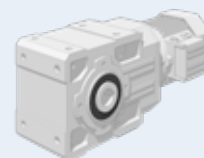
A - Helical bevel geared motor

BENEFITS

- Effective use of space
- Easy maintenance
- Mounting flexibility

FEATURES

- Right angle layout
- Wide torque range
- Oil expansion tank (TBV)
- Several output options



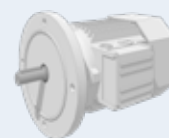
BSR - Synchronous Reluctance Motors

BENEFITS

- High dynamics
- Reduced total cost of ownership (TCO)
- Reliability and Robustness
- Space savings

FEATURES

- Power range: 0.37 to 18.5 kW
- IE4 Efficiency class or High output
- Low rotor inertia
- Low heat dissipation
- High speed range: 0 to 4500 rpm (max)
- High torque at zero speed



Active Cube - Premium Inverter

BENEFITS

- Multi-drive synchronization & torque control
- Drive Control is highly customizable
- Extremely compact

FEATURES

- Power range: 0.25 to 400 kW (parallel connection: up to 1200 kW)
- Electric shaft with master/slave configuration (Systembus)
- Master & slave control & communication protocol
- PLC with integrated functionality
- Optional: Water cooling, IP 54 cabinet



GEARBOXES & GEARED MOTORS OPTIONS:

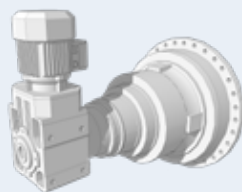
Motor anticondensate heaters and tropicalized windings, Protection Degree up to IP 56, C4 or C5 surface protection according to ISO 12944-2, Energy certified motors compliant to most MEPS (Minimum Efficiency Performance Standards), Fluoroelastomer and double lip seals.

3



Band Screener **Solutions**

3/A - Planetary gearbox combined with Helical bevel geared motor



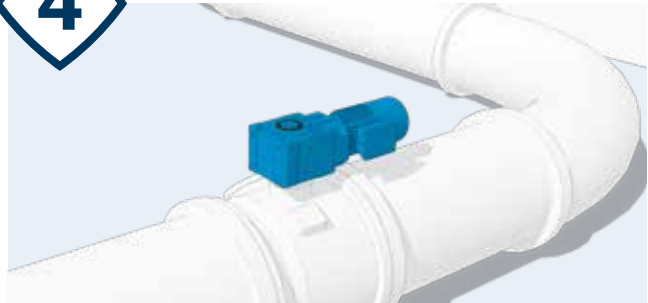
BENEFITS

- High torque transmission and power output
- High level of flexibility in layout and mounting position
- Reliable operation with vertical installation
- Space-saving solution

FEATURES

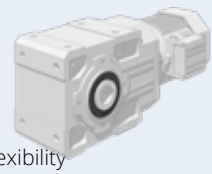
- Backstop device
- Planetary and helical bevel gear technology
- Shaft mounting
- Rain Canopy

4



Debris Filter **Solutions**

A - Helical bevel geared motor



BENEFITS

- High layout and mounting position flexibility
- Easy installation
- Energy Saving
- Cost Effective

FEATURES

- Shaft mounting
- Torque arm
- High Efficiency
- Shrink disc shaft coupling

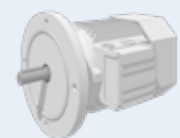
BSR - Synchronous Reluctance Motors

BENEFITS

- High dynamics
- Reduced total cost of ownership (TCO)
- Reliability and Robustness
- Space savings

FEATURES

- Power range: 0.37 to 18.5 kW
- IE4 Efficiency class or High output
- Low rotor inertia
- Low heat dissipation
- High speed range: 0 to 4500 rpm (max)
- High torque at zero speed



Active Cube - Premium Inverter

BENEFITS

- Multi-drive synchronization & torque control
- Drive Control is highly customizable
- Extremely compact

FEATURES

- Power range: 0.25 to 400 kW (parallel connection: up to 1200 kW)
- Electric shaft with master/slave configuration (Systembus)
- Master & slave control & communication protocol
- PLC with integrated functionality
- Optional: Water cooling, IP 54 cabinet



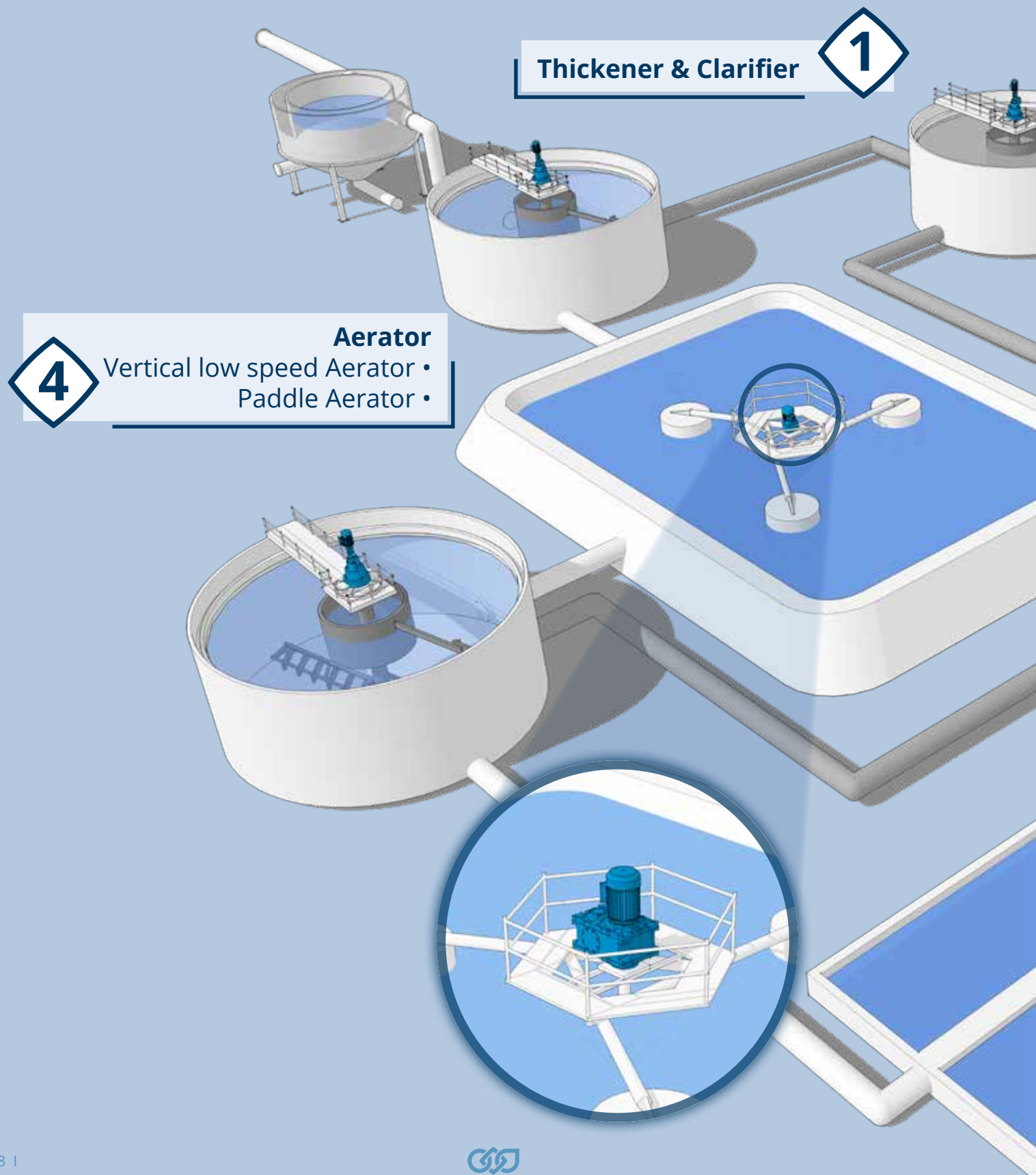
GEARBOXES & GEARED MOTORS OPTIONS:

Motor anticondensate heaters and tropicalized windings, Protection Degree up to IP 56, C4 or C5 surface protection according to ISO 12944-2, Energy certified motors compliant to most MEPS (Minimum Efficiency Performance Standards), Fluoroelastomer and double lip seals.



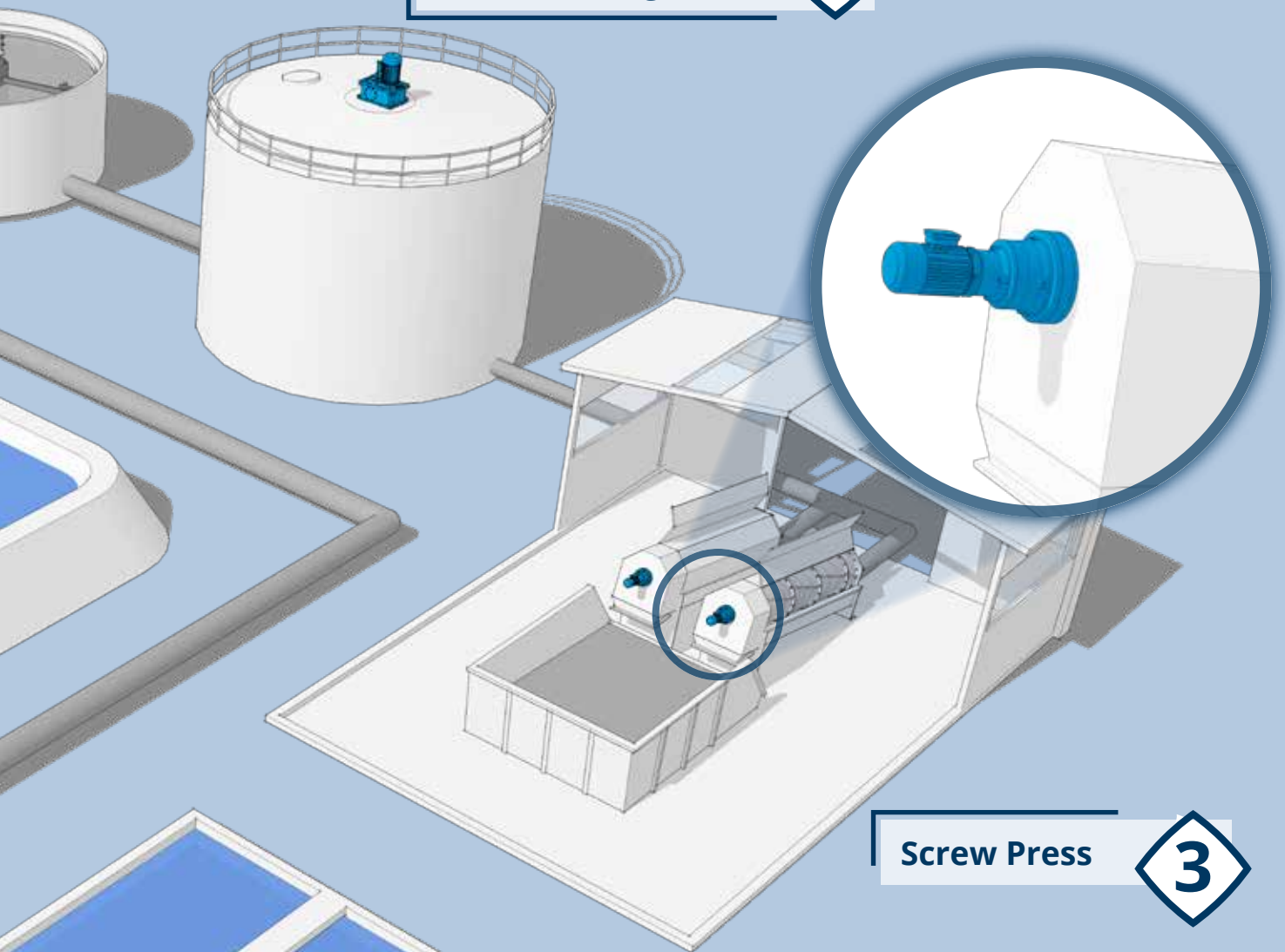
EXAMPLES OF SOLUTIONS WE OFFER

WASTEWATER & SLUDGE TREATMENT



Anaerobic Digester

2



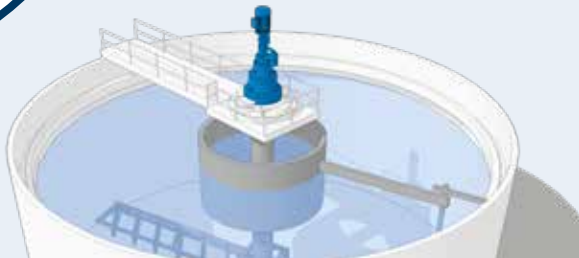
Screw Press

3

EXAMPLES OF SOLUTIONS WE OFFER

WASTEWATER & SLUDGE TREATMENT

1

Thickener & Clarifier **Solutions****300M** - Planetary gearbox and geared motor**BENEFITS**

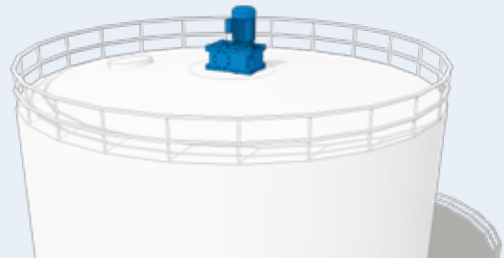
- Prevents system failures due to blade overloads
- High shock load capacity
- Compact
- Extended lifetime & reliability
- Torque control

FEATURES

- Integrated torque limiter (Combined solution with VF/W)
- Increased bearing load capability
- Integrated load cell
- Modular design
- Shock load up to 2,000,000 Nm
- Oil expansion tank & oil level switch



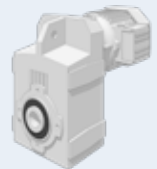
2

Anaerobic Digester **Solutions****F** - Shaft mounted geared motor**BENEFITS**

- High flexibility
- Reliable operation in tilted positions
- Easy to match the required output speed
- Safe operation in explosive environments
- No external devices needed
- No oil service required

FEATURES

- Non-standard mounting positions possible
- High ratios availability
- ATEX compliant product line (per Directive 2014/34/EU)
- Integrated torque arm
- Heater and tropicalized wiring
- Anti-condensation drain
- Small, lifetime-sealed units

**Active Cube** - Premium Inverter**BENEFITS**

- Multi-drive synchronization & torque control
- Drive Control is highly customizable
- Extremely compact

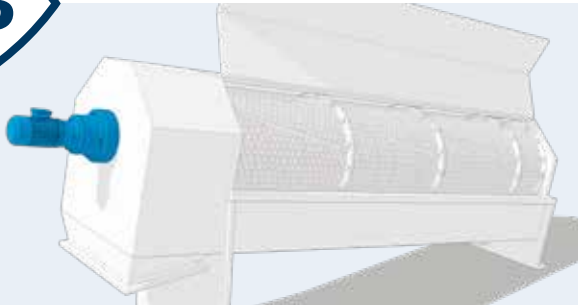
FEATURES

- Power range: 0.25 to 400 kW (parallel connection: up to 1200 kW)
- Electric shaft with master/slave configuration (Systembus)
- Master & slave control & communication protocol
- PLC with integrated functionality
- Optional: Water cooling, IP 54 cabinet

**GEARBOXES & GEARED MOTORS OPTIONS:**

Motor anticondensate heaters and tropicalized windings, Protection Degree up to IP 56, C4 or C5 surface protection according to ISO 12944-2, Energy certified motors compliant to most MEPS (Minimum Efficiency Performance Standards), Fluoroelastomer and double lip seals.

3



Screw Press **Solutions**

300M - Planetary gearbox and geared motor

BENEFITS

- Simple to match the required screw speed
- Easy to install
- High axial and radial load capacity
- High torque output
- Compact
- Highly flexible

FEATURES

- Wide Torque & Ratio Range
- Wide range of possible mounting configurations
- Wide range of accessories (shrink disk output flange...)
- High-performance output bearings
- Torque arm
- High torque density
- Modular: Ratio group set can be changed separately



4



Aerator **Solutions**

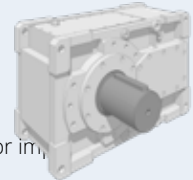
HDP - Heavy duty geared motor (Helical-Parallel)

BENEFITS

- Direct and reliable coupling with aerator impeller
- High power output
- Minimized oil contamination risk
- High reliability
- Long oil service interval

FEATURES

- Reinforced bearing and extended span on output shaft
- Wide range of cooling options
- Drywell
- Special breathers
- 14 gearbox sizes
- Modular design



Active Cube - Premium Inverter

BENEFITS

- Multi-drive synchronization & torque control
- Drive Control is highly customizable
- Extremely compact

FEATURES

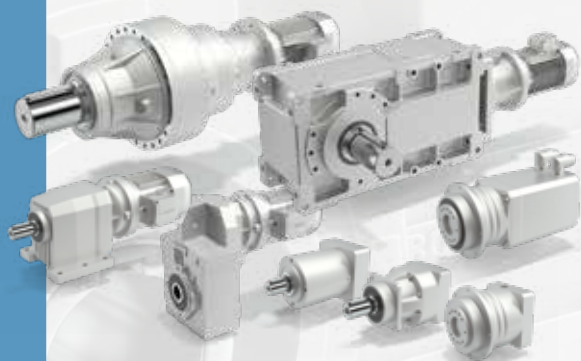
- Power range: 0.25 to 400 kW (parallel connection: up to 1200 kW)
- Electric shaft with master/slave configuration (Systembus)
- Master & slave control & communication protocol
- PLC with integrated functionality
- Optional: Water cooling, IP 54 cabinet



GEARBOXES & GEARED MOTORS OPTIONS:

Motor anticondensate heaters and tropicalized windings, Protection Degree up to IP 56, C4 or C5 surface protection according to ISO 12944-2, Energy certified motors compliant to most MEPS (Minimum Efficiency Performance Standards), Fluoroelastomer and double lip seals.

COMPLETE SOLUTIONS FOR POWER TRANSMISSION & AUTOMATION



Gearboxes & Geared motors

Motors

HEAVY DUTY

- **Heavy duty parallel/right angle shaft geared motors**
HDP/HDO Series
Torque range: 13 to 7,100 Nm
Gear ratios: 7 to 10,000
- **Planetary geared motors** | **300 Series**
Torque range: 1,250 to 1,287,000 Nm
Gear ratios: 3.4 to 5,234

- **Asynchronous IEC Motor** | **BN, BE, BX Series**
Asynchronous Compact Motors | **MN, ME, MX Series**
A complete range of AC motors, meeting worldwide MEPS (e.g. IE3)
Power range: 0.06 to 355 kW
Poles: from 2 to 8 and multiple poles

IE3

LIGHT DUTY

- **Worm geared motors** | **W/VF Series**
Torque range: 13 to 7,100 Nm
Gear ratios: 7 to 10,000
- **Helical geared motors** | **C Series**
Torque range: 45 to 12,000 Nm
Gear ratios: 2.6 to 1,481
- **Bevel-helical geared motors** | **A Series**
Torque range: 100 to 14,000 Nm
Gear ratios: 5.4 to 1,715
- **Shaft-mounted geared motors** | **F Series**
Torque range: 140 to 14,000 Nm
Gear ratios: 6.4 to 2,099

- **Asynchronous motors** | **BN, BE, BX, M, ME, MX Series**
A complete range of AC motors, meeting worldwide MEPS (e.g. IE3)
Power range: 0.06 to 355 kW
Poles: from 2 to 8 and multiple poles
- **Synchronous motors** | **BMD Series**
Stall torque: 0.85 to 60 Nm
Rated speed: from 1,600 to 6,000 min⁻¹
Power supply: 230, 400 VAC
- **Synchronous reluctance motor** | **BSR Series**
Two different versions for different needs: High efficiency IE4 and high output
Power range: 0.37 to 18.5 kW

IE3

IE4

SERVO

- **Precision planetary servo geared motors**
TQ, TQK, TQF, TR, MP, LC, LCK, SL, KR Series
Torque range: up to 1,000 Nm
Gear ratios: up to 1,000
Backlash: lower than 2 and 17 arcmin

- **Synchronous motors** | **BMD, BCR Series**
Stall torque BMD: 0.85 to 60 Nm
Stall torque BCR: 0.2 to 115 Nm
Rated speed BMD: from 1,600 to 6,000 min⁻¹
Rated speed BCR: from 2,000 to 4,500 min⁻¹
Power supply: 230, 400 VAC
- **Synchronous motors with integrated drives** | **iBMD Series**
Stall Torque: 2.7 to 36 Nm
Rated speed: 3,000 min⁻¹
Power supply: 560 VDC



Inverters

■ Cabinet solution | Active Cube 8 IP 54

Power range: 200 up to 1,200 kW

Voltage: 400 V, 525V, 690V

■ Premium inverter | Active Cube Series

ACU210: 0,25 - 9,2 kW / 1- or 3-phase | **ACU410*:** 0,25 - 400 kW / 3-phase

ACU510*: 160 - 400 kW / 3-phase | **ACU610*:** 160 - 400 kW / 3-phase

■ Premium inverter | Active Cube Series

ACU210: 0,25 - 9,2 kW / 1- or 3-phase | **ACU410*:** 0,25 - 400 kW / 3-phase

ACU510*: 160 - 400 kW / 3-phase | **ACU610*:** 160 - 400 kW / 3-phase

■ Smart inverter | Agile Series

200V: 1-phase 0.12 up to 3 kW / 3-phase 0.25 up to 7.5 kW

400V: 0.25 up to 11 kW

■ Compact inverter | S2U Series

S2U230S--..(F) IP66: 0.2 - 2.2 kW / 1-phase

■ Servo inverter | ANG Series

ANG210: 0.25 - 9.2 kW / 1- or 3-phase | **ANG410*:** 0.25 - 400 kW / 3-phase

ANG510*: 160 - 400 kW / 3-phase | **ANG610*:** 160 - 400 kW / 3-phase

■ Premium inverter | Active Cube Series

ACU210: 0,25 - 9,2 kW / 1- or 3-phase | **ACU410*:** 0,25 - 400 kW / 3-phase

ACU510*: 160 - 400 kW / 3-phase | **ACU610*:** 160 - 400 kW / 3-phase

■ Smart inverter | Agile Series

202V: 0.12 - 3 kW / 1-phase | 0.25 - 7.5 kW / 3-phase

402V: 0.25 - 11 kW / 3-phase



HMI

■ Human Machine Interfaces | BMI Series

3 Display sizes 3.5", 7", 10.1"

True flat front panel in IP65

High resolution 480x272 up to 1,024x600 pixels

■ Human Machine Interfaces | BMI Series

3 Display sizes 3.5", 7", 10.1"

True flat front panel in IP65

High resolution 480x272 up to 1,024x600 pixels

■ Human Machine Interfaces | BMI Series

3 Display sizes 3.5", 7", 10.1"

True flat front panel in IP65

High resolution 480x272 up to 1,024x600 pixels

* up to 1200 kW with parallel connection



OUR GLOBAL PRESENCE

Thanks to an international network of closely interconnected commercial and production sites, we can guarantee the same high standards of Bonfiglioli quality anywhere at any given time. We know that our direct presence in local markets is the key to long-lasting success, so our family includes 20 production sites, 26 commercial sites and more than 550 distributors around the world.

Our organization is always close by, offering complete and efficient solutions and supporting our customers with dedicated services, co-engineering and after-sales assistance.



20
PRODUCTION SITES



26
COMMERCIAL SITES



80
COUNTRIES



550
DISTRIBUTORS



~4.700
PEOPLE

AUSTRALIA

Bonfiglioli Transmission (Aust.) Pty Ltd
2, Cox Place Glendenning NSW 2761
Locked Bag 1000 Plumpton NSW 2761
Tel. +61 2 8811 8000



BRAZIL

Bonfiglioli Redutores do Brasil Ltda
Av. Osvaldo Fregonezi, 171, cjs 31 e 44
CEP 09851-015 - São Bernardo do Campo
São Paulo
Tel. +55 11 4344 2322



CHINA

Bonfiglioli Drives (Shanghai) Co. Ltd.
#68, Hui-Lian Road, QingPu District,
201707 Shanghai
Tel. +86 21 6700 2000



Motion & Robotics

#568, Longpan Road, Jiading District,
201707 Shanghai



Bonfiglioli Trading (Shanghai) Co. Ltd.
Room 423, 4th Floor, #38, Yinglun Road,
China (Shanghai) Pilot Free Trade Zone,
Shanghai



Selcom Electronics (Shanghai) Co., Ltd
A7, No.5399, Waiqingsong Road, QingPu
District,
201707 Shanghai
Tel. +86 21 6010 8100



A24, No.5399, Waiqingsong Road, QingPu
District,
201707 Shanghai
Tel. +86 21 6010 8100



FRANCE

Bonfiglioli Transmission S.A.S.
14 Rue Eugène Pottier
Zone Industrielle de Moimont II
95670 Marly la Ville
Tel. +33 1 34474510



GERMANY

Bonfiglioli Deutschland GmbH
Sperberweg 12 - 41468 Neuss
Tel. +49 0 2131 2988 0



Bonfiglioli Vectron GmbH

Europark Fichtenhain B6 - 47807 Krefeld
Tel. +49 0 2151 8396 0



O&K Antriebstechnik GmbH
Ruhrallee 8-12 - 45525 Hattingen
Tel. +49 0 2324 2050 1



INDIA

Bonfiglioli Transmission Pvt. Ltd.
Mobility & Wind Industries
AC 7 - AC 11 Sidco Industrial Estate
Thirumudivakkam Chennai - 600 044
Tel. +91 844 844 8649



**Discrete Manufacturing &
Process Industries - Motion & Robotics**
Survey No. 528/1,
Perambakkam High Road Mannur Village,
Sriperumbudur Taluk Chennai - 602 105
Tel. +91 844 844 8649



**Discrete Manufacturing &
Process Industries**
Plot No.A-9/5, Phase IV MIDC Chakan,
Village Nighoje Pune - 410 501
Tel. +91 844 844 8649



ITALY

Bonfiglioli Riduttori S.p.A.
**Discrete Manufacturing &
Process Industries**
Via Cav. Clementino Bonfiglioli, 1
40012 Calderara di Reno
Tel. +39 051 6473111



**Discrete Manufacturing &
Process Industries**
Via Sandro Pertini, lotto 7b
20080 Carpiano
Tel. +39 02985081



**Discrete Manufacturing &
Process Industries**
Via Saliceto, 15 - 40010 Bentivoglio



Mobility & Wind Industries
Via Enrico Mattei, 12 Z.I. Villa Selva
47122 Forlì
Tel. +39 0543 789111



Motion & Robotics
Via Unione, 49 - 38068 Rovereto
Tel. +39 0464 443435/36



Selcom Group S.p.A.
Via Achille Grandi, 5
40013 Castel Maggiore (BO)
Tel. +39 051 6387111



Via Marino Serenari, 18
40013 Castel Maggiore (BO)
Tel. +39 051 6387111



Via Cadriano, 19
40057 Cadriano (BO)
Tel. +39 051 6387111



NEW ZEALAND

Bonfiglioli Transmission (Aust.) Pty Ltd
88 Hastie Avenue, Mangere Bridge,
2022 Auckland
PO Box 11795, Ellerslie
Tel. +64 09 634 6441



SINGAPORE

Bonfiglioli South East Asia Pte Ltd
8 Boon Lay Way, #04-09,
8@ Tadehub 21, Singapore 609964
Tel. +65 6268 9869



SLOVAKIA

Bonfiglioli Slovakia s.r.o.
Robotnícka 2129
Považská Bystrica, 01701 Slovakia
Tel. +421 42 430 75 64



SOUTH AFRICA

Bonfiglioli South Africa Pty Ltd.
55 Galaxy Avenue, Linbro Business Park,
Sandton, Johannesburg
2090 South Africa
Tel. +27 11 608 2030



SPAIN

Tecnotrans Bonfiglioli S.A
Avinguda del Ferrocarril, nº 14,
Polígono Industrial Can Estapé
08755 Castellbisbal - Barcelona
Tel. +34 93 447 84 00



TURKEY

Bonfiglioli Turkey Jsc
Atatürk Organize Sanayi Bölgesi,
10007 Sk. No. 30
Atatürk Organize Sanayi Bölgesi,
35620 Çiğli - İzmir
Tel. +90 0 232 328 22 77



UNITED KINGDOM

Bonfiglioli UK Ltd.
Unit 1 Calver Quay, Calver Road, Winwick
Warrington, Cheshire - WA2 8UD
Tel. +44 1925 852667



USA

Bonfiglioli USA Inc.
3541 Hargrave Drive
Hebron, Kentucky 41048
Tel. +1 859 334 3333



VIETNAM

Bonfiglioli Vietnam Ltd.
Lot C-9D-CN My Phuoc Industrial Park 3
Ben Cat - Binh Duong Province
Tel. +84 650 3577411





We have a relentless commitment to excellence, innovation & sustainability. Our team creates, distributes and services world-class power transmission & drive solutions to keep the world in motion.

HEADQUARTERS

Bonfiglioli S.p.A

Registered office: Via Cav. Clementino Bonfiglioli, 1
40012 Calderara di Reno - Bologna (Italy)
Tel. +39 051 6473111

Head office: Via Isonzo, 65/67/69
40033 Casalecchio di Reno - Bologna (Italy)

