



ELECTRIC DRIVES FOR AGRICULTURAL ATTACHMENTS

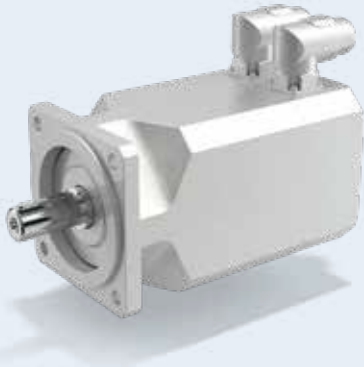
 **Bonfiglioli**

POWERING ELECTRIC AGRICULTURAL ATTACHMENTS

Bonfiglioli solutions power the next generation of agricultural attachments, ensuring precision, efficiency, and sustainability. Our drives enable accurate speed and torque control for superior performance, while delivering zero local emissions, lower noise, and higher energy efficiency. With fewer moving parts and no hydraulic oil, they reduce maintenance needs, downtime, and overall costs.



BMD MOTOR SERIES



BENEFITS

- Compact design
- High performance
- High torque in a limited space
- Reduced TCO
- Easy maintenance
- Low noise
- No polluting emissions

FEATURES

- Permanent magnet motors
- Suitable for 48-400 Vdc batteries
- Air cooled
- Aluminum housing
- Protection rating >IP65

TECHNICAL DATA

| | Rated power (kW) |
|---------|------------------|
| BMD 65 | 1.1 |
| BMD 82 | 2.0 |
| BMD 102 | 4.1 |
| BMD 118 | 5.3 |
| BMD 145 | 8.6 |
| BMD 170 | 11.3 |

BPM MOTOR SERIES



BENEFITS

- Compact design
- High performance
- High torque in a limited space
- Reduced TCO
- Easy maintenance
- Low noise
- No polluting emissions

FEATURES

- Permanent magnet motors
- Suitable for 48-400 Vdc batteries
- Air cooled
- Aluminum housing
- Protection rating >IP65

TECHNICAL DATA

| | Rated power (kW) |
|------------|------------------|
| BPM 200-L1 | 5 |
| BPM 200-L2 | 7.5 |
| BPM 200-L3 | 10 |
| BPM 200-L4 | 15 |



We have a relentless commitment to excellence, innovation & sustainability. Our team creates, distributes and services world-class power transmission & drive solutions to keep the world in motion.

HEADQUARTERS

Bonfiglioli S.p.A

Via Cav. Clementino Bonfiglioli, 1
40012 Calderara di Reno - Bologna (Italy)
Tel. +39 051 6473111

