



SOLUTIONS FOR

Agriculture
& Forestry





We engineer dreams



Contents

AGRICULTURE & FORESTRY.....	5
WHEELED AGRICULTURAL MACHINES.....	6
600 Series.....	8
600WT Series.....	10
600WE Series.....	12
TRACKED AGRICULTURE MACHINES.....	14
700C Series.....	16
FEED MIXERS.....	18
300 Series.....	20
700T Series.....	22
FORESTRY MACHINERY.....	24
700C Series - Feller bunchers and log loaders.....	26
F Series.....	28
700T Series.....	30
700C Series - Mulcher machine.....	32
700CT.....	34
WHEELED & TRACKED AGRIROBOTS.....	36
600WE Series / MP+BMD Motor Series.....	38
700CE Series / BPM Motor Series.....	39
EXTRA FEATURES.....	40
Integrated dynamic and parking brakes.....	42
Central tire inflation system.....	44
OUR GLOBAL PRESENCE.....	50

Engineering Solutions



WWW.BONFIGLIOLI.COM

Agriculture & Forestry

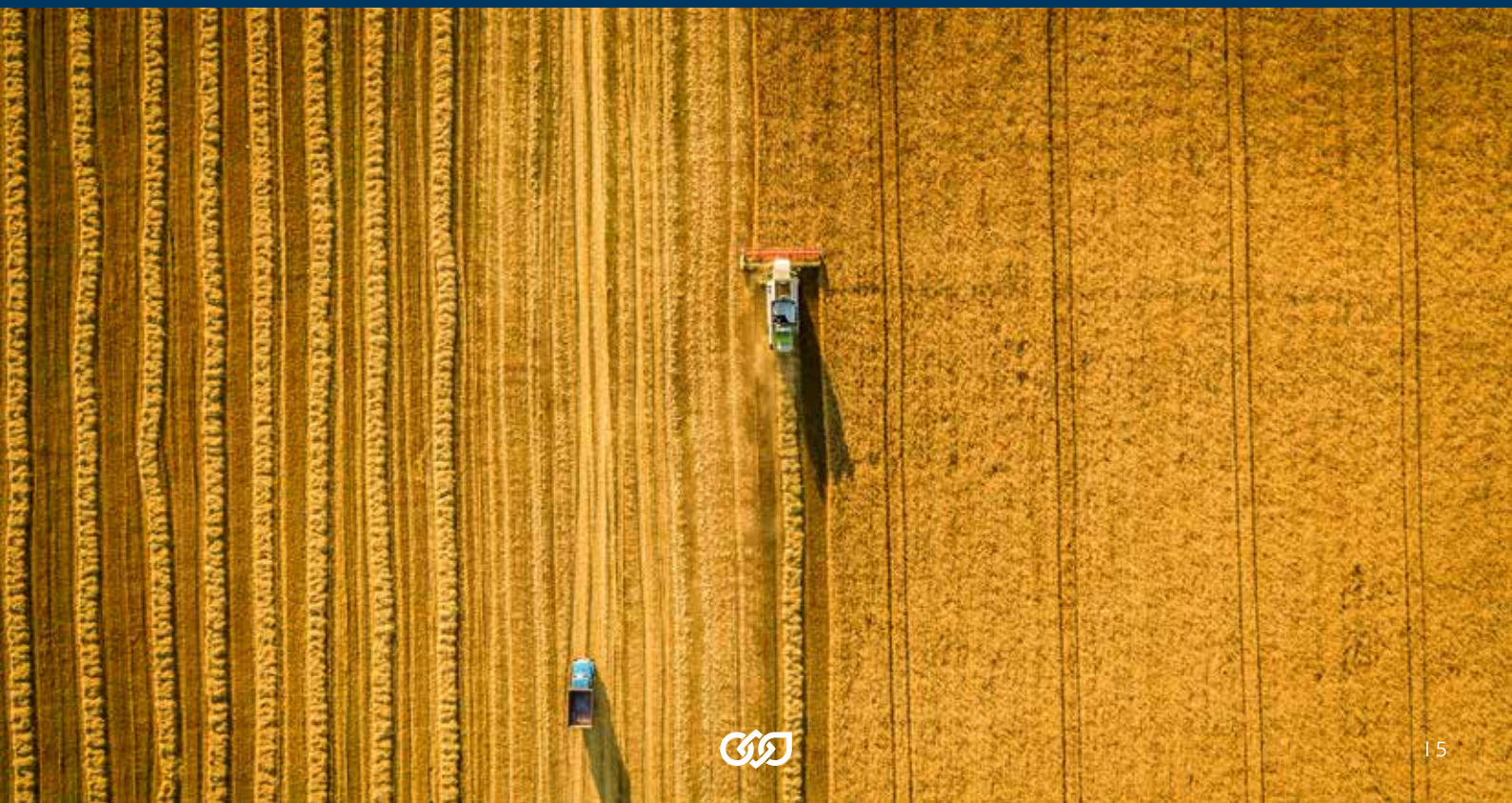
THE MOST RELIABLE SOLUTIONS FOR AGRICULTURAL AND FOREST MACHINERY

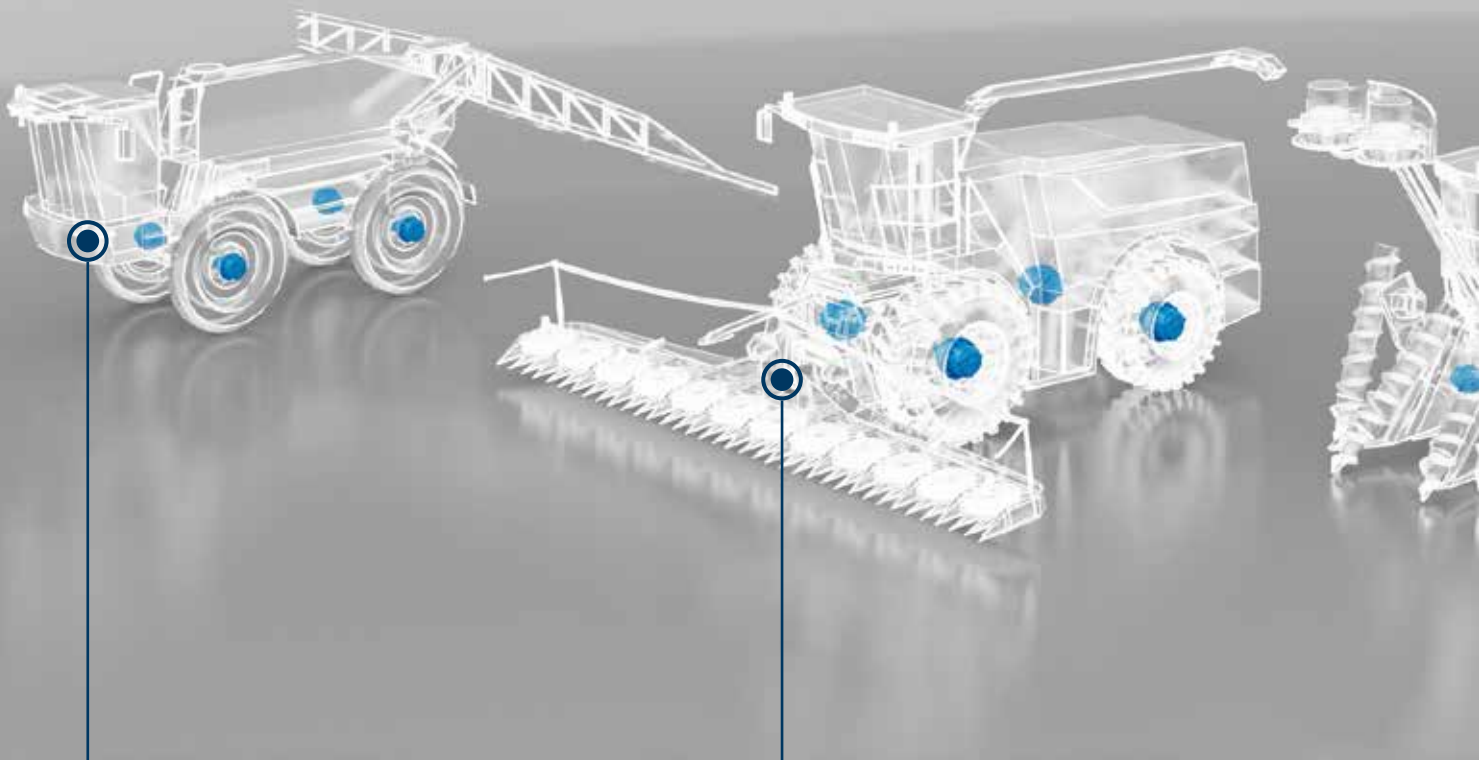
With almost 50 years of experience alongside major players on the market, Bonfiglioli is able to create, design and produce tailor-made drives for a wide range of applications in the agricultural sector, such as sprayers, harvesters, feed mixers and forest machines.

Through innovation, reliability, efficiency, cost-optimization and flexibility, Bonfiglioli experts help you to meet your customers' needs and requirements.

The vast range of customised solutions and extensive expertise in the industry make Bonfiglioli the ideal partner for all manufacturers of agricultural and forest machinery.

Furthermore Bonfiglioli offers integrated electric powerdrives replacing the conventional hydraulic application. The electrification of small AGRICULTURAL MACHINERY machines in their main functions is a first step ahead, improving efficiency, reducing CO2 emissions and noise levels.

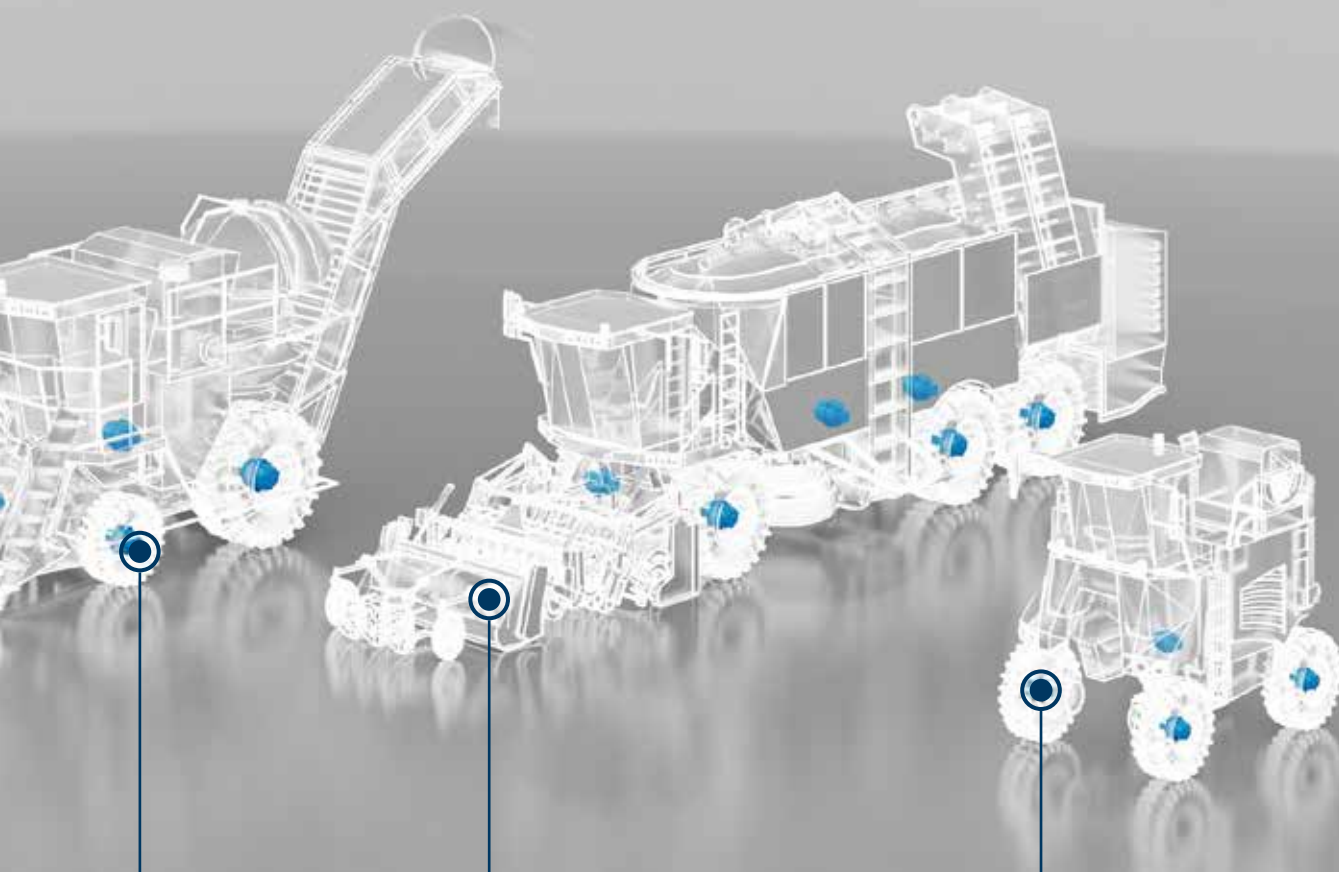




SPRAYERS



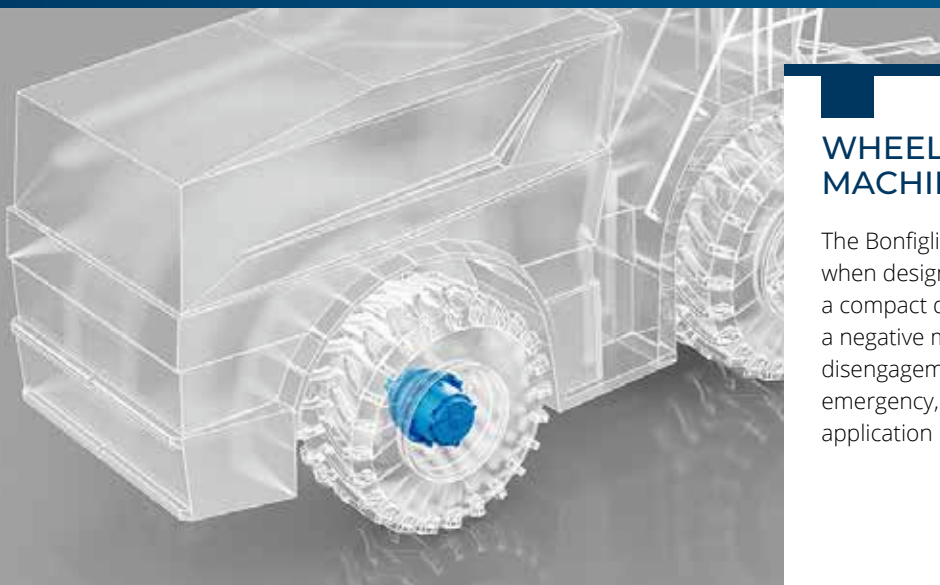
FORAGE HARVESTERS



SUGAR CANE HARVESTERS

POTATO HARVESTERS

GRAPE HARVESTERS



WHEELED AGRICULTURE MACHINES

The Bonfiglioli 600W Series is the best solution when designing wheeled off-road machinery. With a compact design, high torque and load capacities, a negative multi-disk parking brake and an optional disengagement device to tow the vehicle in an emergency, these solutions precisely match the application requirements.



600 Series Wheel drives

BENEFITS

- Rotating housing flange with studs to fit wheels and drums
- Rugged design
- High torque capacity
- High load capacity
- Mechanical lifetime seals
- Compact design
- Optional mechanical gear disengagement on request

FEATURES

- Up to 4,000 rpm
- Hydraulically released parking brake on request
- Cartridge axial piston hydraulic motors
- Flanged axial piston hydraulic motors
- Prearranged for hydraulic and electric motors
- Dynamic & service brake
- Electric version available on request



HYDRAULIC
SOLUTIONS



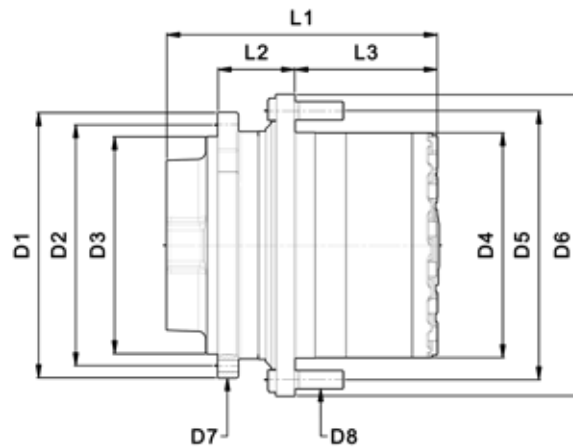
ELECTRIC
SOLUTIONS

TECHNICAL DATA

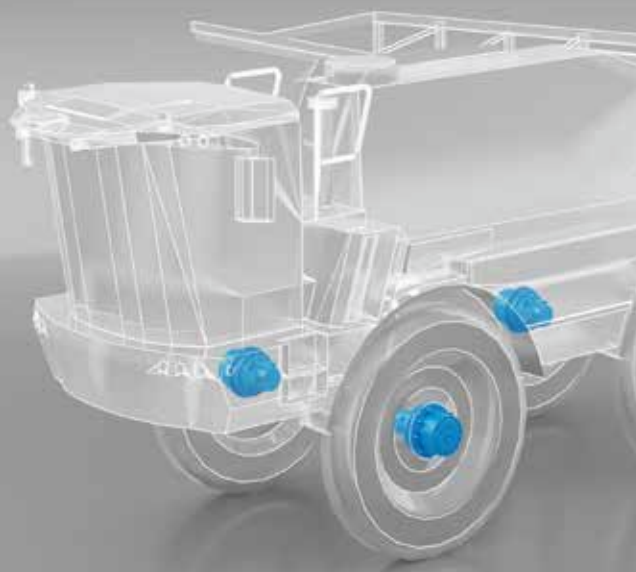
Torque (Nm)	
603 W	4,000
605 W	7,000
606 W	13,000
607 W	18,000
609 W	22,000
610 X	36,000

WHEELED AGRICULTURAL MACHINES

TYPE	RANGE OF RATIOS	MAX. INPUT SPEED	HYDRAULIC MOTOR DRIVE	MOTOR DISPLACEMENT	BRAKING TORQUE	MIN. OPENING PRESSURE	WEIGHT	MACHINE WEIGHT	DESIGN
	1:	min ⁻¹		cc/rev	Nm	bar	kg	tons	
603 W	19 ÷ 40	3,500	Axial piston motor fixed or variable displacement	28 ÷ 45	210	18	45	up to 8	B
605 W	22 ÷ 53	3,500		28 ÷ 60	220 ÷ 310	10 - 20	70	5 ÷ 8	B
606 W	20 ÷ 128	4,000		28 ÷ 80	300 ÷ 800	15 - 20	110	up to 14	A
607 W	26 ÷ 154	4,000		28 ÷ 80	300 ÷ 800	15 - 20	140	14 ÷ 18	A
609 W	22 ÷ 147	4,000		45 ÷ 160	300 ÷ 800	15 - 20	170	16 ÷ 22	A
610 X	22.5 ÷ 51.4	4,000		60 ÷ 160	800 ÷ 1.200	15 - 20	200	25 ÷ 35	A



TYPE	D1	D2	D3	D4	D5	D6	D7	D8	L1	L2	L3
603 W	270	230	190	200	245	280	M16x2 no.8	M18x1.5 no.6	230	72	128
605 W	270	230	190	220	275	310	M16x2 no.12	M20x1.5 no.8	260	72	158
606 W	330	300	270	280	335	370	M16x2 no.18	M22x1.5 no.10	330	115	200
607 W	317	285	240	300	355	400	M20x2.5 no.20	M18x1.5 no.20	335	82	233
609 W	375	340	300	350	400	435	M20x2.5 no.16	M22x1.5 no.16	350	91	243
610 X	410	370	330	360	400	440	M20x2.5 no.20	M20x2.5 no.16	383	90	268



WHEELED AGRICULTURE MACHINES

With a series of reliable products for wheeled agricultural machines, Bonfiglioli offers machine builders a range of excellent drive systems. In this version Bonfiglioli also includes its design for the high efficiency hydraulic motor TH68 in both versions (2-speed and variable speed).



600WT Series

Wheel drives

BENEFITS

- Spring-applied hydraulic-release integrated parking brake
- Faster, easier installation on the machine
- Mechanical gear disengagement

FEATURES

- Motor:
 - Integrated variable swash plate
 - Available with both hydraulic two position or electric proportional variable displacement control
 - Zero displacement capacity
- Input speed: up to 4,000 rpm
- Gear ratios: 22 ... 53
- Brake options
- Speed sensor
- Dynamic service brake with inspection port, directly serviceable from the motor side (no need to remove it from the machine)
- Main options: Dynamic & service brake



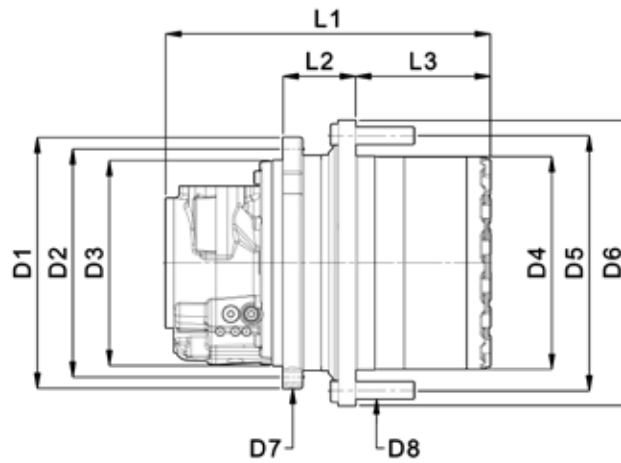
TECHNICAL DATA

Torque (Nm)

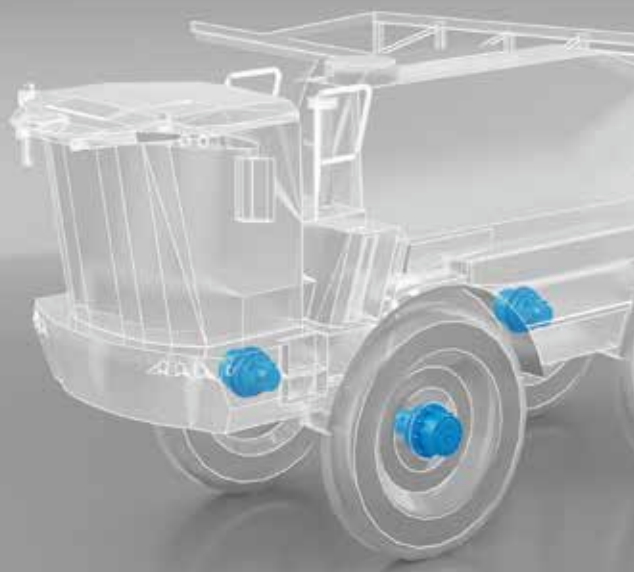
606 WT	13,000
--------	--------

WHEELED AGRICULTURAL MACHINES

TYPE	RANGE OF RATIOS	MAX. INPUT SPEED	HYDRAULIC MOTOR DRIVE	MOTOR DISPLACEMENT MIN/MAX	BRAKING TORQUE	MIN. OPENING PRESSURE	WEIGHT	MACHINE WEIGHT
	1:	rpm		cc/rev	Nm	bar	kg	tons
606 WT	23 ÷ 53	4,000		68/25	540	18	100	10 ÷ 15



TYPE	D1	D2	D3	D4	D5	D6	D7	D8	L1	L2	L3
606 WT	332	300	270	280	338	375	M16 n12	M22X1.5 n10	450	95	177



WHEELED AGRICULTURE MACHINES

Bonfiglioli's 600W planetary wheel drives can be coupled to a high-power density electric motor, instead of a conventional hydraulic motor. This complete mechatronic solution is designed for a high voltage hybrid powertrain system and was originally conceived for self-propelled crop sprayers.



600WE Series Wheel drives



BENEFITS

Benefits for OEMs

- Ability to downsize and downspeed combustion engines
- Easy installation: electric solution dimensions comparable to standard hydrostatics
- Higher system reliability, fewer mechanical parts
- Virtually maintenance-free electric motors
- From wheel bolt to electric wire with only one supplier

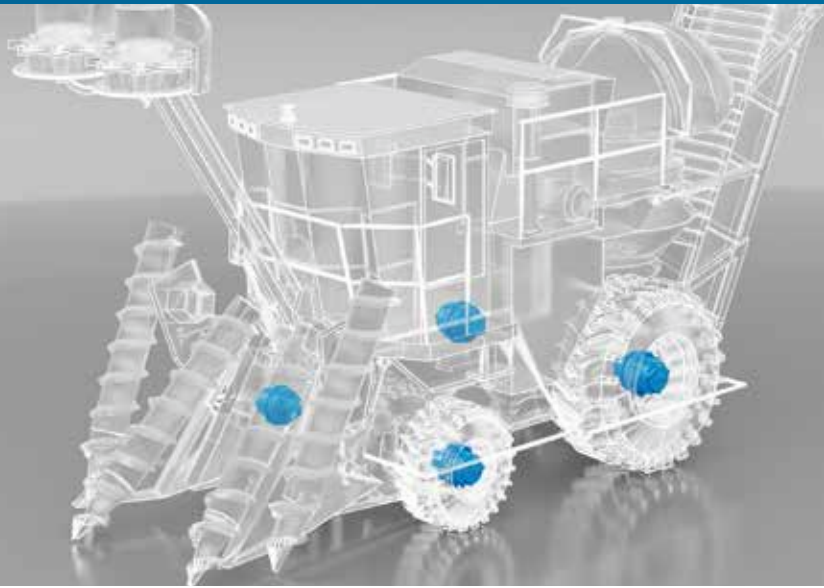
Benefits for end users

- Reduced fuel consumption
- Increased productivity
- Better machine maneuverability
- The electric solution is cleaner: lower risk of oil spills

FEATURES

- Multistage planetary gearbox
- Rotating housing output
- Validated in the field
- Low noise

- Permanent magnet motors
- Suitable for 400-800 Vdc batteries
- Liquid cooled
- Aluminum or cast iron housing
- Protection rating >IP65



TECHNICAL DATA

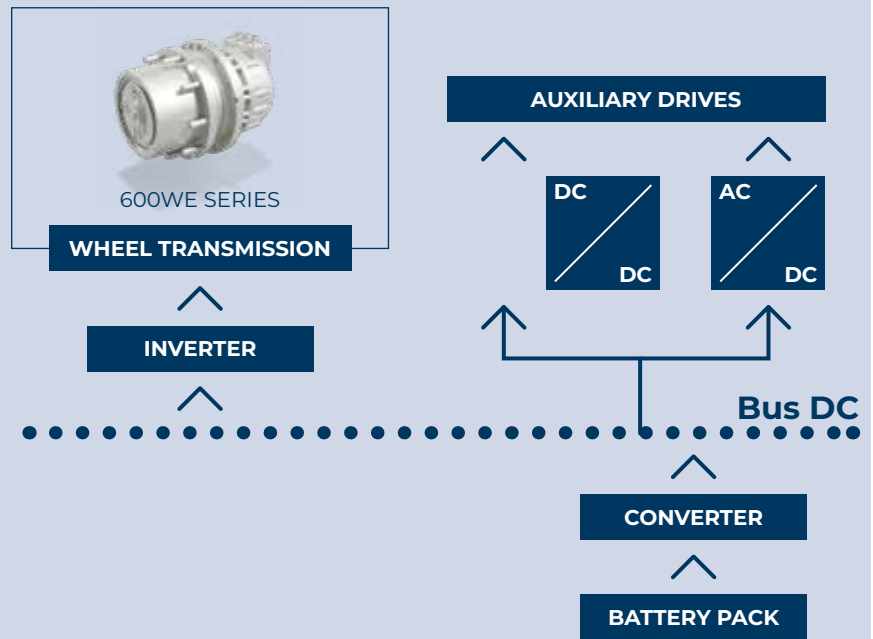
Torque (Nm)

605 W	10,000
606 W	17,000
607 W	22,000
609 W	30,000
610 W	36,000
610 X	40,000

Nominal power (kW)

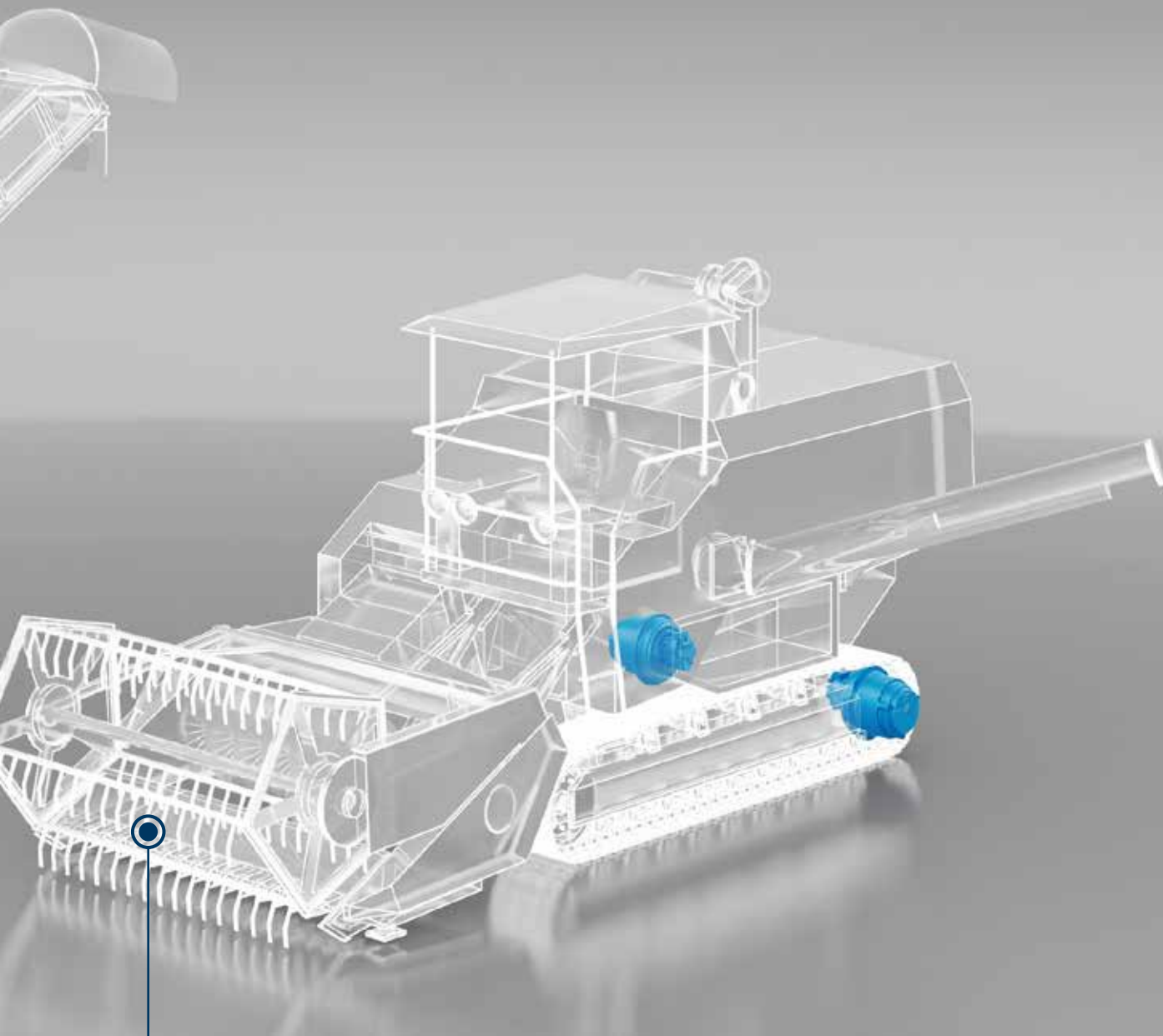
BPM 240-L4	35
BPM 240-L7	65
BPM 300-L1	100
BPM 300-L2	150

Functional diagram

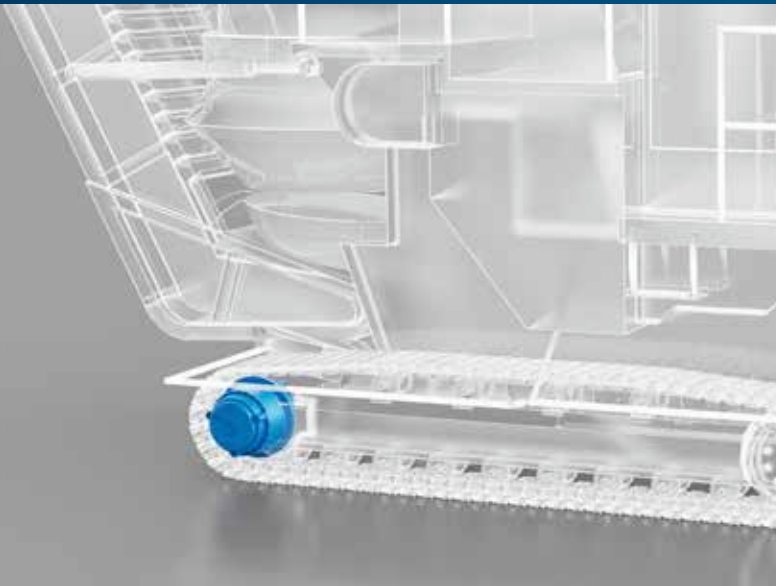




SUGAR CANE HARVESTERS



RICE HARVESTERS



TRACKED AGRICULTURAL MACHINES

Bonfiglioli 700C series units are unsurpassed by any crawler or milling machines. Thanks to their compact, rugged design, high torque and load capabilities, and optional mechanical lifetime seals, these solutions are the best possible option for the machine. All units are available with a fail-safe parking brake and most have the option of cartridge type fixed or variable systems.



700C Series Track drives

BENEFITS

- Rotating housing
- Rugged and compact design
- High torque capacity
- High load capacity
- Mechanical lifetime seals

FEATURES

- Up to 4,000 rpm
- Hydraulically released parking brake on request
- Cartridge axial piston hydraulic motors
- Flanged axial piston hydraulic motors
- Hydraulic orbit motors
- Electric version available on request

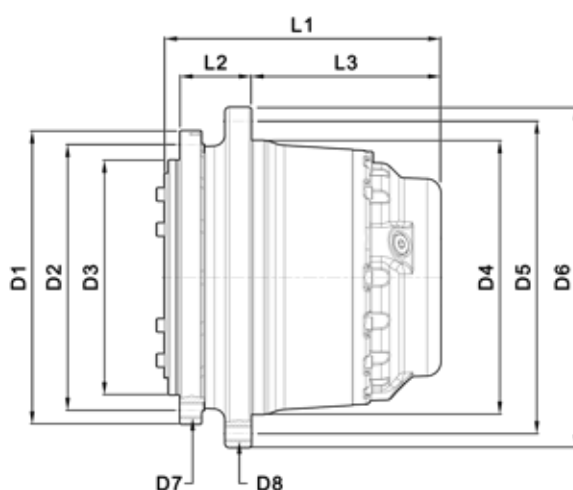


TECHNICAL DATA

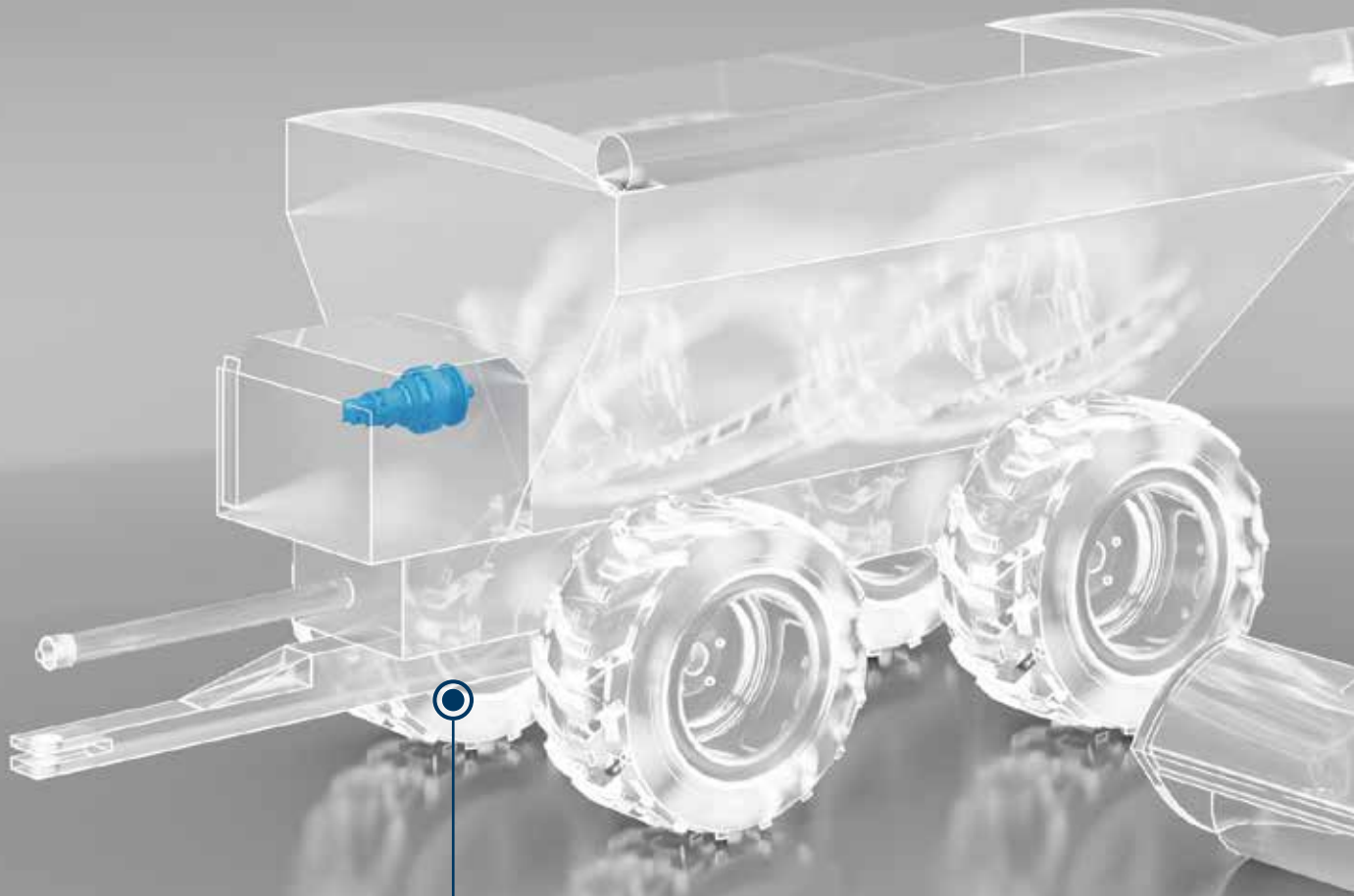
Torque (Nm)	
705 C1/2 H	7,000
706 C3 B	15,000
707 C3 B	22,000
709 C3 B	25,000
710 C3 B	35,000
711 C3 B	40,000
713 C3 B	50,000
715 C3 B	80,000
716 C3 B	95,000

TRACKED AGRICULTURAL MACHINES

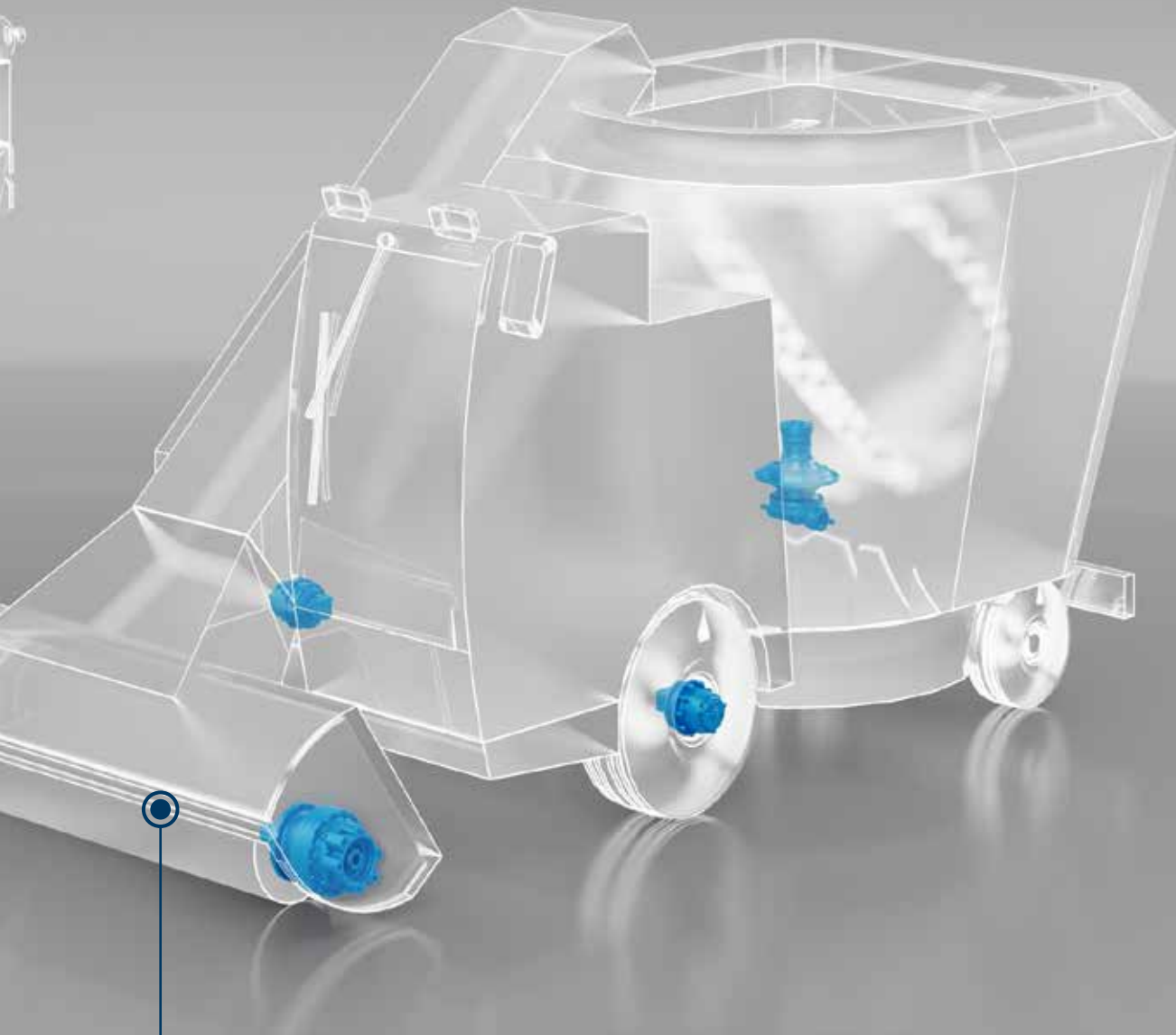
TYPE	RANGE OF RATIOS	MAX. INPUT SPEED	HYDRAULIC MOTOR DRIVE	MOTOR DISPLACEMENT	BRAKING TORQUE	MIN. OPENING PRESSURE	WEIGHT	MACHINE WEIGHT
	1:	min ⁻¹		cc/rev	Nm	bar	kg	tons
705 C1 H	5.33	1,000	Orbital motors	160 ÷ 250	250 - 500	10 - 20	80	5
705 C2 H	22 ÷ 53	4,000	Axial piston motor fixed or variable displacement	28 ÷ 60	250 - 500	10 - 20	60	5 ÷ 7
706 C3 B	68 ÷ 173	4,000		28 ÷ 80	250 - 500	10 - 20	95	7 ÷ 13
707 C3 B	55 ÷ 120	4,000		28 ÷ 80	250 - 500	10 - 20	135	13 ÷ 16
709 C3 B	55 ÷ 147	4,000		45 ÷ 160	250 - 600	10 - 20	180	16 ÷ 22
710 C3 B	55 ÷ 166	4,000		60 ÷ 160	250 - 600	10 - 20	200	22 ÷ 28
711 C3 B	71 ÷ 163	4,000		60 ÷ 160	400 - 800	10 - 20	270	28 ÷ 35
713 C3 B	56 ÷ 147	3,500		60 ÷ 160	400 - 800	10 - 20	310	35 ÷ 45
715 C3 B	62 ÷ 156	3,500		60 ÷ 160	600 - 1,000	10 - 20	350	28 ÷ 35
716 C3 B	83 ÷ 174	3,500		60 ÷ 160	800 - 1,200	10 - 20	400	35 ÷ 40



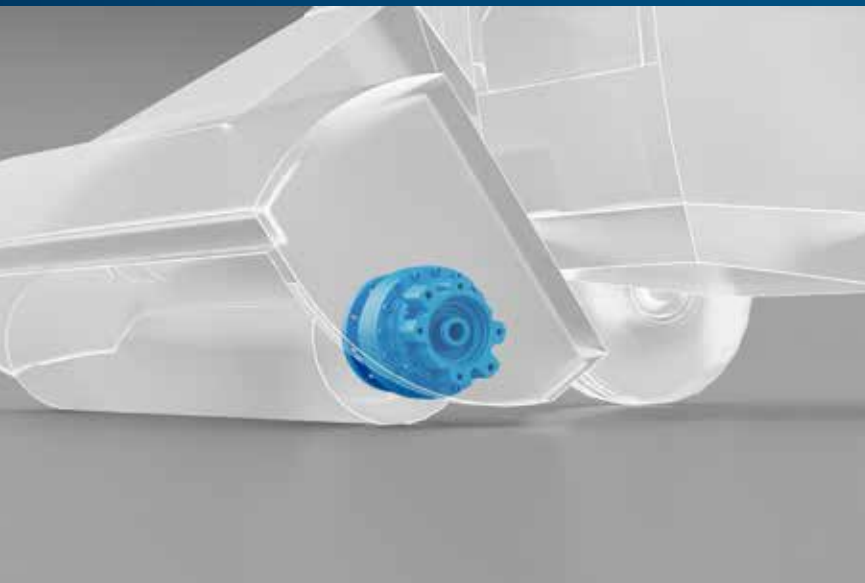
TYPE	D1	D2	D3	D4	D5	D6	D7	D8	L1	L2	L3
705 C1 H	325	290	250	200	240	280	M16x2 no.10	M20x2.5 no.8	295	72	96
705 C2 H	270	230	190	220	260	300	M16x2 no.12	M16x2 no.16	250	72	158
706 C3 B	330	300	270	280	330	370	M16x2 no.18	M16x2 no.18	340	115	190
707 C3 B	317	285	240	300	340	370	M20x2.5 no.20	M16x2 no.20	340	82	233
709 C3 B	375	340	300	330	370	400	M20x2.5 no.16	M16x2 no.30	350	91	243
710 C3 B	375	340	300	350	400	435	M20x2.5 no.16	M20x2.5 no.16	350	91	243
711 C3 B	425	325	290	410	455	490	M20x2.5 no.24	M20x2.5 no.24	400	110	265
713 C3 B	425	325	290	410	455	490	M20x2.5 no.24	M20x2.5 no.24	420	110	280
715 C3 B	500	460	420	460	510	550	M20x2.5 no.24	M20x2.5 no.24	465	130	315
716 C3 B	500	460	420	460	500	550	M24x3 no.24	M18x1.5 no.36	500	165	308



TRAILED FEED-MIXERS



SELF-PROPELLED FEED-MIXERS



FEED-MIXERS CUTTER DRIVES

With a reliable series of products for feed mixers, Bonfiglioli gives machine builders the best possible choice of wheel drive.

The 300 series is compact and powerful. Its planetary drive train makes it the ideal choice for all heavy duty applications where shock loads and impacts are more the rule than the exception. The product configuration is highly versatile, due with several options for mounting, gear layout, output shaft and motor interface.



300 Series Cutter drives

BENEFITS

- High torque capacity
- High load capacity
- Rugged and compact design

FEATURES

- Hydraulically released parking brake on request
- Foot and flange mounted
- Output shaft: solid with key, splined, splined hollow, hollow with shrink disc
- Flanged axial piston hydraulic motors
- Hydraulic orbit motors
- IEC and Nema motor adapters
- Solid input shaft
- Rotating housing
- Mechanical lifetime seals

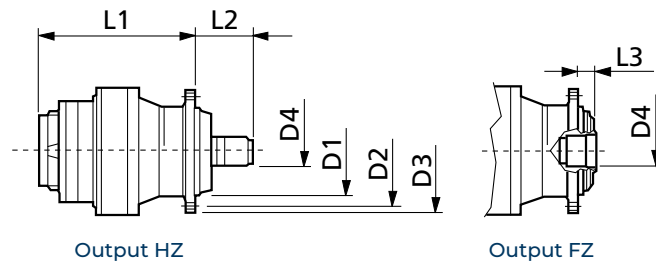


TECHNICAL DATA

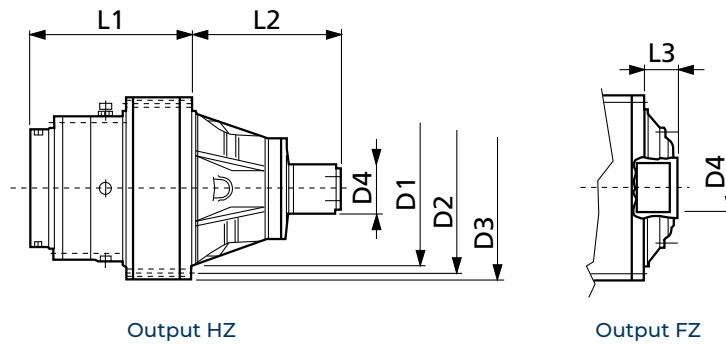
Torque (Nm)	
307 M	15,500
309 M	23,000
310 M	33,500
311 M	49,000
313 M	60,000

TYPE	MAX POWER	MAX INPUT SPEED	RANGE OF RATIOS	DESIGN
	kW	rpm	1:	
307 M	100	2,500	3.4 - 336	A
309 M	130	2,500	3.4 - 336	B
310 M	150	2,000	4 - 350	B
311 M	180	2,000	4 - 291	B
313 M	200	2,000	4 - 304	B

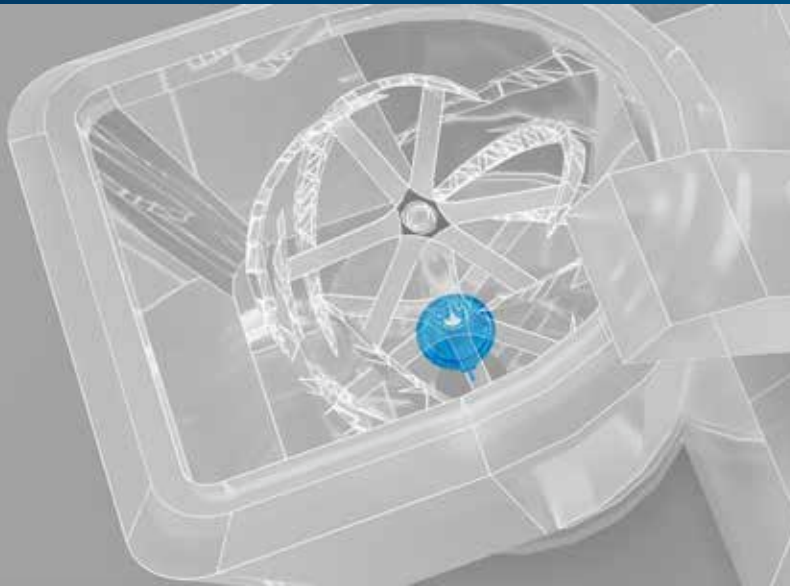
DESIGN A (300 - 307)



DESIGN B (309 - 325)



TYPE	D1	D2	D3	D4	L1 (2 stages)	L2	L3
307 M	230	295	325	80x74 DIN 5482	300	162	36
309 M	278	314	348	80x74 DIN 5482	215	231	82
310 M	340	370	400	100x94 DIN 5482	245	290	95
311 M	358	390	428	100x94 DIN 5482	250	320	88
313 M	385	415	445	120x3 DIN 5480	310	357	81



FEED-MIXERS

The Bonfiglioli auger drives series provides the safest and most effective solution for the vertical and horizontal screw feed mixers.

The flexibility of the design provides users with several options to meet the needs of their applications..

With a reliable optimized design, the Bonfiglioli 700T Series for auger applications meets all feed mixer requirements. The different interfaces make this series very flexible. The two shafts configuration for the in-line and multi-auger models is a fundamental.



700T Series Auger drives

BENEFITS

- Rugged and compact design
- High torque capacity
- High load capacity

FEATURES

- Gear ratios 15.4 ... 18.3
- Input speed 540 rpm
- Rotating housing
- Mechanical lifetime seals



HYDRAULIC
SOLUTIONS

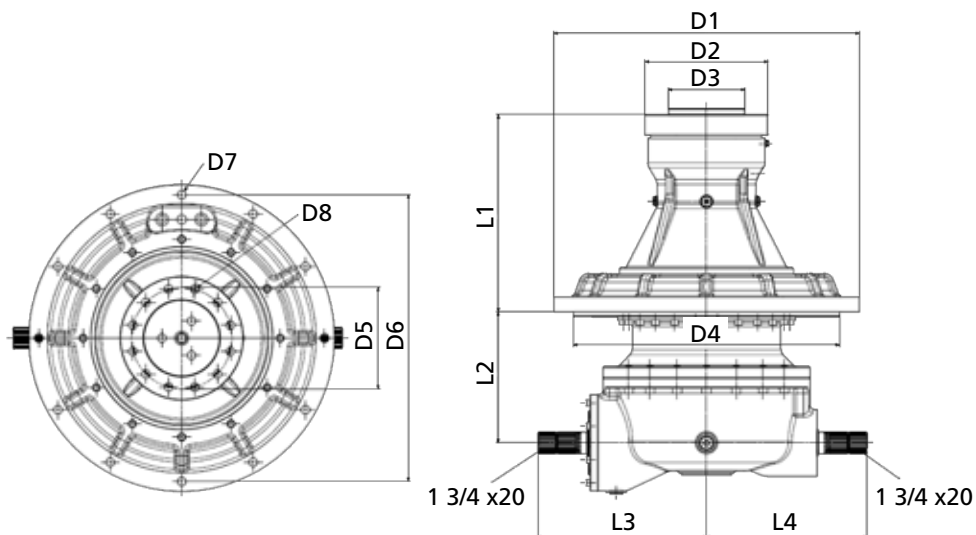


ELECTRIC
SOLUTIONS

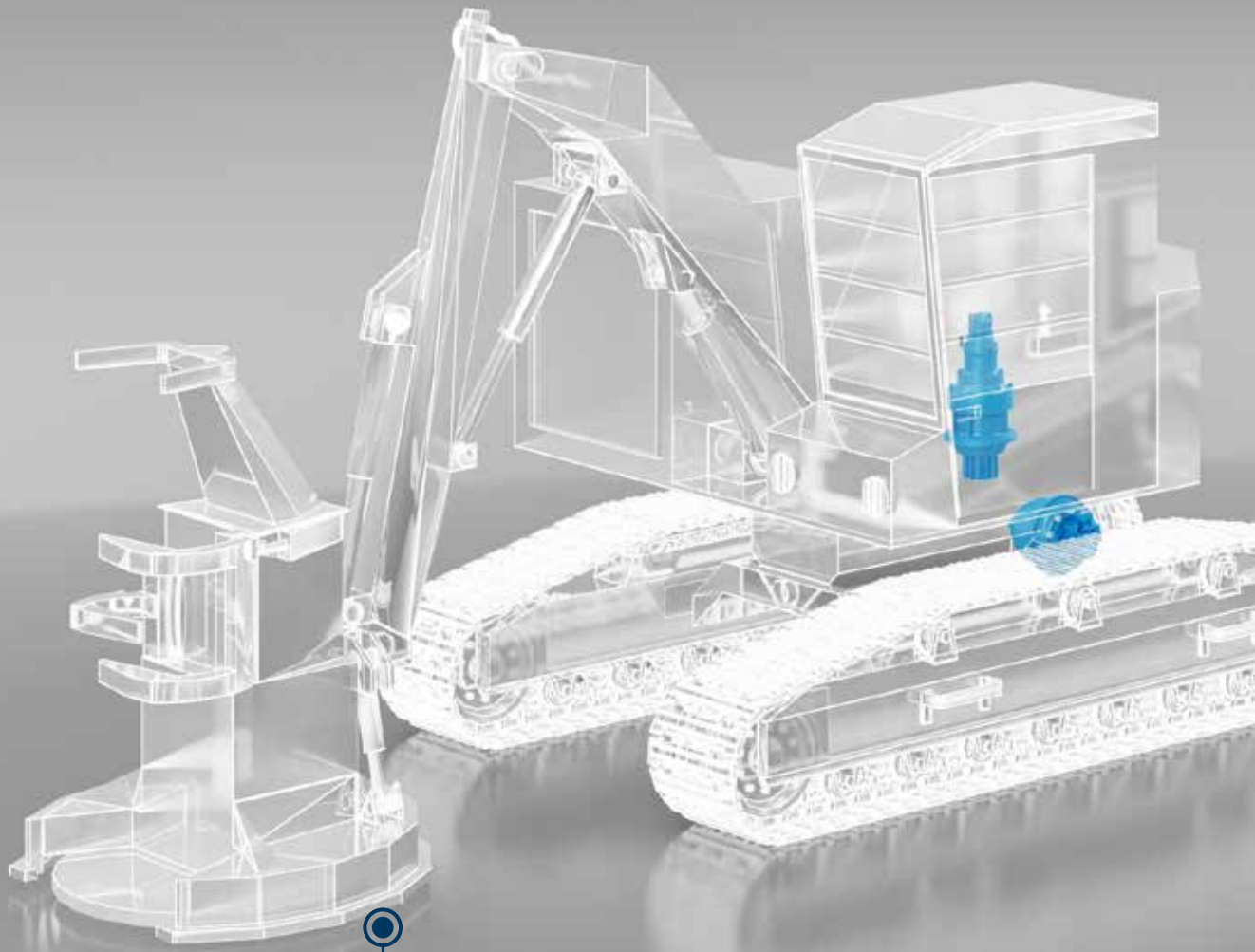
TECHNICAL DATA

Torque (Nm)	
709 T	15,000
711 T	21,000

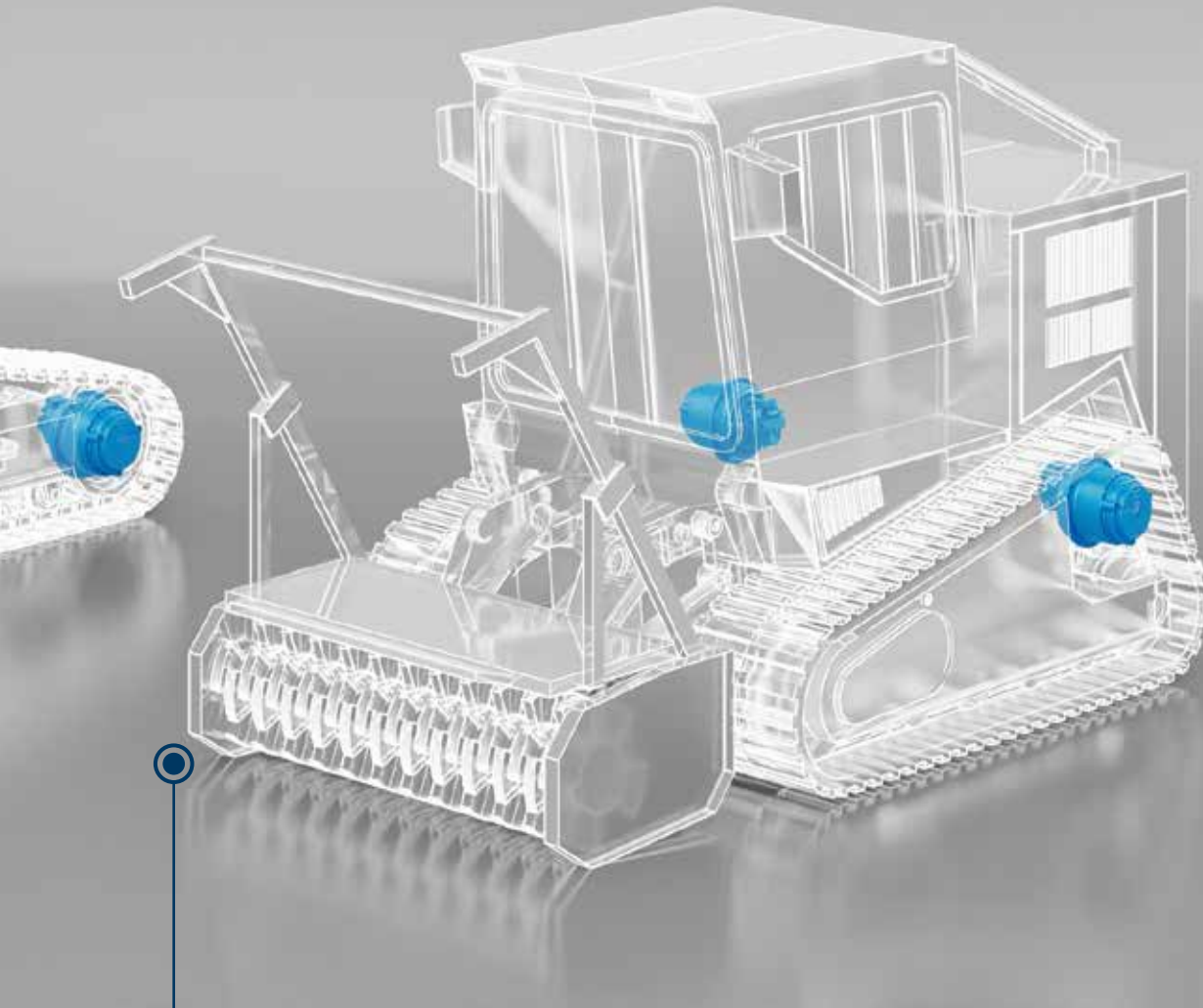
TYPE	NOMINAL OUTPUT TORQUE	MAX. OUTPUT TORQUE	MAX. INPUT SPEED	RANGE OF RATIOS
	Nm	Nm	rpm	1:
709 T	15,000	30,000	540	15.4 - 18.2
711 T	21,000	42,000	540	15.4 - 18.3



TYPE	D1	D2	D3	D4	D5	D6	D7	D8	L1	L2	L3	L4
709 T	620	250	154.8	540	205	580	D18 no.12	M20x1.5 no.12	399	285	342	346
711 T	620	250	154.8	540	205	580	D18 no.12	M20x1.5 no.12	399	305	342	346



1 FELLER BUNCHERS AND LOG LOADERS



2 MULCHER MACHINES



1

FELLER BUNCHERS AND LOG LOADERS

The Bonfiglioli track drive series offers machine builders compact design and reliable solutions. A wide range of sizes is available. Bonfiglioli 700C series units are unsurpassed by any crawler or milling machines. Thanks to compact, rugged design, high torque and load capabilities, and optional mechanical lifetime seals, these solutions are the best possible option for the machine. All units are available with a fail-safe parking brake and most have the option of cartridge type fixed or variable systems.



700C Series Track drives

BENEFITS

- Rotating housing
- Rugged and compact design
- High torque capacity
- High load capacity

FEATURES

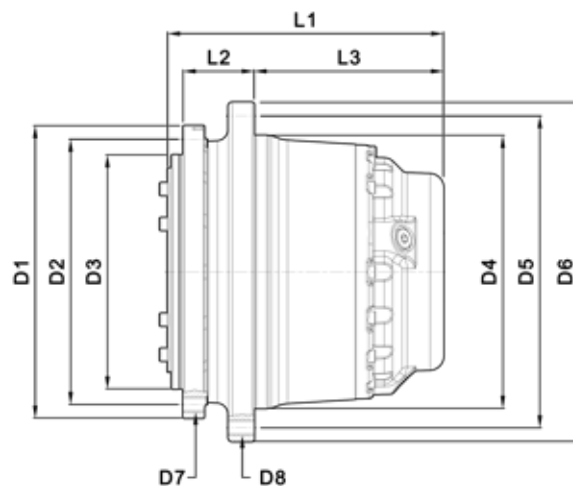
- Up to 4,000 rpm
- Hydraulically released parking brake on request
- Cartridge axial piston hydraulic motors
- Flanged axial piston hydraulic motors
- Hydraulic orbit motors
- Electric version available on request
- Mechanical lifetime seals



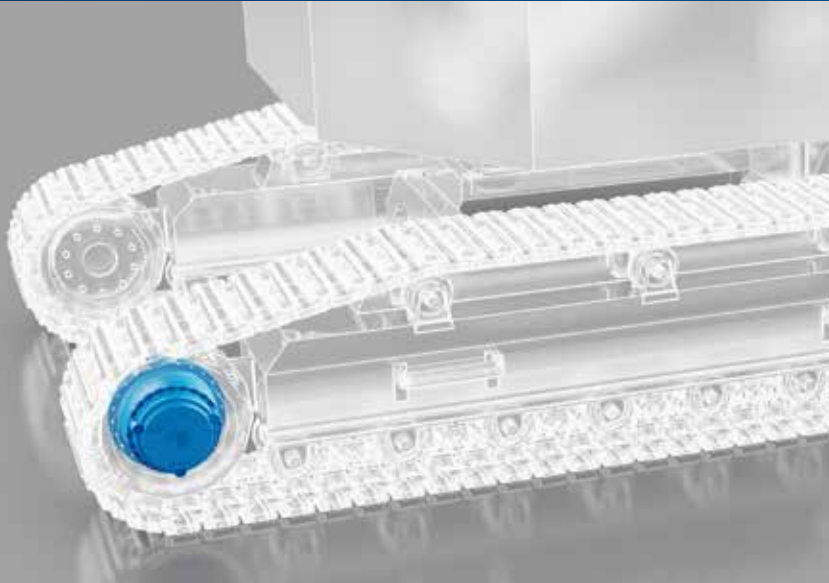
TECHNICAL DATA

Torque (Nm)	
705 C1/2 H	7,000
706 C3 B	15,000
707 C3 B	22,000
709 C3 B	25,000
710 C3 B	35,000
711 C3 B	40,000
713 C3 B	50,000
715 C3 B	80,000
716 C3 B	95,000

TYPE	RANGE OF RATIOS	MAX. INPUT SPEED	HYDRAULIC MOTOR DRIVE	MOTOR DISPLACEMENT	BRAKING TORQUE	MIN. OPENING PRESSURE	WEIGHT	MACHINE WEIGHT
	1:	min ⁻¹		cc/rev	Nm	bar	kg	tons
705 C1 H	5.33	1,000	Orbital motors	160 ÷ 250	250 - 500	10 - 20	80	5
705 C2 H	22 ÷ 53	4,000	Axial piston motor fixed or variable displacement	28 ÷ 60	250 - 500	10 - 20	60	5 ÷ 7
706 C3 B	68 ÷ 173	4,000		28 ÷ 80	250 - 500	10 - 20	95	7 ÷ 13
707 C3 B	55 ÷ 120	4,000		28 ÷ 80	250 - 500	10 - 20	135	13 ÷ 16
709 C3 B	55 ÷ 147	4,000		45 ÷ 160	250 - 600	10 - 20	180	16 ÷ 22
710 C3 B	55 ÷ 166	4,000		60 ÷ 160	250 - 600	10 - 20	200	22 ÷ 28
711 C3 B	71 ÷ 163	4,000		60 ÷ 160	400 - 800	10 - 20	270	28 ÷ 35
713 C3 B	56 ÷ 147	3,500		60 ÷ 160	400 - 800	10 - 20	310	35 ÷ 45
715 C3 B	62 ÷ 156	3,500		60 ÷ 160	600 - 1,000	10 - 20	350	28 ÷ 35
716 C3 B	83 ÷ 174	3,500		60 ÷ 160	800 - 1,200	10 - 20	400	35 ÷ 40



TYPE	D1	D2	D3	D4	D5	D6	D7	D8	L1	L2	L3
705 C1 H	325	290	250	200	240	280	M16x2 no.10	M20x2.5 no.8	295	72	96
705 C2 H	270	230	190	220	260	300	M16x2 no.12	M16x2 no.16	250	72	158
706 C3 B	330	300	270	280	330	370	M16x2 no.18	M16x2 no.18	340	115	190
707 C3 B	317	285	240	300	340	370	M20x2.5 no.20	M16x2 no.20	340	82	233
709 C3 B	375	340	300	330	370	400	M20x2.5 no.16	M16x2 no.30	350	91	243
710 C3 B	375	340	300	350	400	435	M20x2.5 no.16	M20x2.5 no.16	350	91	243
711 C3 B	425	325	290	410	455	490	M20x2.5 no.24	M20x2.5 no.24	400	110	265
713 C3 B	425	325	290	410	455	490	M20x2.5 no.24	M20x2.5 no.24	420	110	280
715 C3 B	500	460	420	460	510	550	M20x2.5 no.24	M20x2.5 no.24	465	130	315
716 C3 B	500	460	420	460	500	550	M24x3 no.24	M18x1.5 no.36	500	165	308



1

FELLER BUNCHERS AND LOG LOADERS

The F Series is perfectly suited to any crawler or milling machine. Thanks to compact, rugged design, high torque and load capabilities, these solutions are the best possible option. All units available with a fail-safe parking brake and for most cartridge type fixed or variable systems. Different disengagement systems are available on demand for all the sizes.



F Series Track drives

BENEFITS

- Rotating housing
- Rugged and compact design
- High torque capacity
- High load capacity
- High performance

FEATURES

Gear ratios

- 14 ... 824

Standard features

- Compact structure
- 3-7 Planetary wheels per stage
- Notchless ground tooth root
- Integrated disc-brake
- Mechanical lifetime seals

Special executions on request

- Mechanical disconnect device
- Low and high temperature version

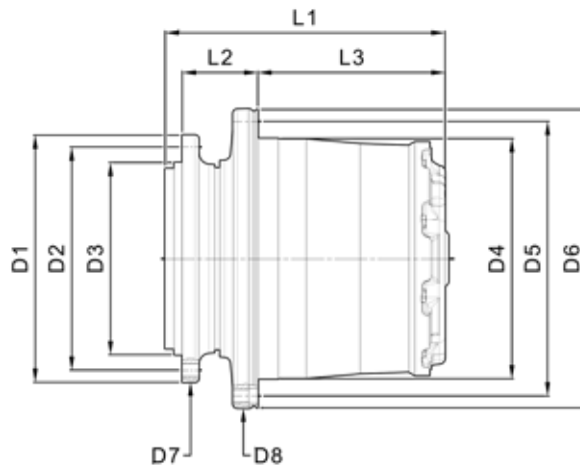


TECHNICAL DATA

Torque (Nm)	
F13A	13,000
FD20	20,000
F30	30,000
F40	40,000
F40A	40,000
F55	55,000
F55A	55,000
F55B	55,000
F80	80,000
F100	100,000
F130	130,000
F180	180,000

Stated torques are peak values for short duration.

TYPE	RANGE OF RATIOS ²	CAPACITY OF BEARING		WEIGHT ⁴	MULTI-DISK BRAKE		HYDRAULIC MOTOR	
		C-dynamic	Co-static		Locking torque	Release pressure min.	Plug-in fixed	Plug-in variable
	i	kN	kN	kg	Nm	bar	ccm	ccm
F13A	41 ⁽¹⁾ ÷ 229	132	255	50	200	17	28-30-32	28-45
FD20	81 ÷ 228	194/194	325/315	72	300	16	28-30-32	28-45
F30	19 ⁽¹⁾ ÷ 305	132/194	255/325	94	300 (255; 400) ³	16 (16; 22) ³	28-30-32-40-45-56-60-63	28-45-55-60
F40	19 ⁽¹⁾ ÷ 181	224	405	115	420	18	40-45-56-60-63	55-60
F40A		224	405	123	420	18	80-90	80
F55	16 ⁽¹⁾ ÷ 185	224	405	165	420 (390; 500) ³	15 (15; 21) ³	80-90	80
F55A		224	405	177	420 (390; 500) ³	15 (15; 21) ³	40-45-56-60-63	55-60
F55B		224	405	181	420 (390; 500) ³	15 (15; 21) ³	-	107-110
F80	19 ⁽¹⁾ ÷ 206	300	570	230	600 (375; 550; 1,000) ³	18 (18; 19; 28) ³	80-90-107-110-125-160-180	80-107-110-160
F100	21 ⁽¹⁾ ÷ 226	498	1,010	330	600 (900) ³	15 (13) ³	107-125-160-180	107-110-160
F130	14 ⁽¹⁾ ÷ 206	523	980	452	750	19	107-125-160-180	107-160
F180	206 ÷ 824 ⁽⁵⁾	787	1,650	636	1,375 (800) ³	35 (35) ³	160-180	160



TYPE	D1	D2	D3	D4	D5	D6	D7	D8	L1	L2	L3
F13A	256	230	190	220	260	290	M16x2 no.12	M16x2 no.8	255	72	153
FD20	304	275	240	270	305	335	M16x2 no.18	M16x2 no.18	300	75	184
F30	304	275	240	270	305	335	M16x2 no.18	M16x2 no.18	323	75	223
F40	320	285	240	295	335	370	M20x1.5 no.20	M20x1.5 no.20	338	91	231
F40A	345	310	270	295	335	370	M20x1.5 no.16	M20x1.5 no.20	357	91	231
F55	360	325	280	350	400	435	M20x1.5 no.24	M20x1.5 no.20	413	110	278
F55A	320	285	240	350	40	435	M20x1.5 no.20	M20x1.5 no.20	399	91	278
F55B	370	335	290	350	400	435	M20x1.5 no.20	M20x1.5 no.20	425	110	278
F80	410	370	330	400	450	490	M24x2 no.20	M24x2 no.20	415	90	290
F100	500	460	390	408	460	500	M24x2 no.30	M24x2 no.24	463	165	261
F130	550	500	390	450	500	550	M24x2 no.32	M24x2 no.32	532	190	295
F180	560	510	450	535	600	650	M24x2 no.30	M27x2 no.30	534.5	168	337

1) 2-stage on demand
2) Other ratios on request

3) Optional brake torques
4) Without hydraulic motor

5) In combination with input bevel drive





700T Series Sleew drives

BENEFITS

- Flange mounted
- Rugged design
- High torque capacity

FEATURES

- Output shaft: splined or with pinion
- Output shafts supported by heavy-duty capacity bearings

Brake options

- Hydraulically released parking brake on request
- DC and AC type

Applicable motors

- Piston hydraulic motors
- Hydraulic orbit motors
- Electric motors IEC

Motor options

- Pressure relief valve
- Overcenter valve

1

FELLER BUNCHERS AND LOG LOADERS

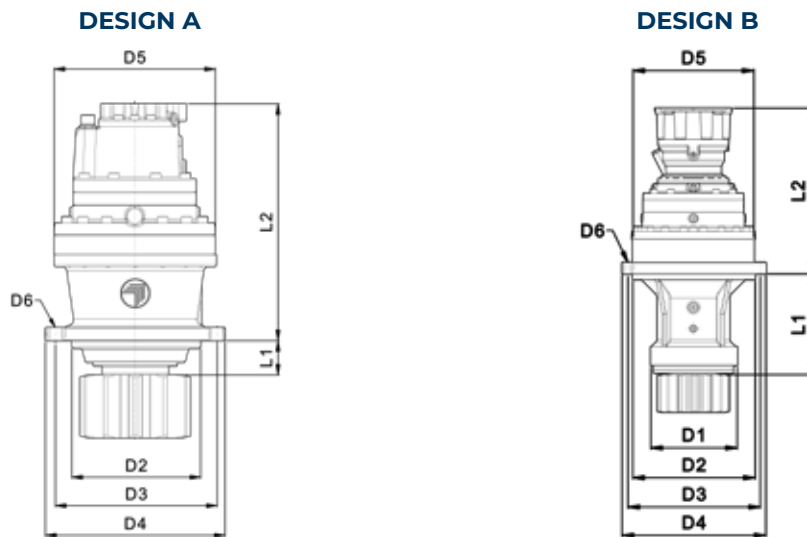
Bonfiglioli sleew drives for forestry machines are the most efficient solutions available on the market today. Highly valued by major manufacturers, the product range benefits from years of field testing. The Bonfiglioli 700T series provides the safest, most effective solution for cranes, excavators and forestry machines. Highly appreciated by all major manufacturers, the 700T Series has long been established in the crane, excavator and special equipment industries.



TECHNICAL DATA

Model	Torque (Nm)
705 T2	5,000
706 T2	7,500
707 T2	9,000
709 T2	12,000
710 T2	18,000
711 T2	20,000
712 T2	30,000
713 T3	40,000

TYPE	RANGE OF RATIOS	MAX. INPUT SPEED	HYDRAULIC MOTOR DRIVE	MOTOR DISPLACEMENT	BRAKING TORQUE	MIN. OPENING PRESSURE	WEIGHT	DESIGN	MACHINE WEIGHT
	1:	min ⁻¹		cc/rev	Nm	bar	kg		tons
705 T2 F	12 ÷ 44	3,500	Axial piston motor fixed or variable displacement	28 - 80	50 - 400	10 - 30	55	A	Up to 10
705 T2 L	12 ÷ 44	3,500		28 - 80	50 - 400	10 - 30	80	B	Up to 10
706 T2 N	15 ÷ 46	3,500		28 - 80	400 - 1,000	20 - 30	95	B	14-16
707 T2 N	17 ÷ 47	3,500		28 - 80	400 - 1,000	20 - 30	140	B	16-18
709 T2 N	17 ÷ 47	3,500		45 - 110	400 - 1,000	20 - 30	165	B	18-22
710 T2 N	19 ÷ 38	3,500		45 - 110	400 - 1,000	20 - 30	250	B	22-28
711 T2 C	14 ÷ 39	3,500		60 - 160	400 - 1,000	20 - 30	300	B	28-35
711 T2 F	14 ÷ 39	3,500		60 - 160	400 - 1,000	20 - 30	160	A	28-35
712 T3 F	80 ÷ 200	3,500		60 - 200	400 - 1,000	20 - 30	450	A	35-40
712 T3 N	80 ÷ 200	3,500		60 - 200	400 - 1,000	20 - 30	450	B	35-40
713 T3 N	50 ÷ 300	3,500		60 - 200	400 - 1,000	20 - 30	500	B	Over 40

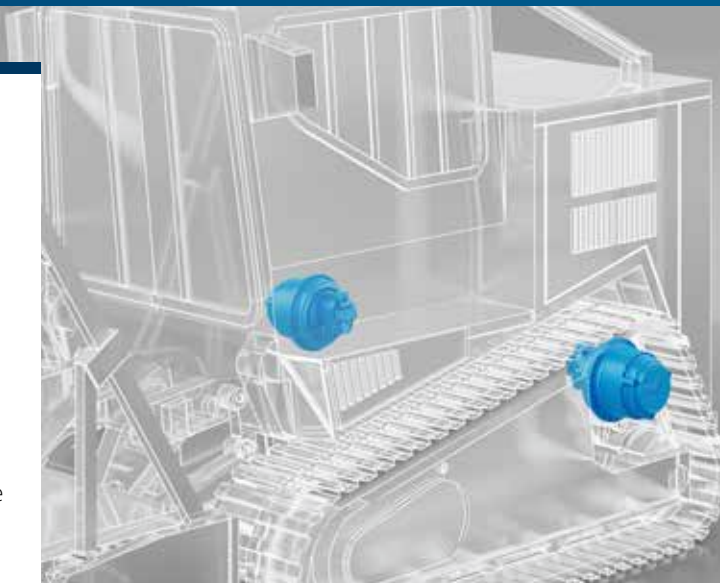


TYPE	D1	D2	D3	D4	D5	D6	L1	L2	M	Z
705 T2 F	-	175	245	272	245	18	41	440	Pinion module / number of teeth UPON REQUEST	
705 T2 L	180	195	245	290	245	13	171	470		
706 T2 N	200	250	325	360	292	17	225	560		
707 T2 N	230	280	314	348	345	17	295	670		
709 T2 N	250	280	380	420	345	17	295	720		
710 T2 N	300	425	460	500	400	22	360	730		
711 T2 C	300	425	460	500	428	22	345	735		
711 T2 F	500	320	500	560	425	22	70	750		
712 T3 F	-	410	450	490	420	ø21 no.24	120	900		
712 T3 N	400	425	470	510	420	ø20 no.30	350	900		
713 T3 N	340	400	510	560	445	22	420	1,030		

2

MULCHER MACHINE

The Bonfiglioli track drive series offers mulcher machine builders a compact design and reliable solutions. A wide range of sizes is available. Bonfiglioli 700C series units are unsurpassed by any crawler or milling machines. Thanks to compact, rugged design, high torque and load capabilities, and optional mechanical lifetime seals, these solutions are the best possible option for the machine. All units are available with a fail-safe parking brake and most have the option of cartridge type fixed or variable systems.



700C Series

Track drives

BENEFITS

- Rotating housing
- Rugged and compact design
- High torque capacity
- High load capacity

FEATURES

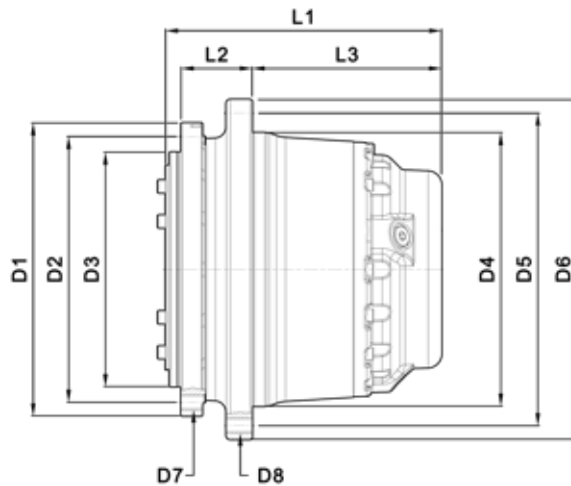
- Up to 4.000 rpm
- Hydraulically released parking brake on request
- Cartridge axial piston hydraulic motors
- Flanged axial piston hydraulic motors
- Hydraulic orbital motors
- Electric version available on request
- Mechanical lifetime seals



TECHNICAL DATA

Torque (Nm)	
705 C1/2 H	7,000
706 C3 B	15,000
707 C3 B	22,000
709 C3 B	25,000

TYPE	RANGE OF RATIOS	MAX. INPUT SPEED	HYDRAULIC MOTOR DRIVE	MOTOR DISPLACEMENT	BRAKING TORQUE	MIN. OPENING PRESSURE	WEIGHT	MACHINE WEIGHT
	1:	min ⁻¹		cc/rev	Nm	bar	kg	tons
705 C1 H	5.33	1,000	Orbital motors	160 ÷ 250	250 - 500	10 - 20	80	5
705 C2 H	22 ÷ 53	4,000	Axial piston motor fixed or variable displacement	28 ÷ 60	250 - 500	10 - 20	60	5 ÷ 7
706 C3 B	68 ÷ 173	4,000		28 ÷ 80	250 - 500	10 - 20	95	7 ÷ 13
707 C3 B	55 ÷ 120	4,000		28 ÷ 80	250 - 500	10 - 20	135	13 ÷ 16
709 C3 B	55 ÷ 147	4,000		45 ÷ 160	250 - 600	10 - 20	180	16 ÷ 22

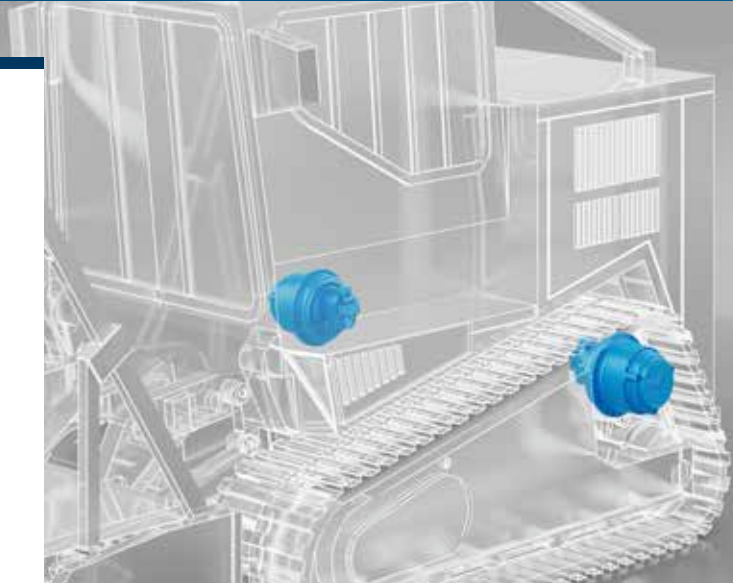


TYPE	D1	D2	D3	D4	D5	D6	D7	D8	L1	L2	L3
705 C1 H	325	290	250	200	240	280	M16x2 no.10	M20x2.5 no.8	295	72	96
705 C2 H	270	230	190	220	260	300	M16x2 no.12	M16x2 no.16	250	72	158
706 C3 B	330	300	270	280	330	370	M16x2 no.18	M16x2 no.18	340	115	190
707 C3 B	317	285	240	300	340	370	M20x2.5 no.20	M16x2 no.20	340	82	233
709 C3 B	375	340	300	330	370	400	M20x2.5 no.16	M16x2 no.30	350	91	243

2

MULCHER MACHINE

The Bonfiglioli track drive series offers mulcher machine builders compact design and reliable solutions. The 700CT Series offers you the complete drive solution of an hydraulic moto-reducer completely designed by Bonfiglioli. High performance and efficiency in an unique solution are the big plus of this choice. Configurations with 2-speed or variable speed are available.



700CT Series

Track drives

BENEFITS

- Compact, lightweight design
- 2 speed and variable speed configurations available
- Motor-gearbox integrated solution

FEATURES

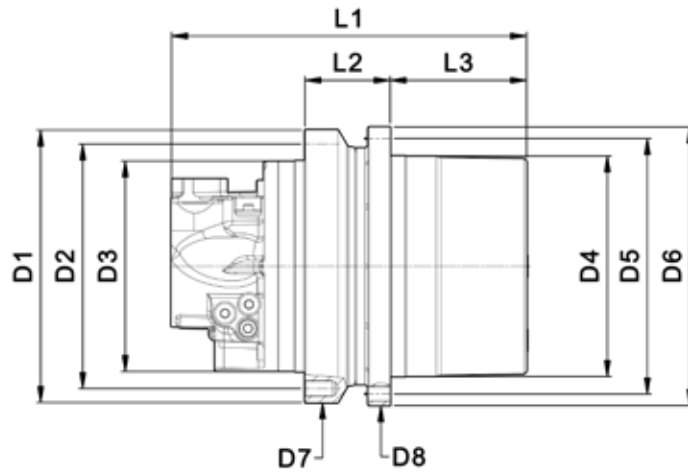
- Integrated motor-gearbox powered by hydraulic motor developed with Danfoss
- Rotating housing
- Pressure relief valve (shockless type) on request
- Anti-cavitation valve on request
- Multiple ratios
- Integrated disc-brake



TECHNICAL DATA

Torque (Nm)	
704 CT	5,000
705 CT	9,000
705 XT	12,000
706 CT	16,000

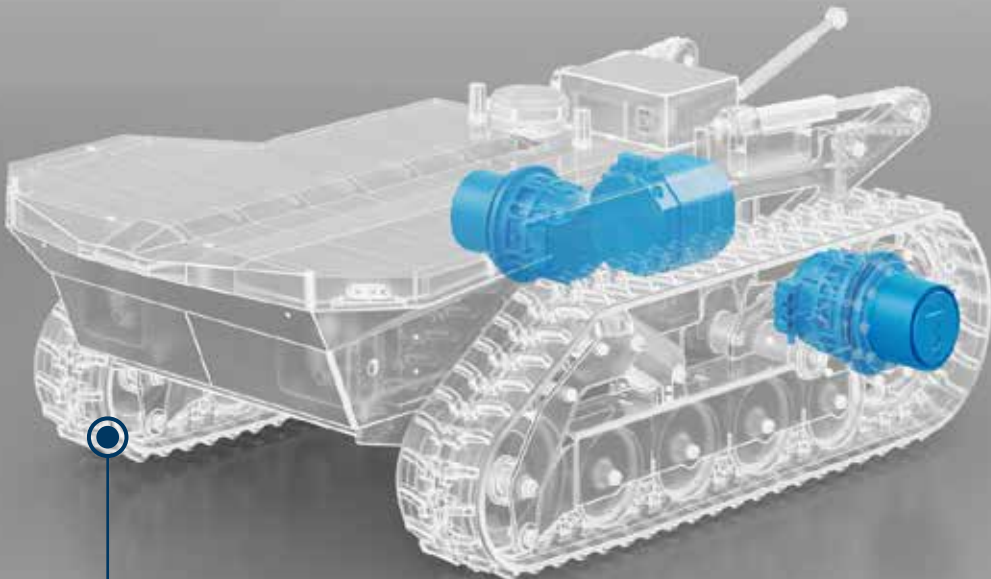
TYPE	TORQUE	MAX INPUT SPEED	RANGE OF RATIOS	MOTOR DISPLACEMENT	BRAKING TORQUE	MIN. OPENING PRESSURE	WEIGHT
	Nm	rpm	1:	cc/rev	Nm	bar	kg
704CT	5,000	4,000	16-21	45	310	18	60
705CT	9,000	4,000	18-53	45	310	18	65
705XT	12,000	4,000	22	68	475	18	120
706CT	16,000	4,000	26	68	475	18	125



TYPE	D1	D2	D3	D4	D5	D6	D7	D8	L1	L2	L3
704CT	272	244	210	220	255	278	M16X2 n12	M16X2 n12	355	85	136
705CT	272	244	210	220	255	278	M16X2 n12	M16X2 n12	355	85	136
705XT	335	300	270	250	285	320	M16X2 n12	M16X2 n12	433	112	164
706CT	330	300	270	280	320	345	M16X2 n18	M16X2 n18	450	95	191



WHEELED AGRIROBOT



UGV VEHICLE

SOLUTIONS FOR Agriculture & Forestry



600WE Series Wheel Drives



MP + BMD MOTOR Series Steering Drives

BENEFITS

- Compact dimensions
- Low noise
- High efficiency
- Maintenance free motors

- Compact
- High performance
- High torque in a limited space
- Reduced TCO
- Easy maintenance
- Low noise
- No polluting emissions

FEATURES

- Multistage planetary drive
- Optimized gear design for maximum efficiency and minimum noise
- Integrated, low voltage, 3 phase PM or induction motor
- Integrated, high accuracy, temperature sensor
- High resolution, hall effect speed sensor
- Motor protection rating degree up to IP67

- Permanent magnet motors
- Suitable for 48-400 Vdc batteries
- Air cooled
- Aluminum housing
- Protection rating >IP65
- Precision steering thanks to low backlash

TECHNICAL DATA

	Torque (Nm)
600 WL	500
600 WE	900
601 RE	3,000
602 RE	3,500
602 WE	4,500
604 WE	7,000
605 WE	10,000

	Torque (Nm)	Torque (Nm)	
BMD 65	0,85	BMD 118	5,6
BMD 65	1,7	BMD 118	10,2
BMD 65	2,2	BMD 118	14
BMD 82	3,2	BMD 145	16,8
BMD 82	4,4	BMD 145	22
BMD 102	4,0	BMD 170	34
BMD 102	7,2	BMD 170	45
BMD 102	9,6		



WHEELED & TRACKED AGRIROBOTS

With a series of reliable products for wheeled AGV Robot, Bonfiglioli offers machines builders a range of excellent drive systems.

Bonfiglioli portfolio guarantees performances including high torque in a compact space with limited axial dimensions. The electric drives includes a maintenance-free compact electric motor, which offers comparable dimensions to the hydraulic one.



700CE Series
Track Drives



BPM MOTOR Series
Pump Drives

BENEFITS

- Compact
- High performance
- High torque in a limited space
- Reduced TCO
- Easy maintenance
- Low noise
- No polluting emissions

- Compact
- High performance
- High torque in a limited space
- Reduced TCO
- Easy maintenance
- Low noise
- No polluting emissions

FEATURES

- Reduced axial length thanks to PM e-motor
- Fully integrated design
- Integrated electromagnetic parking brake
- Integrated speed and temperature sensors
- High protection rating

- Permanent magnet motors
- Suitable for 48-400 Vdc batteries
- Air cooled
- Aluminum housing
- Protection rating >IP65
- SAE flanges available

TECHNICAL DATA

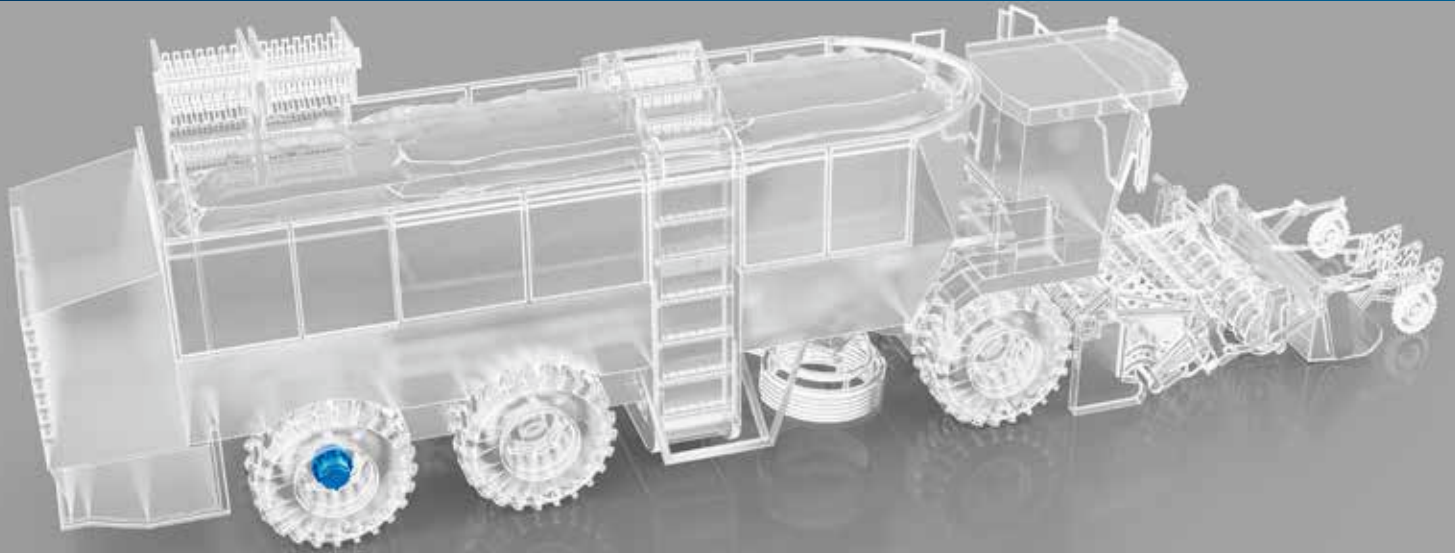
	Torque (Nm)
700 CE	1,200
700-2 CE	1,900
701 CE	2,500
702 CE	3,500
704 CE	5,000
705 CE	9,000

	Rated power (kW)
BPM 200-L1	5
BPM 200-L2	7,5
BPM 200-L3	10
BPM 200-L4	15

Extra features

-
- **INTEGRATED DYNAMIC AND PARKING BRAKES**
 - **CENTRAL TIRE INFLATION SYSTEM**





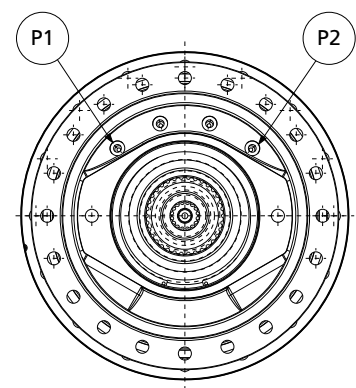
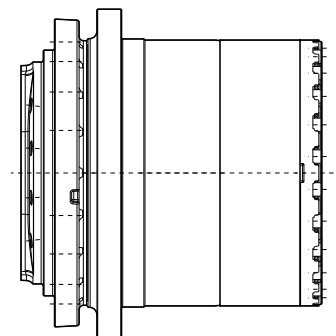
Integrated dynamic and Parking brakes for 600 Series Wheel Drives

BENEFITS

- Compact and modular design
- Compliant with international regulations for service, emergency and parking braking

FEATURES

- Improved modularity of service brake actuation
- Integrated oil immersed brake disc package
- Dedicated piston return system for optimized thermal performance
- Heavy duty discs to maximize thermal capacity for best energy dissipation, even under extreme conditions

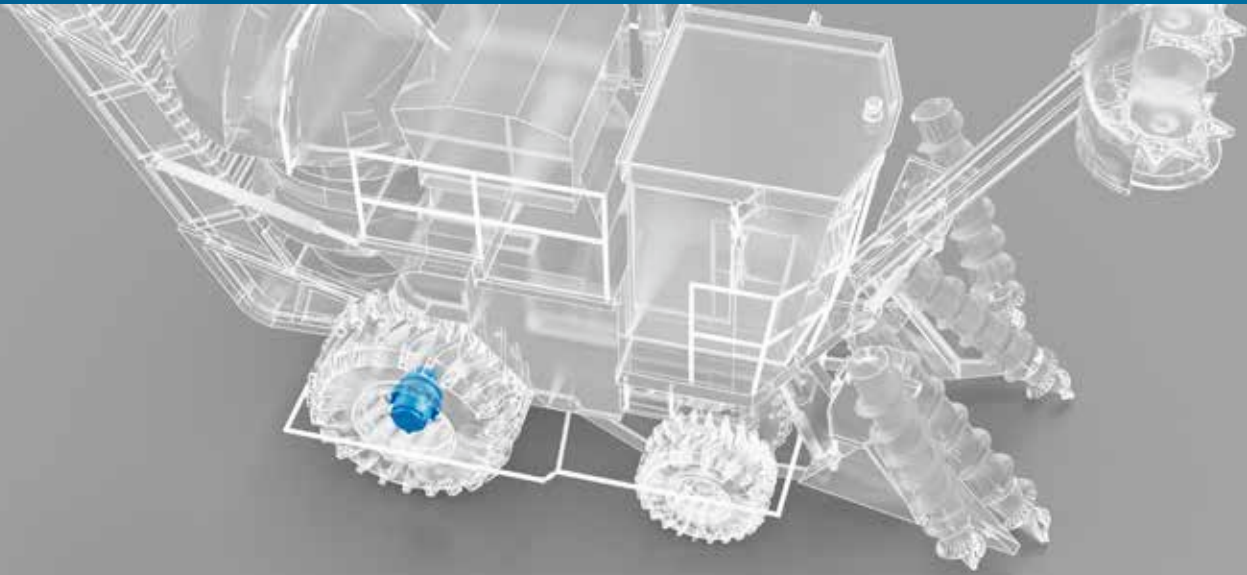


P1: static brake port

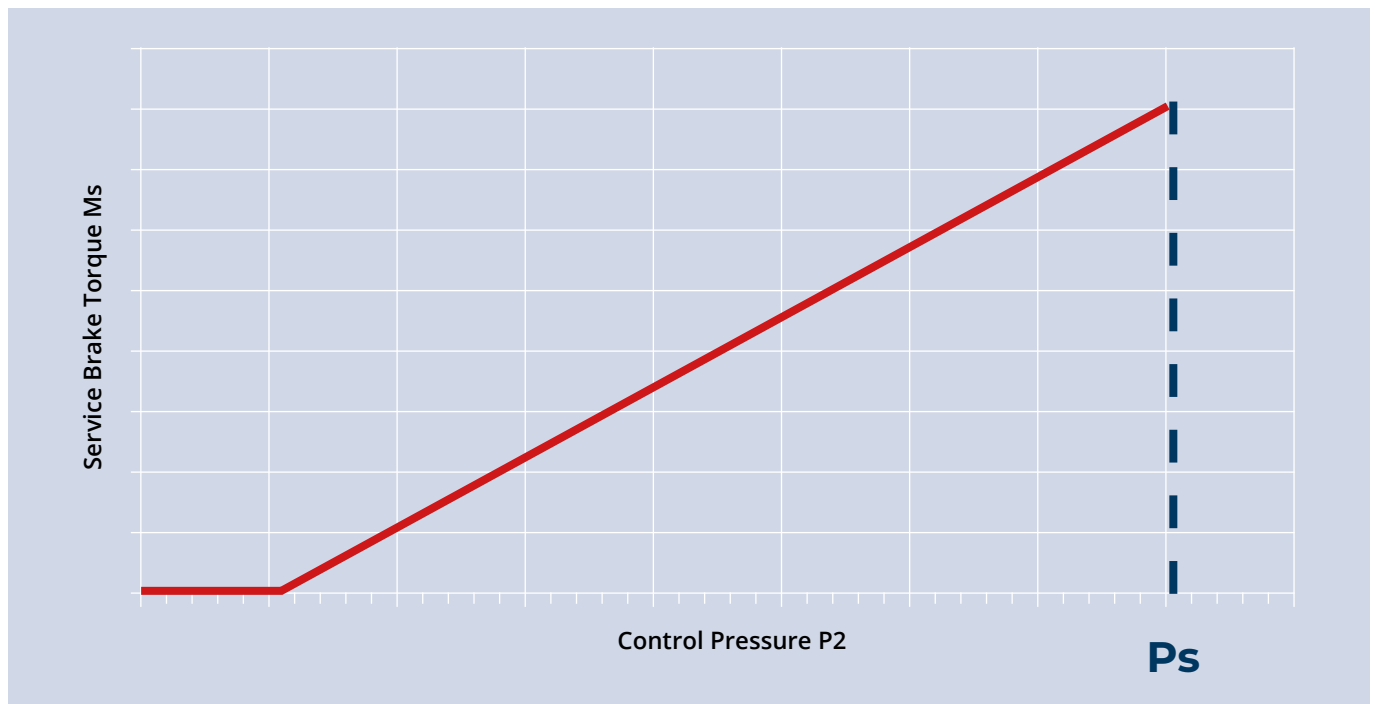
P2: service brake port

ACTION	P1 PORT	P2 PORT
Parking brake engaged	Not pressurized	Not pressurized
Travel	Pressurized	Not pressurized
Service braking	Pressurized	Pressurized (to modulate the braking torque)

INTEGRATED DYNAMIC AND PARKING BRAKES



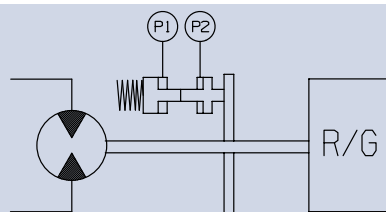
SERVICE BRAKE PERFORMANCE



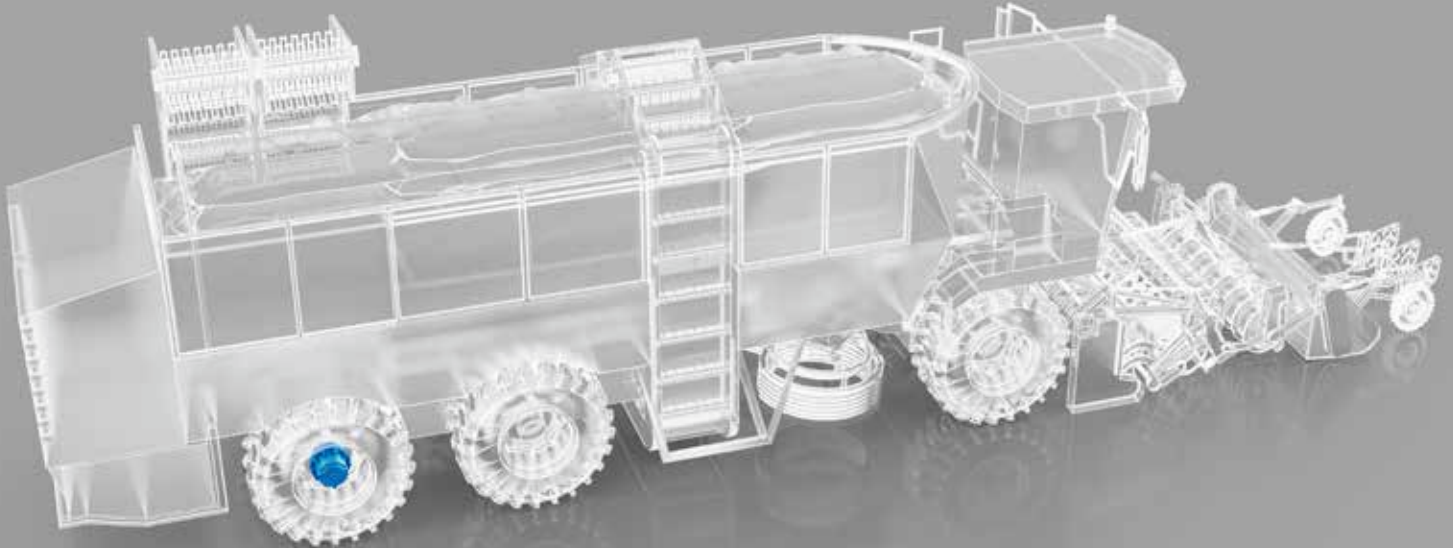
GEARBOX MODEL	SERVICE BRAKE		PARKING BRAKE
	MAX TORQUE (MS)	MAX OPERATING PRESSURE (PS)	MAX TORQUE (MP)
	Nm	bar	Nm
606 W	400	70	450
607 W	400	70	450
609 W	600	100	900
610 X	800	150	1.100

The above data are for reference only. To be verified based on actual machine data.

Hydraulic Diagram



P1: static brake port
P2: service brake port



609W2 wheel drive with integrated CTIS

Tire pressure control while driving

BENEFITS

Improved Mobility

- Increases traction when driving off road, in sand, mud, etc.
- Allows higher vehicle speeds and fuel saving during on-road transfer

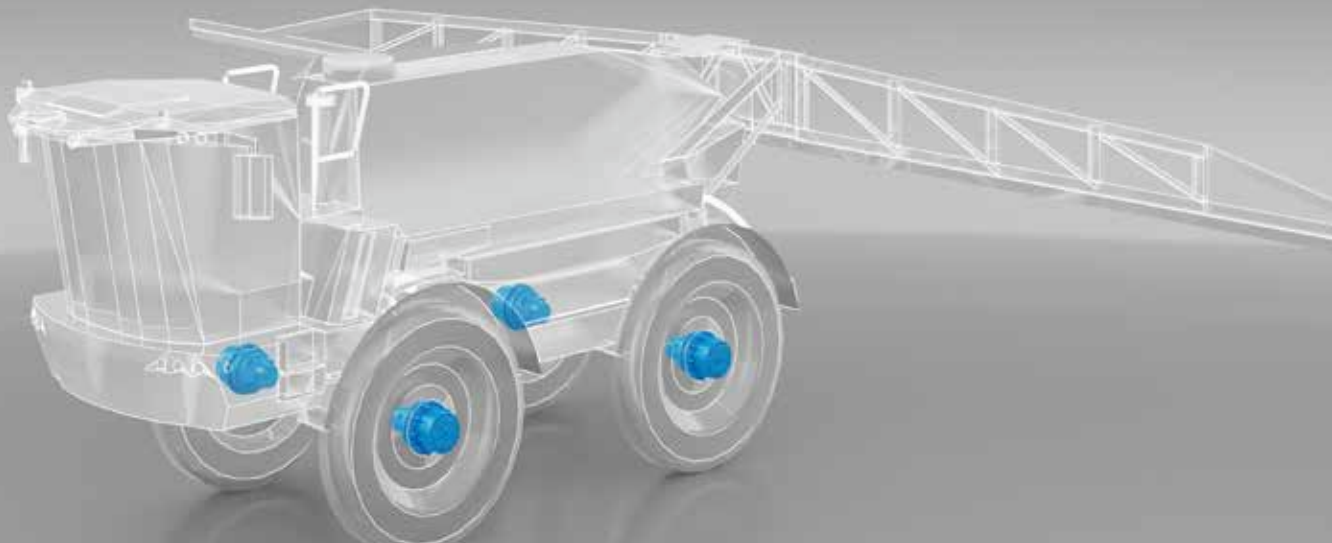
Reliable Performance

- Eliminates tire leak down: seals and control hoses are isolated from tires and not pressurized during normal operation or when parked.
- The system covers the complete machine lifetime without maintenance
- Allows continuous vehicle operation with less Tire wear

FEATURES

- Operator panel in the cabin
- Pre-selected menus depending on load and terrain types
- Automatic over-speed protection inflates tires to a pressure related to vehicle speed
- Tire maintenance feature checks and maintains pressure at selectable time intervals
- Multi-channel pressure control available by axle groups.
- Integrated diagnostics alerts driver of potential tire problems and system status

CENTRAL TIRE INFLATION SYSTEM



AIR PRESSURE CONTROL

CTIS stands for **Central Tire Inflation System**. It is a system which allows the wheel vehicles Tire pressure control while driving.

This means **the operator can modify the air pressure without leaving the cabin**, adjusting it according to the soil conditions and operation needs.

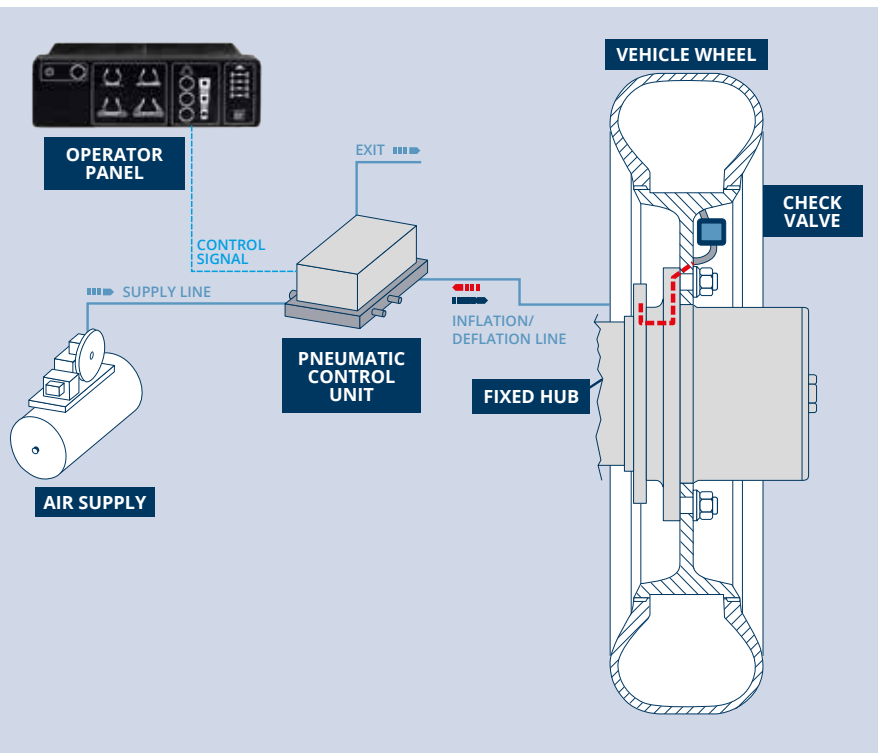


CONTROL SYSTEM

Bonfiglioli CTIS-ready wheel drive consists in a new gearbox design that includes a special air passage system inside. It has been designed for machines already equipped with the Tire inflation control system.

This maintains the same overall dimensions, to integrate and protect the component with only the two threaded connections for the air hoses.

These advantages are achieved with **basically no outline dimension change compared to a standard wheel drive**, thanks to the compact internal design.



Our worldwide presence

Thanks to an international network of closely interconnected commercial and production sites, we can guarantee the same high standards of Bonfiglioli quality anywhere at any given time. We know that our direct presence in local markets is the key to long-lasting success, so our family includes 17 production sites, 23 commercial sites and more than 550 distributors around the world.

Our organization is always close by, offering complete and efficient solutions and supporting our customers with dedicated services, co-engineering and after-sales assistance.

17  PRODUCTION SITES

23  COMMERCIAL SITES

80  COUNTRIES

550  DISTRIBUTORS

~5,000  PEOPLE



Bonfiglioli global locations

AUSTRALIA

Bonfiglioli Transmission (Aust.) Pty Ltd
Plumpton NSW



BRAZIL

Bonfiglioli Redutores do Brasil Ltda
São Bernardo do Campo - São Paulo



CHINA

Bonfiglioli Drives (Shanghai) Co. Ltd.
Shanghai



Selcom Electronics (Shanghai) Co., Ltd

Shanghai



Shanghai



FRANCE

Bonfiglioli Transmission S.A.S.

Marly la Ville



GERMANY

Bonfiglioli Deutschland GmbH

Neuss



Bonfiglioli Deutschland GmbH

Krefeld



O&K Antriebstechnik GmbH

Hattingen



INDIA

Bonfiglioli Transmission Ltd.

Mobility & Wind Industries

Thirumudivakkam

Kancheepuram - Tamil Nadu



Industry & Automation Solutions

Mannur Village, Sriperumbudur Taluk

Kancheepuram - Tamil Nadu



Industry & Automation Solutions

Pune - Maharashtra



ITALY

Bonfiglioli Riduttori S.p.A.

Industry & Automation Solutions

Calderara di Reno (BO)



Industry & Automation Solutions

Carpiano



Mobility & Wind Industries

Forlì



Industry & Automation Solutions

Rovereto



Selcom Group S.p.A.

Castel Maggiore (BO)



Castel Maggiore (BO)



Cadriano (BO)



NEW ZEALAND

Bonfiglioli Transmission (Aust.) Pty Ltd

Auckland - Ellerslie



SINGAPORE

Bonfiglioli South East Asia Pte Ltd

Singapore



SLOVAKIA

Bonfiglioli Slovakia s.r.o.

Považská Bystrica



SOUTH AFRICA

Bonfiglioli South Africa Pty Ltd.

Johannesburg



SPAIN

Tecnotrans Bonfiglioli S.A

Castellbisbal - Barcelona



TURKEY

Bonfiglioli Türkiye Jsc

Çiğli - Izmir



UNITED KINGDOM

Bonfiglioli UK Ltd.

Warrington - Cheshire

Tel. +44 1925 852667



USA

Bonfiglioli USA Inc.

Hebron - Kentucky



VIETNAM

Bonfiglioli Vietnam Co. Ltd.

Ben Cat city, Binh Duong province





We have a relentless commitment to excellence, innovation & sustainability. Our team creates, distributes and services world-class power transmission & drive solutions to keep the world in motion.

HEADQUARTERS

Bonfiglioli S.p.A.

Via Cav. Clementino Bonfiglioli, 1
40012 Calderara di Reno - Bologna (Italy)
Tel. +39 051 6473111

