



SOLUTIONS FOR

# E-mobility

PRODUCT RANGE





*We engineer dreams*



# Contents

---

<b>E-MOBILITY .....</b>	<b>5</b>
<b>MILESTONES .....</b>	<b>6</b>
<b>WAREHOUSE &amp; MATERIAL HANDLING .....</b>	<b>8</b>
Forklifts.....	10
Warehouse trucks .....	11
Automated guided vehicles .....	12
Access platforms.....	13
<b>OFF HIGHWAY.....</b>	<b>14</b>
Mini excavators .....	16
Excavators .....	17
Mini track loaders .....	18
Compact track loaders .....	19
Pavers .....	20
Crushers & Screeners .....	22
Transit mixer trucks .....	23
Sprayers .....	24
Wheeled & Tracked agrirobots .....	26
<b>OUR PROJECTION INTO THE FUTURE .....</b>	<b>28</b>
<b>OUR CONSTANT AMBITION .....</b>	<b>29</b>
<b>OUR GLOBAL PRESENCE.....</b>	<b>30</b>

# Engineering Solutions



[WWW.BONFIGLIOLI.COM](http://WWW.BONFIGLIOLI.COM)



# E-mobility

## ELECTRIC POWERTRAIN AND DRIVE SOLUTIONS

A major force for over 40 years, Bonfiglioli conceives, designs and produces custom powertrains and drives for a wide range of electric applications. Whenever a custom solution is required, manufacturers can benefit from Bonfiglioli's technical expertise. Our teams work closely with powertrain designers and component suppliers to develop innovative and efficient tailor-made solutions. Current emission regulations applied to the automotive industry have been extended to warehouse and material handling vehicles; over the medium term, the concepts and technologies involved are likely to be scaled up to heavy duty applications. We have a dedicated solution for all the heavy duty vehicles manufacturers that are eagerly seeking improvements in efficiency to increase productivity and reduce the total cost of ownership for end-users. We are the right partner to support your transition to electric transport, thanks to years of experience in powertrain design for light and medium duty vehicles.



# Milestones

---

## A LONG HISTORY OF POWER TRANSMISSION AND ELECTRIC SOLUTIONS

**1956**

Clementino founded Costruzioni  
Meccaniche Bonfiglioli

**1975**

Acquisition of Bonfiglioli Trasmital

**1976**

First electric transmission for class  
III material handling

First electric transmission for class  
I material handling

**2009**

Establishment of the Bonfiglioli Electromobility  
Competence Center

**2018**

Expansion of Bonfiglioli's Italian e-mobility plant

Capacity increased by an additional  
high automation assembly line  
applying industry 4.0 concepts to  
the mass production of dual motor  
drive axles for forklifts

## 1981

First hydrostatic planetary transmission for class IV material handling



## 1992

First electric transmission for class II material handling



## 2004

Development of the forklift hydraulic steering system for material handling



## 2012

Dedicated assembly line for the mass production of single motor drive axles for material handling class I



## 2014

Development of a complete portfolio of class II/III material handling solutions



## 2016

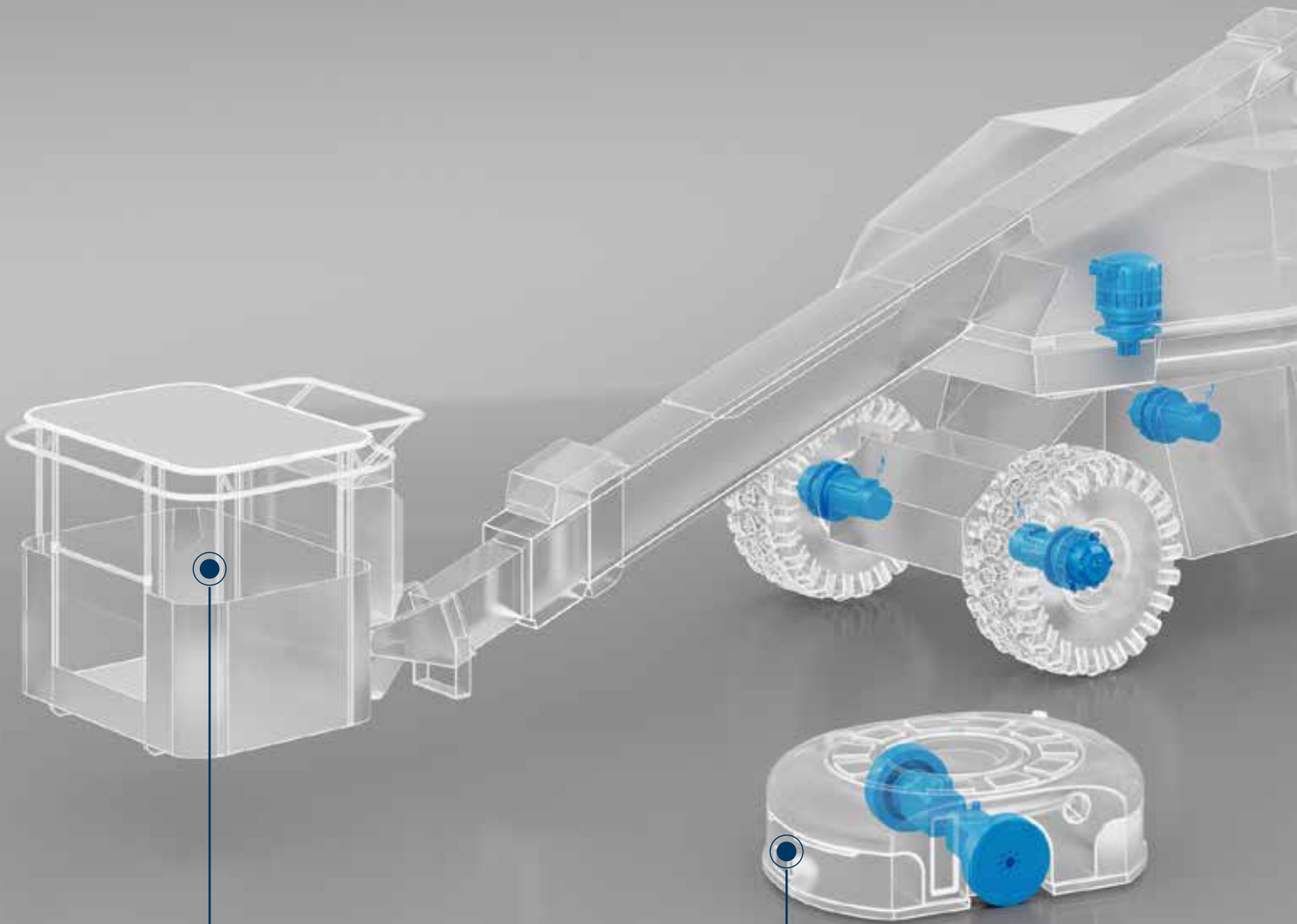
200,000 forklifts driven by Bonfiglioli products. Partner of the world's top 3 OEMs



## 2020

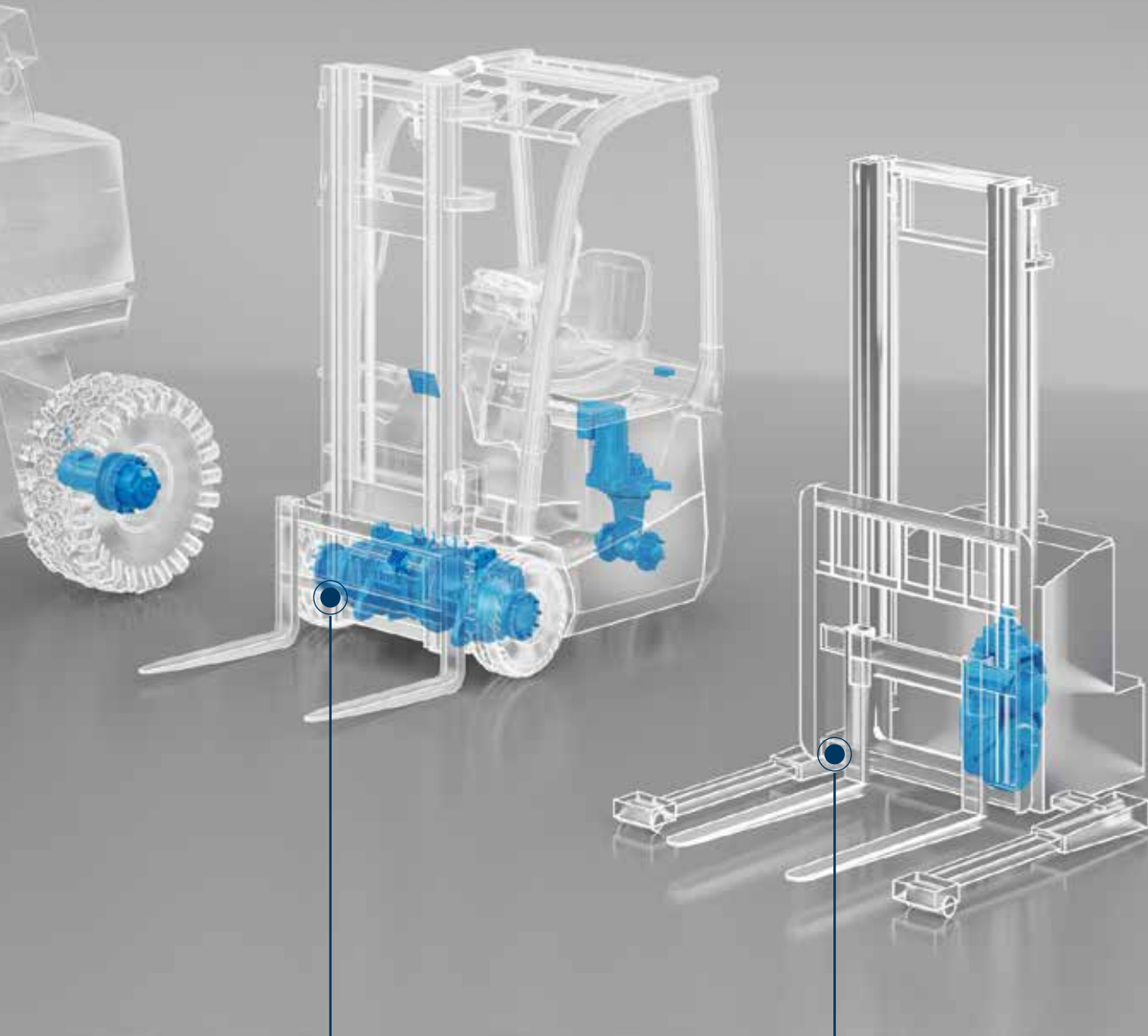
Ramped-up production of differential drives used in commercial vehicles





**4** ACCESS PLATFORMS

**3** AUTOMATED GUIDED  
VEHICLES



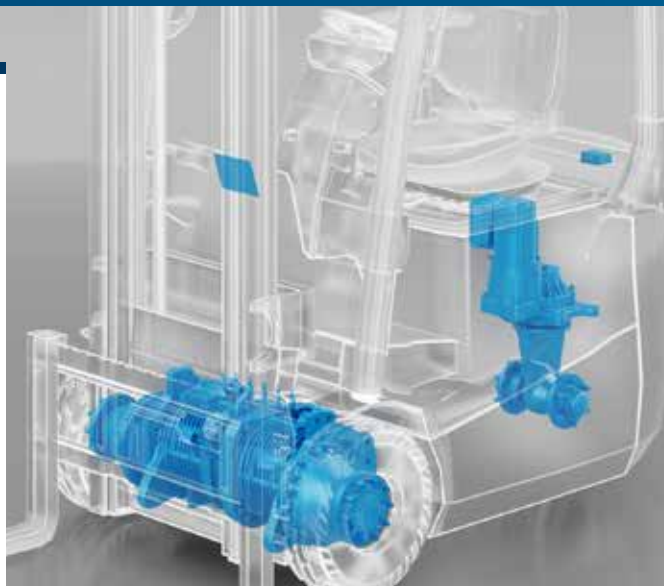
**1** FORKLIFTS

**2** WAREHOUSE TRUCKS

1

## FORKLIFTS

Bonfiglioli supplies high-efficiency, low-noise planetary axles and drives with integrated high performance electric motors and low maintenance braking systems for Class 1 material handling vehicles. Typical applications include 3- and 4-wheel counterbalance lift trucks and ground support equipment. Bonfiglioli electric powertrains are fully tested in the factory and guarantee low energy consumption. This, in turn, means longer battery life, extended servicing intervals and lower costs of ownership.



### 600F Series Traction Systems

- Maximum efficiency
- Minimum noise
- Complete solution
- Fully tested



### 600W0C Series Idle Steering System

- 360° steering
- Complete solution
- Fully tested



### DISPLAY Customized solution

- High integration level
- High-end & high-speed design
- All black IPS display
- Polyphonic grade alarms
- Double high-speed (and full management) of can interface
- IP65 grade protection
- Capacitive touch button
- Light sensor for backlight



### DC/DC CONVERTER Customized solution

- Extended input voltage
- Back and forward topology
- Multiple output power version with the same enclosure
- Isolated and not isolated topology
- Thermal protection
- Output protection
- Balancing power between 2 DC/DC
- LIN interface
- Input enable
- Up to 60°C ambient temperature
- IP65 grade protection

BENEFITS

FEATURES

- Dual stage gearbox
- Optimized gear design
- Service brake
- Parking brake
- Integrated, customized mast support
- Integrated AC traction motor protection rating up to IP54
- Integrated, high accuracy, silicon-based temperature sensor
- Integrated, high resolution hall effect speed sensor

TECHNICAL DATA

#### Axle torque (Nm)

601 F	3,000
602 F	5,500
603 F	7,000
605 W	15,000
606 W	20,000
610 W	50,000

#### Lift capacity (kg)

601 F	2,500
602 F	3,500
603 F	5,000
605 W	7,000
606 W	12,000
610 W	20,000

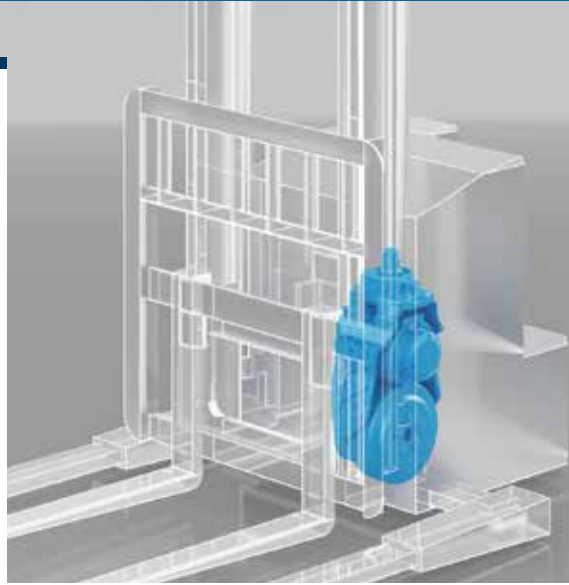
#### Lift capacity (kg)

601 W0C	2,000
602 W0C	3,000
603 W0C	3,500

## 2

### WAREHOUSE TRUCKS

Bonfiglioli EL steerable drives are a perfect match for the most demanding warehousing applications (Class 2 and Class 3). Warehousing trucks require high maneuverability in tight spaces, provided by drives like those in the EL series, with the smallest operating radius in vertical arrangements.



### EL Series Steerable Drives

#### BENEFITS

- Maximum efficiency
- Minimum noise
- Complete solution
- Fully tested

#### FEATURES

- Two-stage helical & bevel gearboxes
- Manual steering and power steering versions
- Optimized gear design for efficiency and noise
- Integrated low-voltage electric motor
- Integrated parking brake
- Complete system with tires

#### TECHNICAL DATA

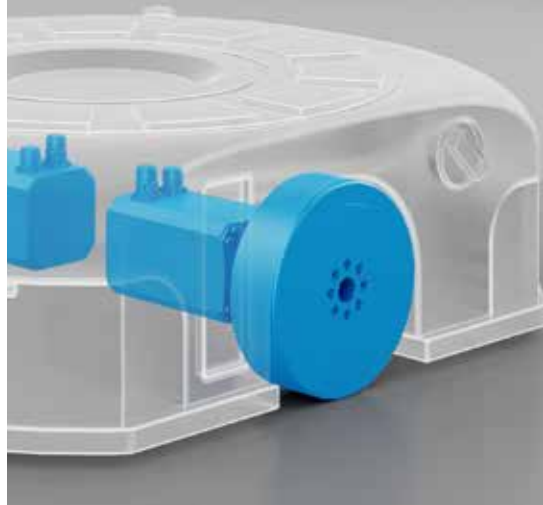
	Torque (Nm)	Max wheel load (kg)
EL100	450	1,200
EL09	500	1,200
EL96	500	1,500
EL10	900	1,500
EL300	1,100	2,200
EL92	1,500	3,000
EL93	1,500	3,000
EL94	1,500	3,000
EL14	1,900	3,400
EL16	2,500	4,000



## 3

### AUTOMATED GUIDED VEHICLES

Automatic Guided Vehicles (AGVs) and Autonomous Mobile Robots (AMRs) are a range of driverless transportation robots that can autonomously transport materials through designated pickup and delivery routes within a facility. AGVs and AMRs are easy to integrate into existing processes, simplifying intralogistic flows and increasing automation levels. Due to this, a wide range of sectors are adopting these solutions.



#### BlueRoll Basic

TQW: the new Wheel-Mounted Gearbox Series

- Easy installation
- Heavy load capability
- Great reliability
- Reduced footprint



#### BlueRoll Advanced

Powerful and Compact Servo Gearmotors

- High energy efficiency
- Rigid and accurate
- High torque capability
- High flexibility



#### BlueRoll Compact

Extra Compact Servo Gearmotors

- Simplified AGV design
- Suitable for long operation times
- Top level configuration

#### BENEFITS

#### FEATURES

- Three gearmotor sizes, rated for loads up to: 360kg, 720kg and 1020kg
- Speed up to 2 m/s
- New wheel-mounted precision planetary gearbox: TQW
- Permanent magnet synchronous motors with premium efficiency
- Wide range of feedback systems, including safety encoders
- Compact, extensively customizable design

#### TECHNICAL DATA

	Torque (Nm)
TQW 060	30
TQW 070	65
TQW 090	155

## 4

### ACCESS PLATFORMS

#### Wheel drives

With a reliable series of products made for access platforms, Bonfiglioli gives machine builders the best possible choice of drive systems. The compact, silent, highly efficient and maintenance-free integrated drive motors are excellent with access platforms for indoor and outdoor use.

#### Slew drives

Bonfiglioli slew drives are the most effective solution for both hydraulic and electric access platforms.



**600WE Series**  
Wheel Drives



**700TE Series**  
Slew Drives

#### BENEFITS

- Compact dimensions
- Low noise
- High efficiency
- Maintenance-free motors

#### FEATURES

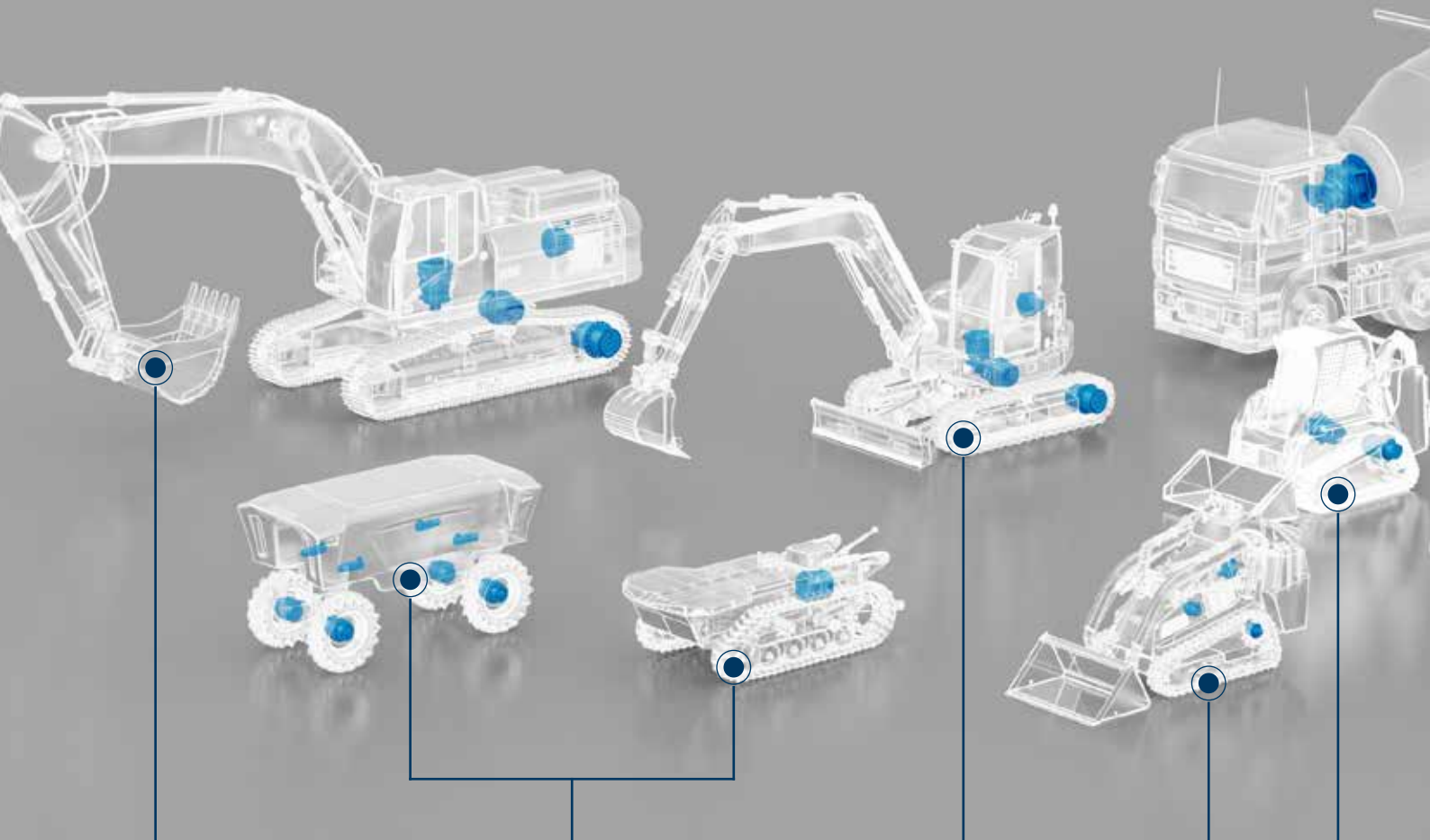
- Multistage planetary drive
- Optimized gear design for maximum efficiency and minimum noise
- Integrated, low voltage, 3 phase PM or induction motor
- Integrated, high accuracy, temperature sensor
- High resolution, hall effect speed sensor
- Motor protection degree up to IP67

- Compact
- High performance
- High torque in a limited space
- Reduced TCO
- Easy maintenance
- Low noise
- No polluting emissions

#### TECHNICAL DATA

	Torque (Nm)
600 WL	500
600 WE	900
601 RE	3,000
602 RE	3,500
602 WE	4,500
604 WE	7,000
605 WE	10,000

	Torque (Nm)
700 TE	750
701 TE	1,200
703 TE	2,500
705 TE	5,000



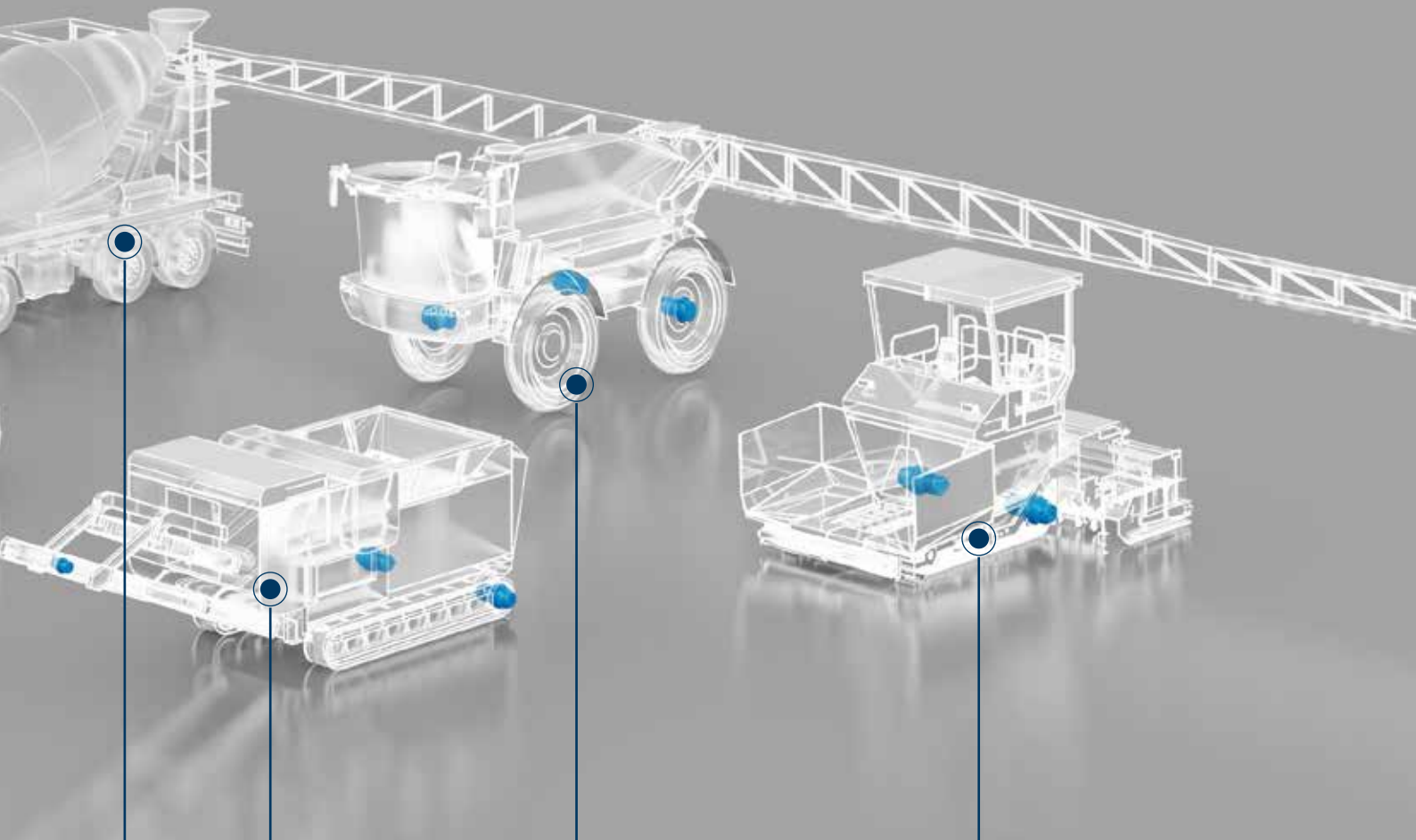
**2** EXCAVATORS

MINI EXCAVATORS **1**

MINI TRACK LOADERS **3**

COMPACT TRACK LOADERS **4**

**9** WHEELED & TRACKED AGRIROBOTS



**7** TRANSIT MIXER TRUCKS

**6** CRUSHERS & SCREENERS

**8** SPRAYERS

**5** PAVERS

1

## MINI EXCAVATORS

### Track, slew and pump drives

Thanks to a reliable series of products for 1 to 6 ton mini-excavators, Bonfiglioli gives machine builders the best possible choice of drive system. High performance, including high torque in a compact space, is one of our portfolio's key benefits. These solutions allow for smooth machine operation.



**700CE Series**  
Track Drives



**700TE Series**  
Slew Drives



**BPM MOTOR Series**  
Pump Drives

### BENEFITS

- Compact
- High performance
- High torque in a limited space
- Reduced TCO
- Easy maintenance
- Low noise
- No polluting emissions

- Compact
- High performance
- High torque in a limited space
- Reduced TCO
- Easy maintenance
- Low noise
- No polluting emissions

- Compact
- High performance
- High torque in a limited space
- Reduced TCO
- Easy maintenance
- Low noise
- No polluting emissions

### FEATURES

- Reduced axial length thanks to the PM e-motor
- Fully integrated design
- Integrated electromagnetic parking brake
- Integrated speed and temperature sensors
- High protection rating

- Fully integrated design
- Integrated electromagnetic brake
- Integrated speed and temperature sensors
- High protection rating

- Permanent magnet motors
- Suitable for 48-400 Vdc batteries
- Air cooled
- Aluminum housing
- Protection rating >IP65
- SAE flanges available

### TECHNICAL DATA

	Torque (Nm)
700 CE	1,200
700-2 CE	1,900
701 CE	2,500
702 CE	3,500
704 CE	5,000
705 CE	9,000

	Torque (Nm)
700 TE	750
701 TE	1,200
703 TE	2,500
705 TE	5,000

	Rated power (kW)
BPM 200-L1	5
BPM 200-L2	7.5
BPM 200-L3	10
BPM 200-L4	15

2

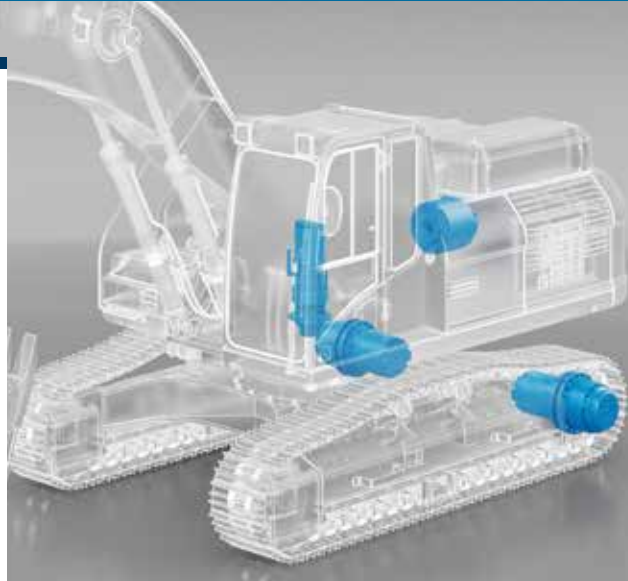
EXCAVATORS

Track drives

High performance, including high torque in a compact space, is one of our portfolio's key benefits. These solutions allow smooth machine operation.

Slew drives

Compact and efficient, Bonfiglioli slew drives for above 15 tons excavators ensure the best possible machine efficiency and easy maintenance



**700CE Series**  
Track Drives



**700TE Series**  
Slew Drives



**BPM MOTOR Series**  
Pump Drives

BENEFITS

- Compact
- High performance
- High torque in a limited space
- Reduced TCO
- Easy maintenance
- Low noise
- No polluting emissions

- Compact
- High performance
- High torque in a limited space
- Reduced TCO
- Easy maintenance
- Low noise
- No polluting emissions

- Compact
- High performance
- High torque in a limited space
- Reduced TCO
- Easy maintenance
- Low noise
- No polluting emissions

FEATURES

- Reduced axial length thanks to PM e-motor
- Fully integrated design
- Integrated electromagnetic parking brake
- Integrated speed and temperature sensors
- High protection rating

- Fully integrated design
- Integrated electromagnetic brake
- Integrated speed and temperature sensors
- High protection rating

- Permanent magnet motors
- Suitable for 400-800 Vdc batteries
- Liquid cooled
- Aluminum or cast iron housing
- Protection rating >IP65
- SAE flanges available

TECHNICAL DATA

	Torque (Nm)
705 CE	9,000
706 CE	18,000
707 CE	26,000
709 CE	30,000
710 CE	36,000

	Torque (Nm)
703 TE	2,500
704 TE	3,600
705 TE	5,000
706 TE	7,500
707 TE	9,000
709 TE	12,000
710 TE	18,000
711 TE	20,000

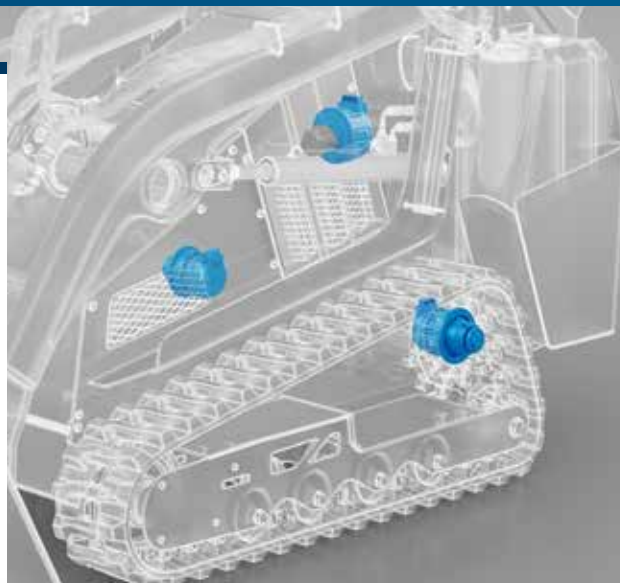
	Rated power (kW)
BPM 240-L4	35
BPM 240-L7	65
BPM 300-L1	100
BPM 300-L2	150



## 3

### MINI TRACK LOADERS

Bonfiglioli's electric version of the track drive combines the validated gearbox design with an air-cooled permanent magnet motor, offering a compact package that equals and even exceeds the propulsion and thrust performances of conventional machines, because power and torque are immediately available to the electric motor at every operating speed. Additionally, as the track gearboxes are electrically driven, the machine can work in sensitive areas where emissions and noise are a concern, even on night shifts. Lastly, electric motors are virtually maintenance-free, allowing for longer maintenance intervals.



**700CSE Series**  
Track Drives



**BPM MOTOR Series**  
Pump Drives

#### BENEFITS

- Compact
- High performance
- High torque in a limited space
- TCO reduction
- Easy maintenance
- Low noise
- No polluting emissions

- Compact
- High performance
- High torque in a limited space
- Reduced TCO
- Easy maintenance
- Low noise
- No polluting emissions

#### FEATURES

- Reduced axial length thanks to PM e-motor
- Fully integrated design
- Integrated electromagnetic parking brake
- Integrated speed and temperature sensors
- High protection rating
- Rotating flange design
- Duo cone seal option

- Permanent magnet motors
- Suitable for 48-400 Vdc batteries
- Air cooled
- Aluminum housing
- Protection rating >IP65
- SAE flanges available

#### TECHNICAL DATA

	Torque (Nm)
700 CSE	1,200
701 CSE	2,500

	Rated power (kW)
BPM 200-L1	5
BPM 200-L2	7.5
BPM 200-L3	10
BPM 200-L4	15

4

**COMPACT TRACK LOADERS**

Bonfiglioli's electric version of the track drive combines the validated gearbox design with a liquid-cooled permanent magnet motor, offering a compact package that equals and even exceeds the propulsion and thrust performances of conventional machines, because power and torque are immediately available to the electric motor at every operating speed.

Additionally, as the track gearboxes are electrically driven, the machine can work in sensitive areas where emissions and noise are a concern, even on night shifts. Lastly, electric motors are virtually maintenance-free, allowing for longer maintenance intervals.



**700CTE Series**  
Track Drives

**BENEFITS**

- Ability to work in sensitive areas without emissions
- Machine works without noise and less vibration
- Increased productivity
- Less maintenance
- Maneuverability
- Compact design

**FEATURES**

- Multistage planetary gearbox
- Rotating housing output
- Validated in the field
- Integrated parking brake
- Specific heavy duty seals
- Permanent magnet motors
- Suitable for 400-800 Vdc batteries
- Liquid cooled
- Protection rating >IP67
- Rated power up to 35 kW

**TECHNICAL DATA**

	Torque (Nm)		Rated power (kW)	
704 CTE		5,000	BPM 240-L4	35
705 CTE		6,500		





5

## PAVERS

### Wheel and track drives

Bonfiglioli produces a series of reliable drives to give paving machine builders a selection of quality drive systems. Our entire portfolio boasts top-level performances, including high torque in a compact space with limited axial dimensions. The electric version has fixed ratio or hydraulic-operated shift.



## 600WE Series Wheel Drives

### BENEFITS

#### Benefits for OEMs

- Ability to downsize and downspeed combustion engines
- Easy installation: electric solution dimensions comparable to standard hydrostatics
- Higher system reliability: fewer mechanical parts
- Virtually maintenance-free electric motors
- From wheel bolt to electric wire with only one supplier

#### Benefits for end users

- Reduced fuel consumption
- Increased productivity
- Better machine maneuverability
- The electric solution is cleaner: lower risk of oil spills

### FEATURES

- Multistage planetary gearbox
- Rotating housing output
- Validated in the field
- Low noise

- Permanent magnet motors
- Suitable for 400-800 Vdc batteries
- Liquid cooled
- Aluminum or cast iron housing
- Protection rating >IP65

### TECHNICAL DATA

	Torque (Nm)
605 W..V..	10,000
606 W..V	17,000
607 W..V	22,000
609 W..V	30,000
610 W..V	36,000
610 X	40,000
611 W..V	45,000
613 W	60,000

	Rated power (kW)
BPM 240-L4	35
BPM 240-L7	65
BPM 300-L1	100
BPM 300-L2	150



**700CE Series**  
Track Drives

**BENEFITS**

**Benefits for OEMs**

- Ability to downsize and downspeed combustion engines
- Easy installation: electric solution dimensions comparable to standard hydrostatics
- Higher system reliability: fewer mechanical parts
- Virtually maintenance-free electric motors
- From sprocket to electric wire with only one supplier

**Benefits for end-users**

- Reduced fuel consumption
- Increased productivity
- Better machine maneuverability
- The electric solution is cleaner: lower risk of oil spills

**FEATURES**

- Multistage planetary gearbox
- Rotating housing output
- Validated in the field
- Permanent magnet motors

- Suitable for 400-800 Vdc batteries
- Liquid cooled
- Aluminum or cast iron housing
- Protection rating >IP65

**TECHNICAL DATA**

	Torque (Nm)
707 CE	26,000
709 CE	30,000
710 CE	36,000
711 CE	45,000
713 CE	60,000

	Rated power (kW)
BPM 240-L4	35
BPM 240-L7	65
BPM 300-L1	100
BPM 300-L2	150

6

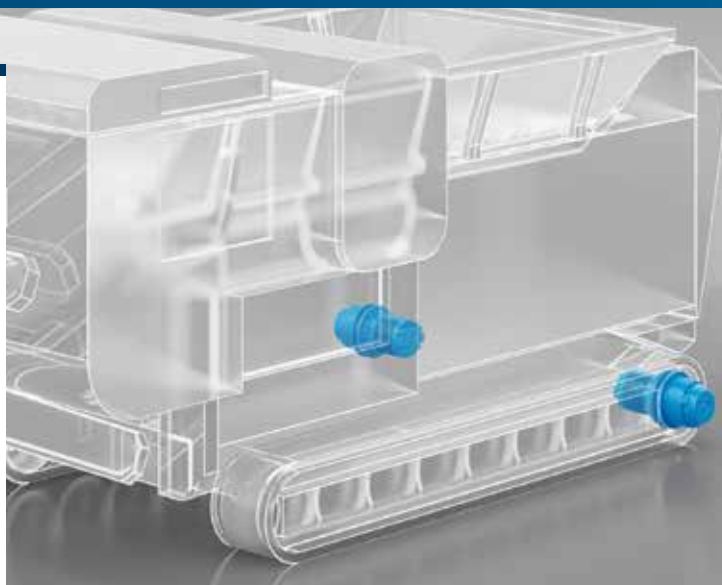
## CRUSHERS & SCREENERS

### Track drives

With a reliable series of products for crushing equipment, Bonfiglioli gives OEMs the best possible choice of track drive system. High performance, including high torque in a compact space, is one of our portfolio's key benefits. These solutions give the machine smooth operation and long product life.

### Conveyor drives

The performance of Bonfiglioli's drives guarantees low level of maintenance, helping our customers increase reliability and cut costs.



**700CE Series**  
Track Drives



**800 Series**  
Conveyor Drives

**BENEFITS**

#### Benefits for end-users

- Reduced fuel consumption
- Increased productivity
- Better machine maneuverability
- The electric solution is cleaner: lower risk of oil spills

#### Benefits for OEMs

- Ability to downsize and downspeed combustion engines
- Easy installation: electric solution dimensions comparable to standard hydrostatics
- Higher system reliability: fewer mechanical parts
- Virtually maintenance-free electric motors
- From sprocket to electric wire with only one supplier

- High torque capacity
- High load capacity

**FEATURES**

- Input speed up to 6,000 rpm
- Multistage planetary gearbox
- Rotating housing output
- Validated in the field
- Permanent magnet motors

- Suitable for 48-400 Vdc batteries
- Air cooled
- Aluminum housing
- Protection rating >IP65

- Rotating housing flange
- Rugged construction
- Optional freewheel for anti-runback device

**TECHNICAL DATA**

	Torque (Nm)
707 CE	26,000
709 CE	30,000
710 CE	36,000
711 CE	45,000
713 CE	60,000

	Rated power (kW)
BPM 200-L1	5
BPM 200-L2	7.5
BPM 200-L3	10
BPM 200-L4	15

	Torque (Nm)
805 W2	5,000
806 W2	10,000
810 F2	17,500
811 W2	27,000
813 W3	42,000



7

**TRANSIT MIXER TRUCKS**

Our solutions for concrete trucks offer precise rpm control, low noise levels and fuel consumption as well as maintenance and reduced fuel costs. Available in both electric and hydraulic versions, Bonfiglioli drum drives are designed around the needs of machine builders. Our electric version not only guarantees greater energy efficiency and reduced fuel consumption, but also cuts cement mixer truck operating costs.



**500 Series**  
Drum Drives

**BENEFITS**

- Enhanced operational reliability
- Reduced maintenance costs
- Increased energy efficiency and low fuel consumption
- Low operating noise levels
- Accurate rotation speed control
- High functionality in the event of failure, thanks to a second backup DC motor

**FEATURES**

- **Gear ratios**  
Main: 1:220  
Emergency: 1:2200
- **Input speed**  
Main: 3500 rpm  
Emergency: 2000 rpm
- **Motors**  
Main: Induction AC  
Emergency: PM DC motor

**TECHNICAL DATA**

	Torque (Nm)	
575		50,000
577		60,000
580		75,000





8

## SPRAYERS

With a series of reliable products for wheeled sprayers, Bonfiglioli offers machine builders a range of excellent drive systems.

Our portfolio guarantees performance, including high torque in a compact space with limited axial dimensions. The electric version includes a maintenance-free compact electric motor, which offers comparable dimensions to the hydraulic one.



## 600WE Series Wheel Drives

### BENEFITS

#### Benefits for OEMs

- Ability to downsize and downspeed combustion engines
- Easy installation: electric solution dimensions comparable to standard hydrostatics
- Higher system reliability: fewer mechanical parts
- Virtually maintenance-free electric motors
- From wheel bolt to electric wire with only one supplier

#### Benefits for end users

- Reduced fuel consumption
- Increased productivity
- Better machine maneuverability
- The electric solution is cleaner: lower risk of oil spills

### FEATURES

- Multistage planetary gearbox
- Rotating housing output
- Validated in the field
- Low noise

- Permanent magnet motors
- Suitable for 400-800 Vdc batteries
- Liquid cooled
- Aluminum or cast iron housing
- Protection rating >IP65

### TECHNICAL DATA

	Torque (Nm)
605 W..V..	10,000
606 W..V	17,000
607 W..V	22,000
609 W..V	30,000
610 W..V	36,000
610 X	40,000
611 W..V	45,000
613 W..V	60,000

	Rated power (kW)
BPM 240-L4	35
BPM 240-L7	65
BPM 300-L1	100
BPM 300-L2	150





## 600WE Series Wheel Drives



## MP + BMD MOTOR Series Steering Drives

### BENEFITS

- Compact dimensions
- Low noise
- High efficiency
- Maintenance free motors

- Compact
- High performance
- High torque in a limited space
- Reduced TCO
- Easy maintenance
- Low noise
- No polluting emissions

### FEATURES

- Multistage planetary drive
- Optimized gear design for maximum efficiency and minimum noise
- Integrated, low voltage, 3 phase PM or induction motor
- Integrated, high accuracy, temperature sensor
- High resolution, hall effect speed sensor
- Motor protection rating degree up to IP67

- Permanent magnet motors
- Suitable for 48-400 Vdc batteries
- Air cooled
- Aluminum housing
- Protection rating >IP65
- Precision steering thanks to low backlash

### TECHNICAL DATA

	Torque (Nm)
600 WL	500
600 WE	900
601 RE	3,000
602 RE	3,500
602 WE	4,500
604 WE	7,000
605 WE	10,000

	Torque (Nm)		Torque (Nm)
BMD 65	0,85	BMD 118	5,6
BMD 65	1,7	BMD 118	10,2
BMD 65	2,2	BMD 118	14
BMD 82	3,2	BMD 145	16,8
BMD 82	4,4	BMD 145	22
BMD 102	4,0	BMD 170	34
BMD 102	7,2	BMD 170	45
BMD 102	9,6		

9

**WHEELED & TRACKED AGRIROBOTS**

With a series of reliable products for wheeled AGV Robot, Bonfiglioli offers machine builders a range of excellent drive systems.

Bonfiglioli portfolio guarantees performances including high torque in a compact space with limited axial dimensions. The electric drives includes a maintenance-free compact electric motor, which offers comparable dimensions to the hydraulic one.



**700CE Series**  
Track Drives



**BPM MOTOR Series**  
Pump Drives

**BENEFITS**

- Compact
- High performance
- High torque in a limited space
- Reduced TCO
- Easy maintenance
- Low noise
- No polluting emissions

- Compact
- High performance
- High torque in a limited space
- Reduced TCO
- Easy maintenance
- Low noise
- No polluting emissions

**FEATURES**

- Reduced axial length thanks to PM e-motor
- Fully integrated design
- Integrated electromagnetic parking brake
- Integrated speed and temperature sensors
- High protection rating

- Permanent magnet motors
- Suitable for 48-400 Vdc batteries
- Air cooled
- Aluminum housing
- Protection rating >IP65
- SAE flanges available

**TECHNICAL DATA**

	Torque (Nm)
700 CE	1,200
700-2 CE	1,900
701 CE	2,500
702 CE	3,500
704 CE	5,000
705 CE	9,000

	Rated power (kW)
BPM 200-L1	5
BPM 200-L2	7,5
BPM 200-L3	10
BPM 200-L4	15

# R&D Capacity

DESIGN SIMULATION



TESTING  
LABORATORIES



CO-ENGINEERING



The R&D department at Bonfiglioli develops cutting-edge solutions that integrate the most advanced mechanical, electrical, electronic and hydraulic technologies, responding to the most complex application challenges. **Each R&D center focuses on dedicated product lines, ensuring specialist know-how and tailor-made innovation.**

## R&D CENTERS WORLDWIDE



### ITALY

Bologna  
Rovereto  
Forlì



### GERMANY

Hattingen  
Krefeld



### INDIA

Chennai



### CHINA

Shanghai



# Production: the heart of our company

OUR PRODUCTION SITES COMBINE INNOVATION AND PRECISION, REDEFINING THE CONCEPT OF OPERATIONAL EXCELLENCE.



With a fleet of 200 collaborative, high-capacity robots joining our AGVs/AMRs, we have built a seamlessly integrated **automated production ecosystem**.

We bridge the gap between production and IT infrastructure thanks to end-to-end digital integration, ensuring real-time monitoring and data-driven optimization.



From smart picking in our **advanced warehouses** to dynamic shipping, we guarantee agile, reliable and fast global delivery.

# Our worldwide presence

Thanks to an international network of closely interconnected commercial and production sites, we can guarantee the same high standards of Bonfiglioli quality anywhere at any given time. We know that our direct presence in local markets is the key to long-lasting success, so our family includes 17 production sites, 23 commercial sites and more than 550 distributors around the world.

**Our organization is always close by, offering complete and efficient solutions and supporting our customers with dedicated services, co-engineering and after-sales assistance.**

17  PRODUCTION SITES

23  COMMERCIAL SITES

80  COUNTRIES

550  DISTRIBUTORS

~5,000  PEOPLE

# Bonfiglioli global locations

## AUSTRALIA

**Bonfiglioli Transmission (Aust.) Pty Ltd**  
Plumpton NSW



## BRAZIL

**Bonfiglioli Redutores do Brasil Ltda**  
São Bernardo do Campo - São Paulo



## CHINA

**Bonfiglioli Drives (Shanghai) Co. Ltd.**  
Shanghai



**Selcom Electronics (Shanghai) Co., Ltd**

Shanghai



Shanghai



## FRANCE

**Bonfiglioli Transmission S.A.S.**

Marly la Ville



## GERMANY

**Bonfiglioli Deutschland GmbH**

Neuss



**Bonfiglioli Deutschland GmbH**

Krefeld



**O&K Antriebstechnik GmbH**

Hattingen



## INDIA

**Bonfiglioli Transmission Ltd.**

**Mobility & Wind Industries**

Thirumudivakkam

Kancheepuram - Tamil Nadu



**Industry & Automation Solutions**

Mannur Village, Sriperumbudur Taluk

Kancheepuram - Tamil Nadu



**Industry & Automation Solutions**

Pune - Maharashtra



## ITALY

**Bonfiglioli Riduttori S.p.A.**

**Industry & Automation Solutions**

Calderara di Reno (BO)



**Industry & Automation Solutions**

Carpiano



**Mobility & Wind Industries**

Forlì



**Industry & Automation Solutions**

Rovereto



**Selcom Group S.p.A.**

Castel Maggiore (BO)



Castel Maggiore (BO)



Cadriano (BO)



## NEW ZEALAND

**Bonfiglioli Transmission (Aust.) Pty Ltd**

Auckland - Ellerslie



## SINGAPORE

**Bonfiglioli South East Asia Pte Ltd**

Singapore



## SLOVAKIA

**Bonfiglioli Slovakia s.r.o.**

Považská Bystrica



## SOUTH AFRICA

**Bonfiglioli South Africa Pty Ltd.**

Johannesburg



## SPAIN

**Tecnotrans Bonfiglioli S.A**

Castellbisbal - Barcelona



## TURKEY

**Bonfiglioli Türkiye Jsc**

Çiğli - Izmir



## UNITED KINGDOM

**Bonfiglioli UK Ltd.**

Warrington - Cheshire

Tel. +44 1925 852667



## USA

**Bonfiglioli USA Inc.**

Hebron - Kentucky



## VIETNAM

**Bonfiglioli Vietnam Co. Ltd.**

Ben Cat city, Binh Duong province





We have a relentless commitment to excellence, innovation & sustainability. Our team creates, distributes and services world-class power transmission & drive solutions to keep the world in motion.

#### **HEADQUARTERS**

##### **Bonfiglioli S.p.A.**

Via Cav. Clementino Bonfiglioli, 1  
40012 Calderara di Reno - Bologna (Italy)  
Tel. +39 051 6473111

