

BONFIGLIOLI SOLUTIONS FOR MARINE & OFFSHORE

**Winch drives
800 series**

Bonfiglioli, your global trusted partner for Marine & Offshore applications



**ONE OF THE LARGEST PRODUCT
RANGE IN THE MARKET**



GLOBAL PLAYER
Worldwide Sales & Service



CO-ENGINEERING
tailor made solutions



YEARS
In Marine & Offshore sector



Winch drives

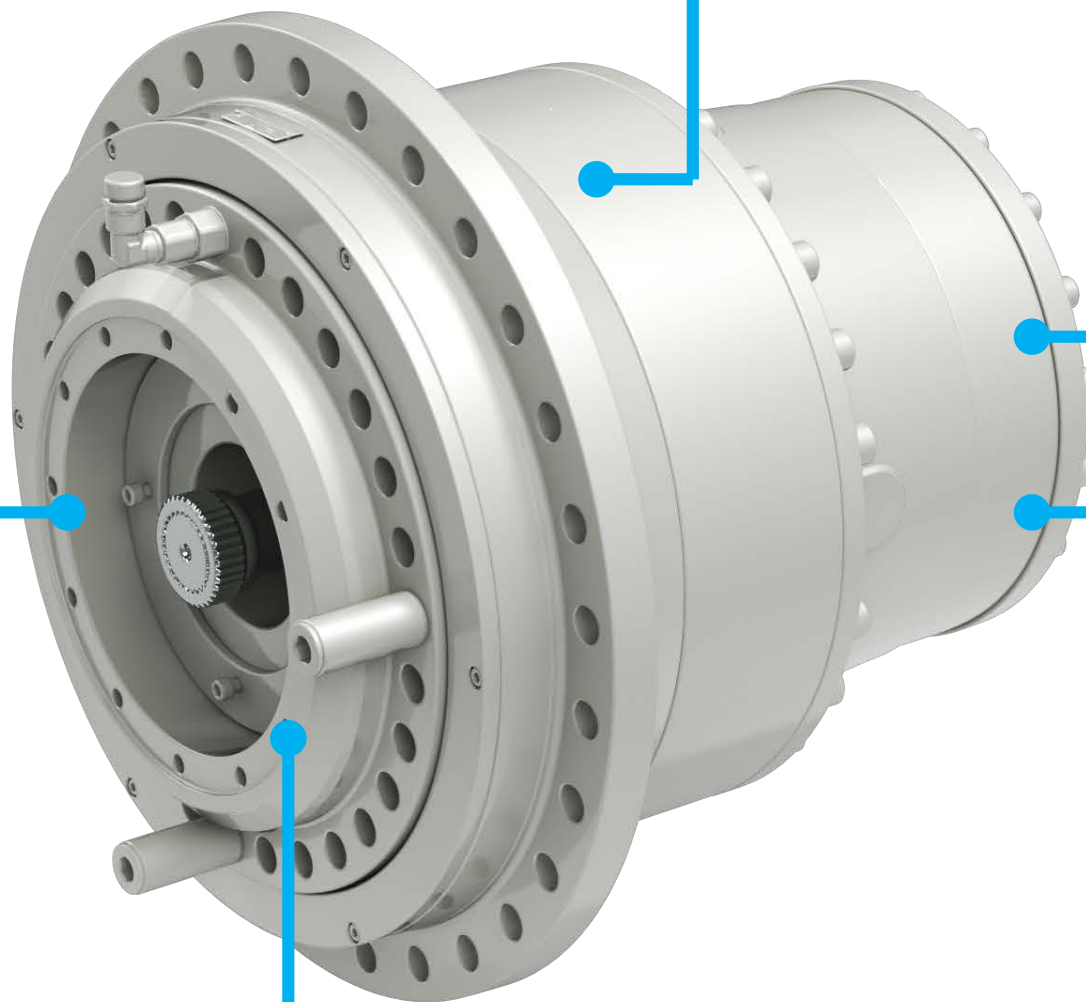
800 series



Easy O&M

**Modular &
Versatile**

Adaptable



Performant

Certified

Performant

High performance
solutions

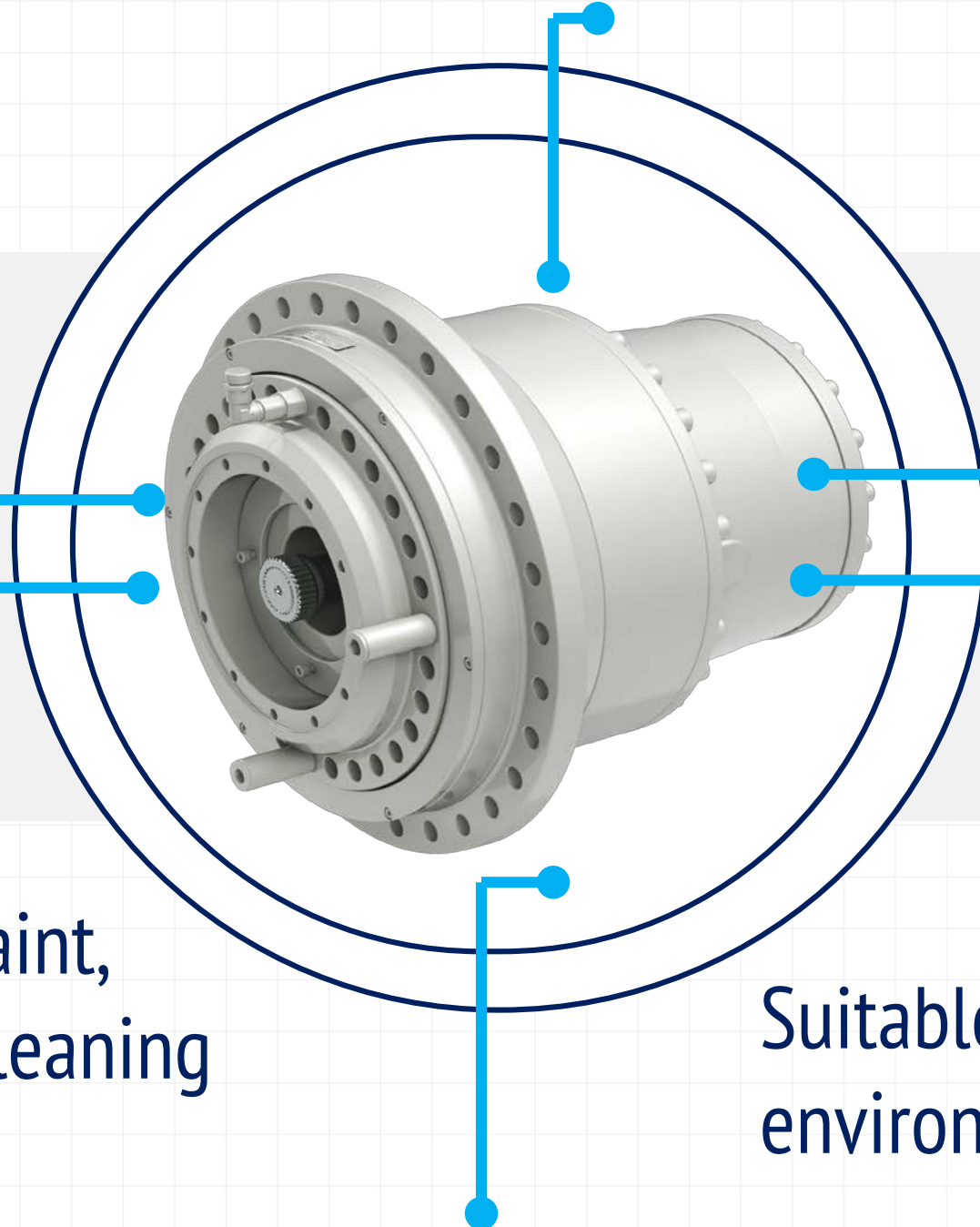
5 sizes Up to 240 kNm
FEM M5L2T5

High input speeds

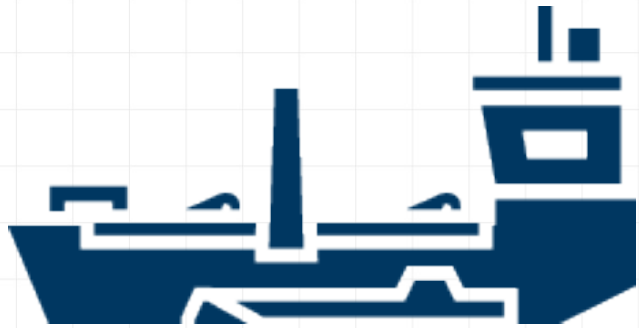
Marine-resistant paint,
suitable for blast cleaning

Suitable for critically **harsh**
environmental **conditions**

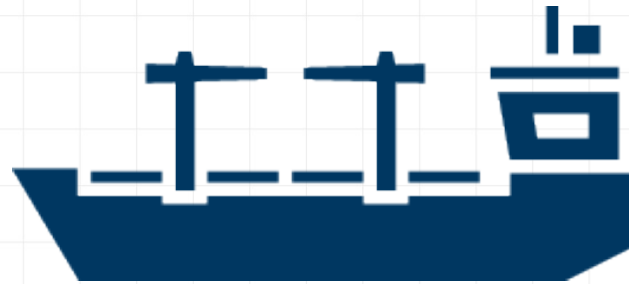
Low temperature resistant (-40°),
option for arctic sealings



Adaptable



DREDGING
VESSELS



MERCHANT
VESSELS



OFFSHORE
CONSTRUCTION
VESSELS

OFFSHORE
PLATFORMS



PIPELAYERS &
CABLE LAYERS

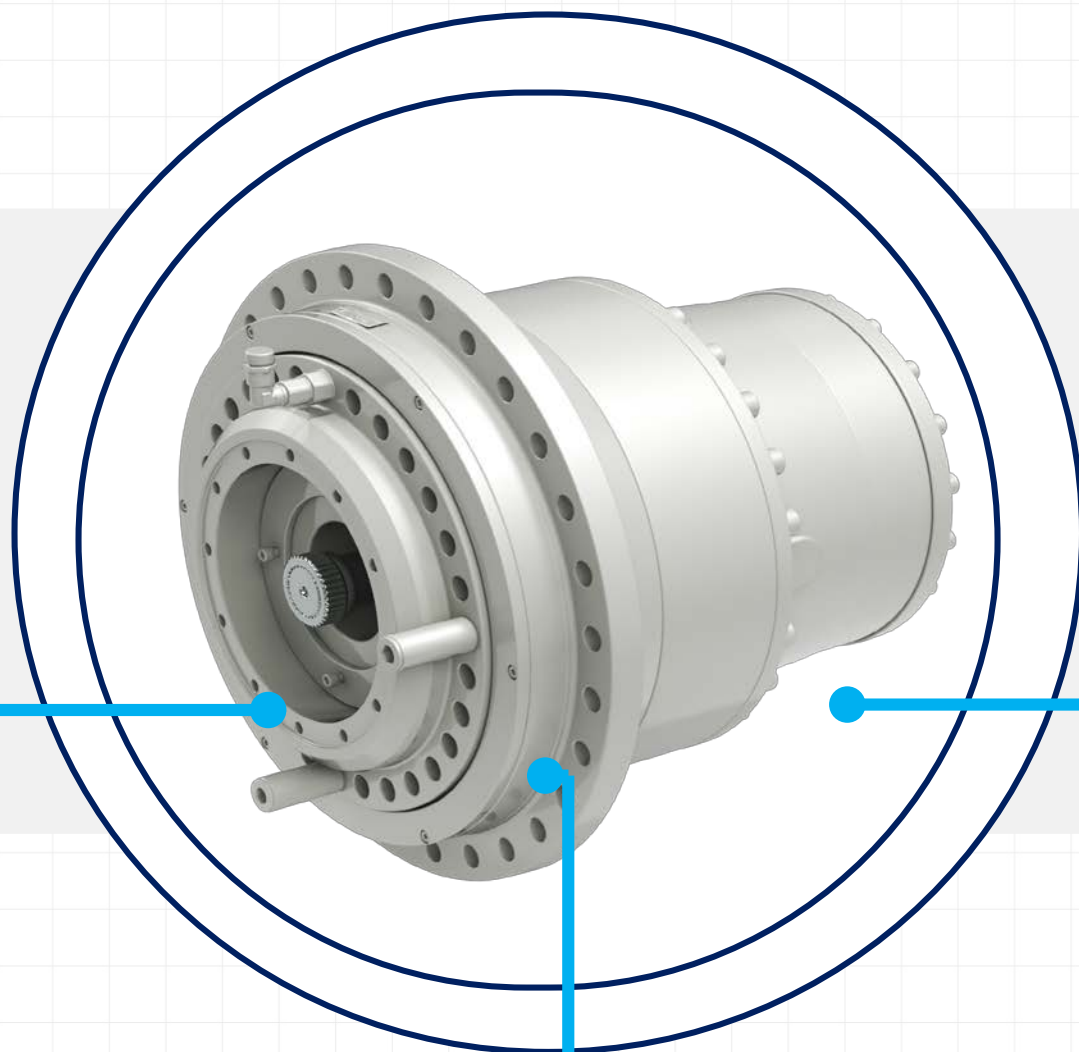


WORK &
TUG BOAT

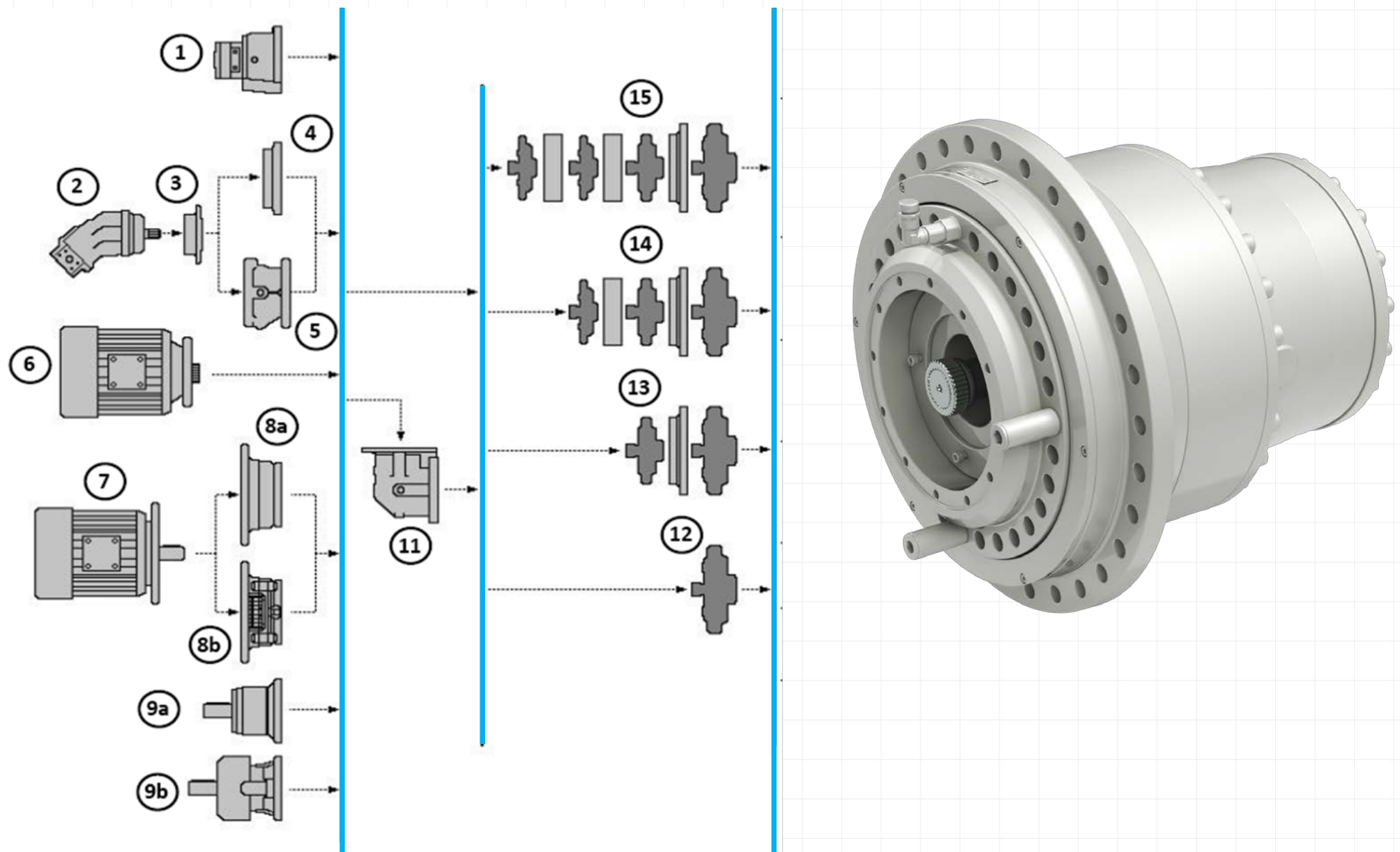


Certified

Quality &
Reliability



Modular

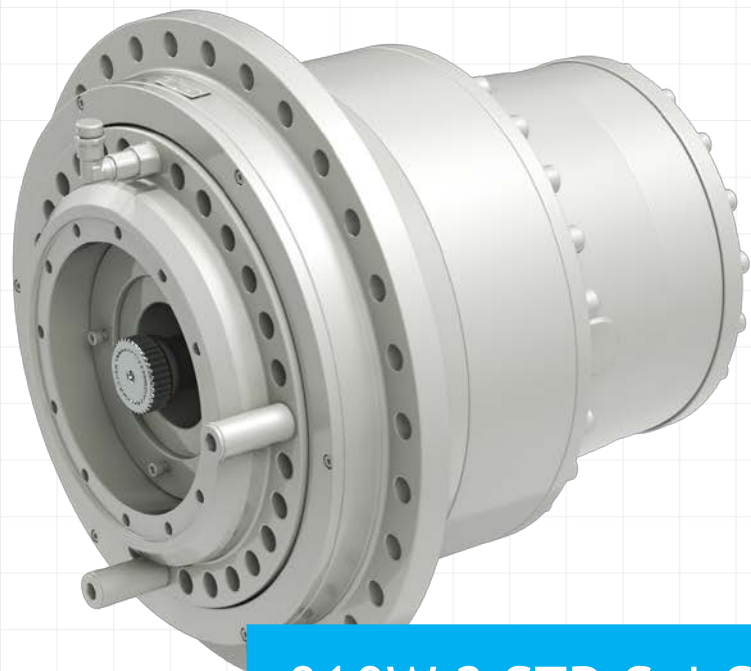


Thanks to a certified modularity architecture



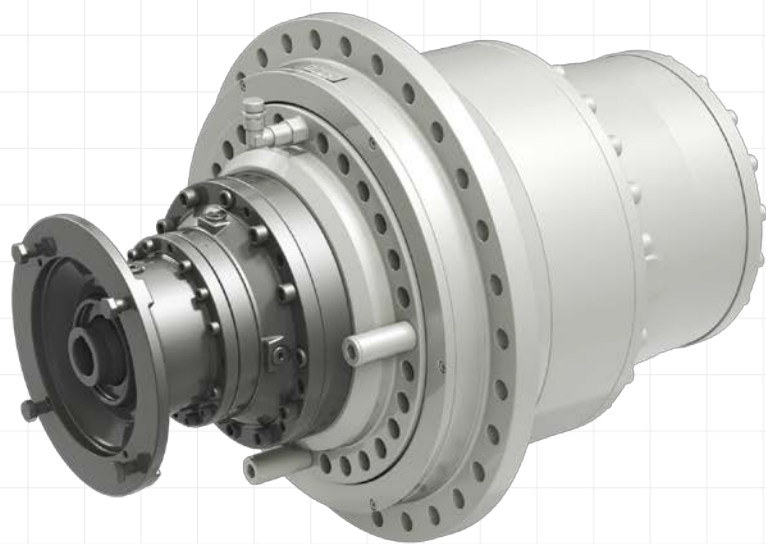
Time to market reduced to the minimum

Versatile

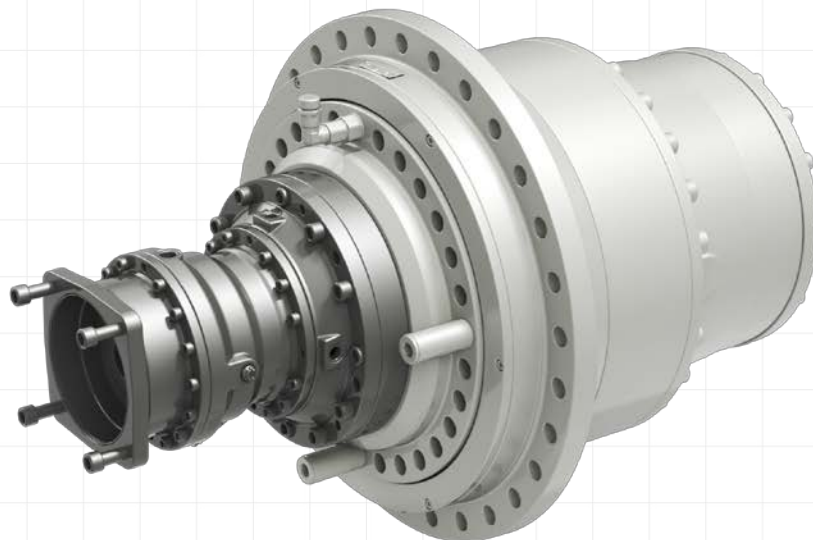


818W 2 STD SubGroup

- Additional standard stages/option
- Motor flange
- Hyd brake
- Hyd motor adaptor
- Right angle stage



818W 4 STADI +
PAM IEC 180



818W 3 STADI +
FR 6" e PAM A2FE

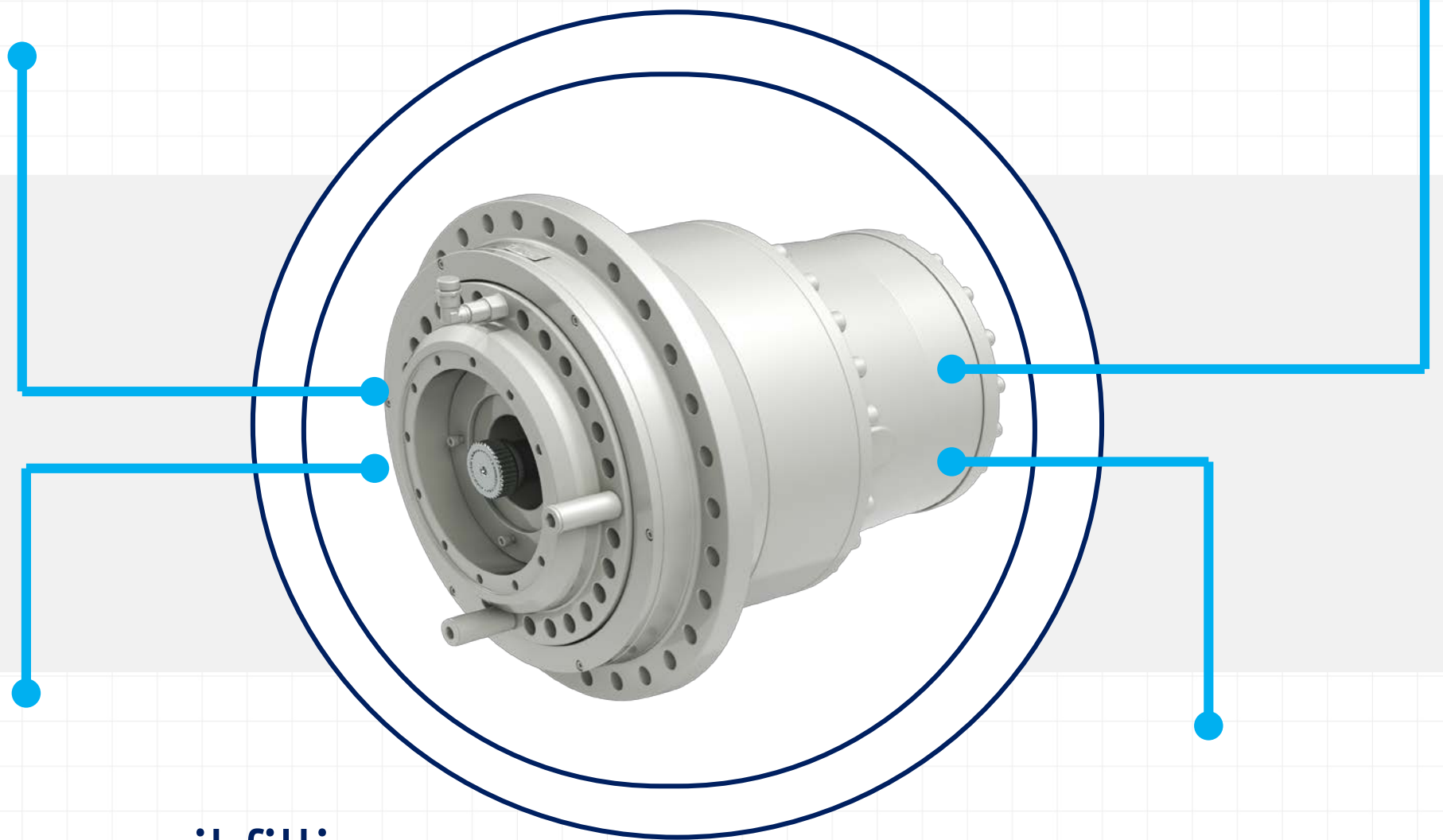


818W 4 R STD

Easy O&M

Easy access to brake

Ready made brake
replacement kit



Easy access oil filling,
draining plugs, oil level
pipe/indicator

Easy and fast assembly
of gearboxes into drum

**Bonfiglioli is your
global trusted partner
for Marine & Offshore
applications**